



Surrey Central Business Park

Proudly owned and
managed by:



BUILDING 1

7445 | 132ND STREET
SURREY, BC

Josh Sookero*, Principal

604 647 5091

josh.sookero@avisonyoung.com

*Josh Sookero Personal Real Estate Corporation

Nicolas Bilodeau, Senior Vice President

604 647 1336

nicolas.bilodeau@avisonyoung.com

**AVISON
YOUNG**



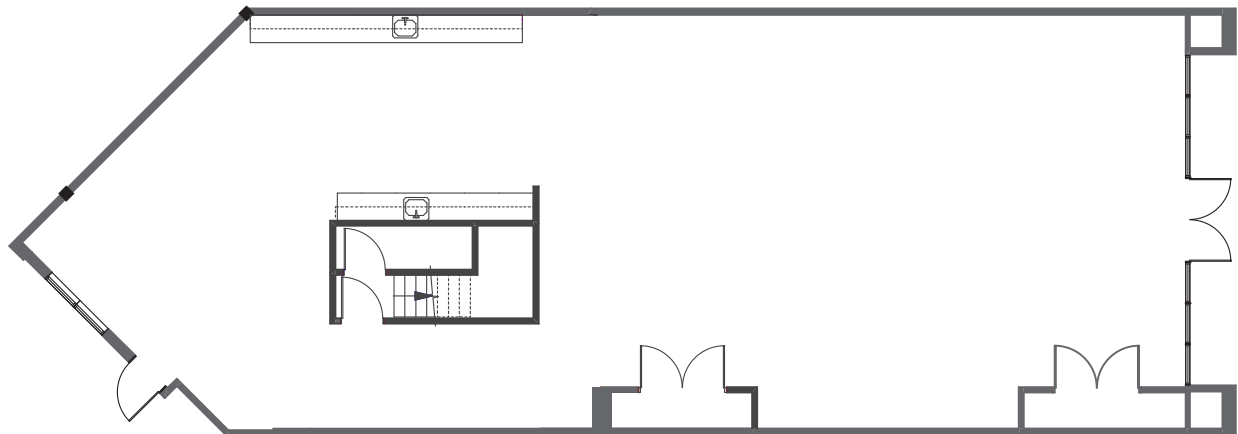
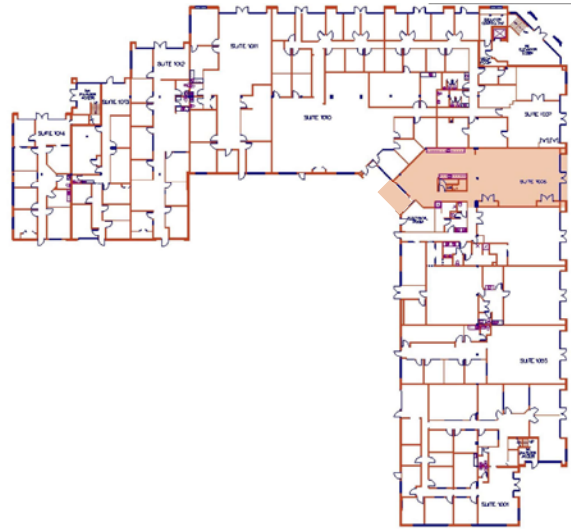
BUILDING 1

7445

132ND STREET
SURREY, BC

SUITE	AREA	AVAILABLE	OPERATION COSTS & TAXES (EST.)	CONDITION OF IMPROVEMENTS
-------	------	-----------	--------------------------------	---------------------------

1006	3,036 sf	Immediately	\$13.25 psf	Warm shell space with high ceilings
------	----------	-------------	-------------	-------------------------------------



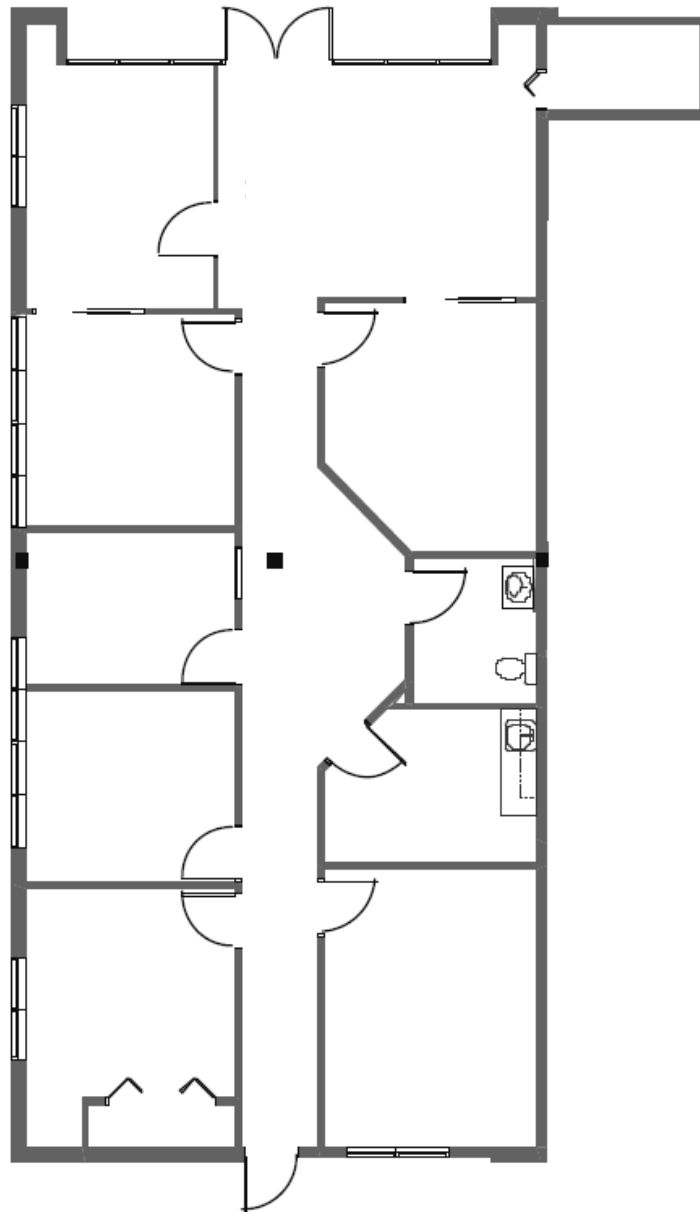


BUILDING 1

7445

132ND STREET
SURREY, BC

SUITE	AREA	AVAILABLE	OPERATION COSTS & TAXES (EST.)	CONDITION OF IMPROVEMENTS
1014	2,253sf	Immediately	\$13.25 psf	



© 2024 Avison Young.

Information contained herein was obtained from sources deemed reliable and, while thought to be correct, have not been verified. Avison Young does not guarantee the accuracy or completeness of the information presented, nor assumes any responsibility or liability for any errors or omissions therein.

Proudly owned and managed by:



**AVISON
YOUNG**



BUILDING 1

7445 | 132ND STREET
SURREY, BC

SUITE	AREA	AVAILABLE	OPERATION COSTS & TAXES (EST.)	CONDITION OF IMPROVEMENTS
-------	------	-----------	--------------------------------	---------------------------

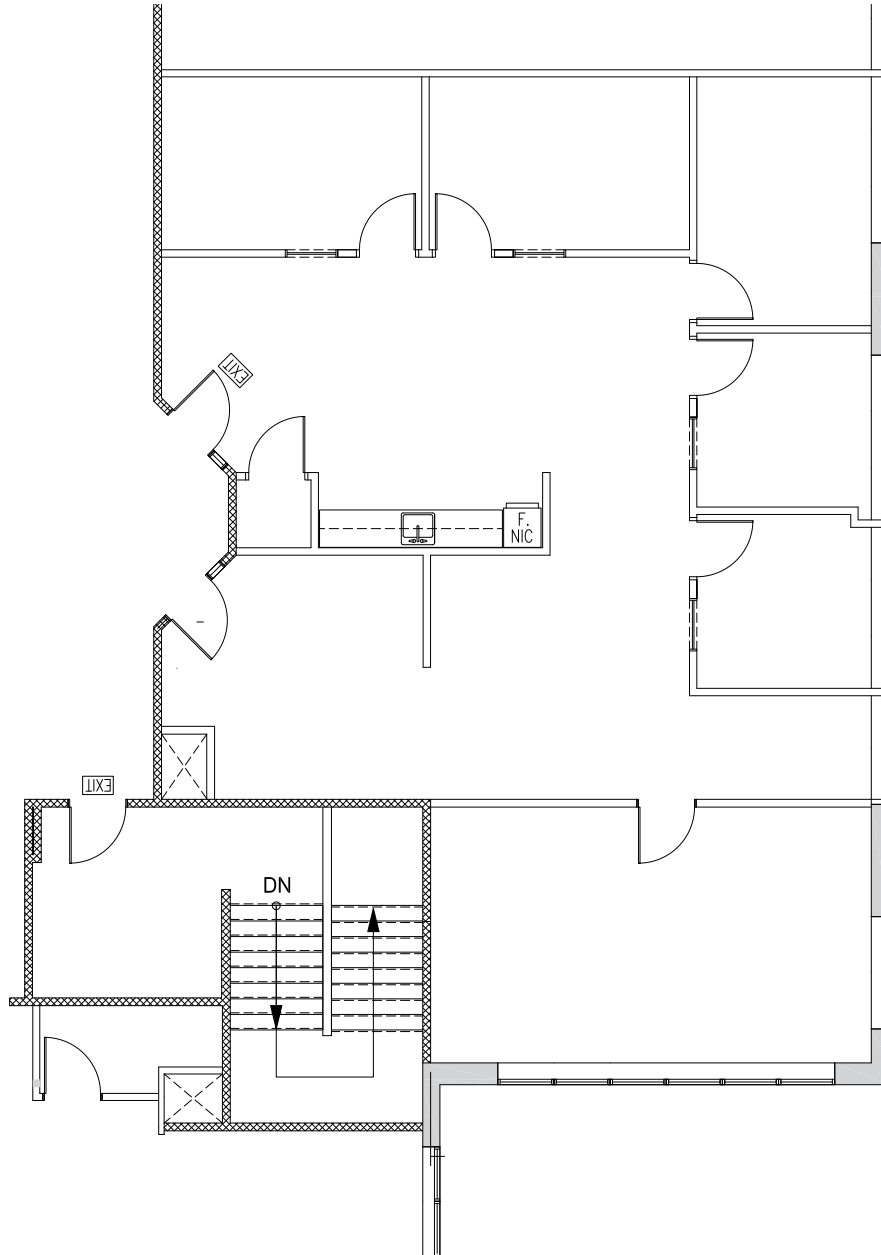
2005

2,124 sf

Immediately

\$16.33 psf

Large boardroom, five offices and kitchenette





BUILDING 1

7445

132ND STREET
SURREY, BC

SUITE	AREA	AVAILABLE	OPERATION COSTS & TAXES (EST.)	CONDITION OF IMPROVEMENTS
-------	------	-----------	--------------------------------	---------------------------

2009	1,438 sf	Immediately	\$16.33 psf	
------	----------	-------------	-------------	--

