



CUSHMAN &  
WAKEFIELD

FOR LEASE

5900 No. 3 ROAD  
RICHMOND, BC



**Frances Wu**

Senior Associate

604 639 9356

[frances.wu@cushwake.com](mailto:frances.wu@cushwake.com)

# FOR LEASE

## 5900 No. 3 ROAD RICHMOND, BC

### THE OPPORTUNITY

Office space for lease in Richmond City Centre in a well-managed building! The building is located at the corner of Westminster Highway and No. 3 Road, with access from both of these major roads. In addition, the building offers excellent access by transit as it is located half a block to Brighthouse skytrain station and the bus loop at Brighthouse station. Need to visit City Hall frequently? Richmond City Hall is within a 10 minute walk. Frequent flyer? Airport is a 10 minute drive away or five stops on the Skytrain.

### FEATURES

- Well-managed concrete building
- Located in the core of Richmond's city centre
- Excellent amenities within a 10 minute stroll: Richmond Centre, Lansdowne Centre, plenty of restaurants, cafes and services nearby.

### AVAILABLE AREA

**FULLY LEASED**

### COMING SOON

Unit 430 - 1,093 sf

### ZONING

CDT1 - Downtown Commercial

### BASIC RENT

Contact Listing Agent

### ADDITIONAL RENT

\$20.16 (2021 estimate)

### PARKING

1:500 sf

### NOTE

Prospective Tenants cannot be engaged in the operation of a retail financial institution.



Richmond - Brighthouse

CANADA LINE STATION



RICHMOND  
CENTRE

HUDSON'S BAY

coastcapital SAVINGS

SPORTCHECK

ATMOSPHERE

SHOPPERS DRUG MART

Parking

Camlin  
TERRAZZO



No. 3 Road

Anderson Road 750m  
City Hall 750m  
Granville Avenue 800m

Saba Road 150m  
Cook Road 400m  
Park Road 600m

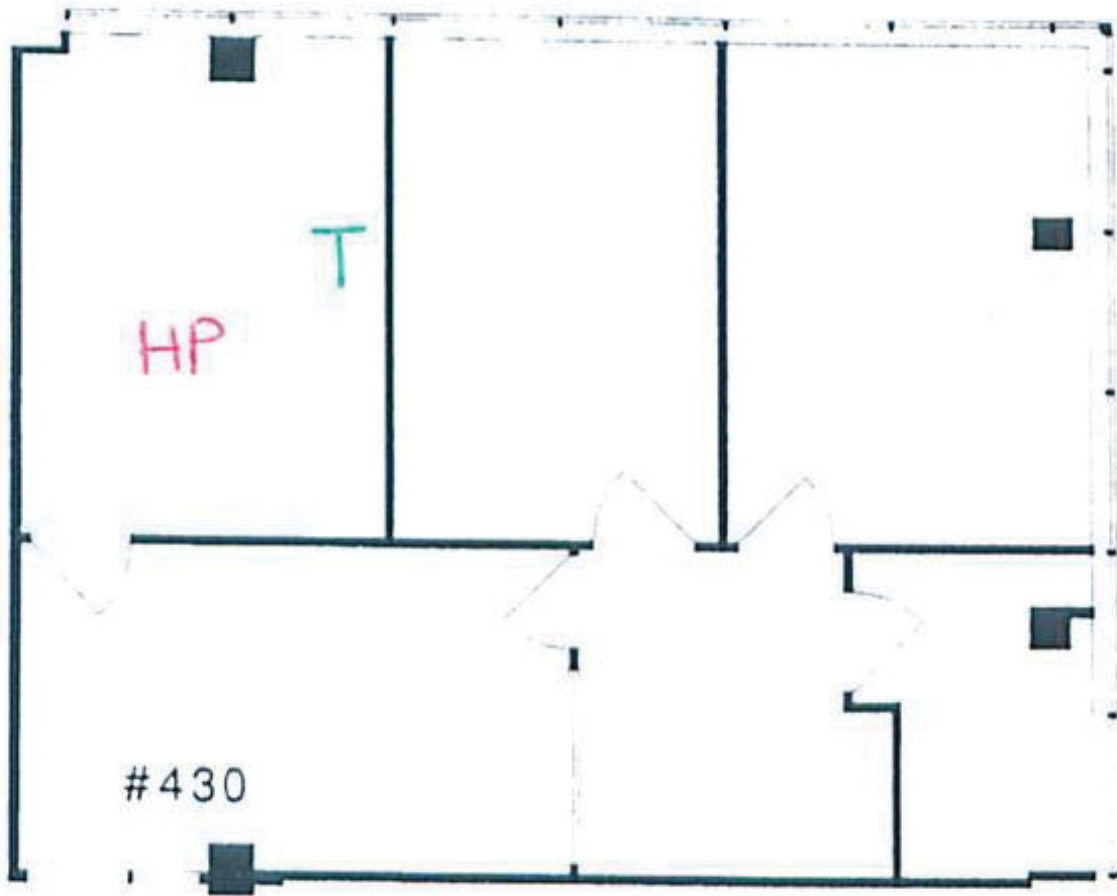
Atwood  
Lansdowne  
Aldersbridge  
Wilber Road

Westminster Hwy

Cooney Road 350m  
Garden City Road 850m

Atwood Road  
Lansdowne Road  
Aldersbridge Way  
250m  
600m  
800m

COMING SOON - UNIT 430



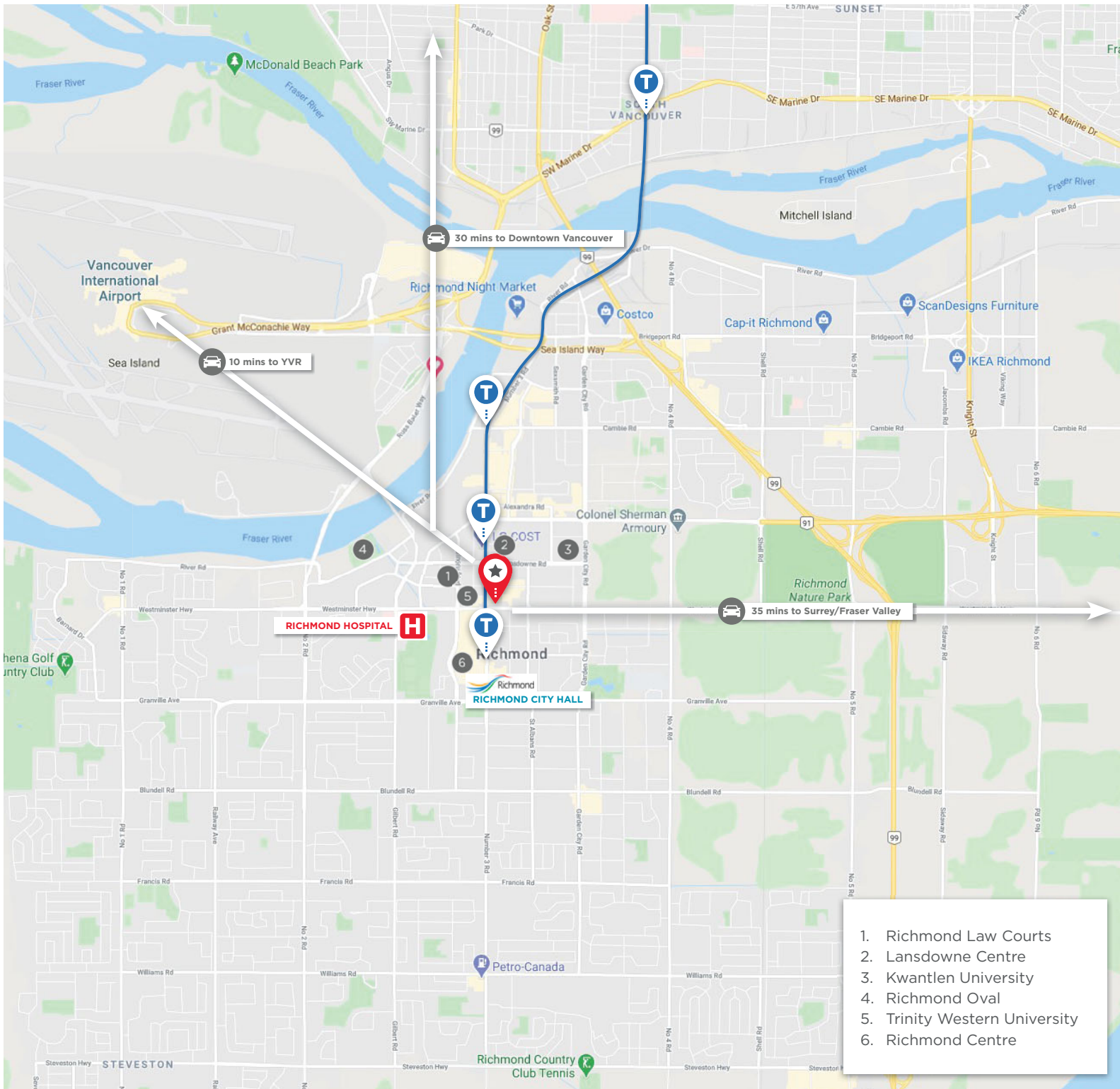




# FOR LEASE

## 5900 No. 3 ROAD

RICHMOND, BC



**Frances Wu**  
Senior Associate  
604 639 9356  
frances.wu@cushwake.com

E.&O.E.: This communication is not intended to cause or induce breach of an existing agency agreement.

The information contained herein was obtained from sources which we deem reliable and, while thought to be correct, is not guaranteed by Cushman & Wakefield ULC (05/23/bg)