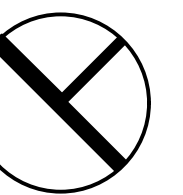
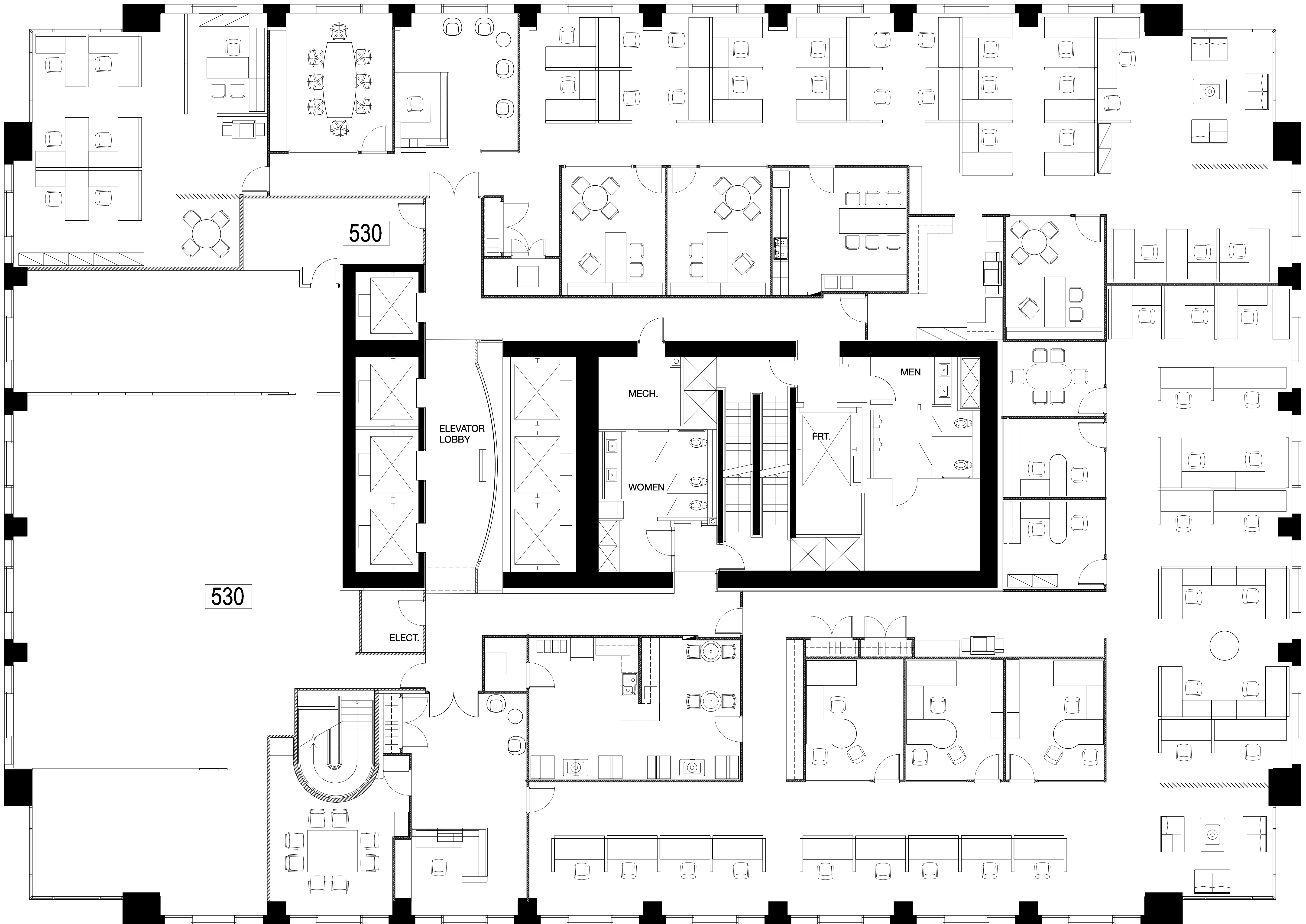


WEST GEORGIA



This drawing and related documents are the property of Marilyn McLean Interior Design Inc. Reproductions in part or whole is forbidden without written consent. The contractor shall be responsible for verifying dimensions on site before construction. This office shall be notified of any variation from the dimensions and conditions shown on the drawing. Written dimensions take precedence over scaled dimensions.



CLIENT NAME :  
925 W. GEORGIA ST  
5TH FLOOR  
Vancouver, BC

DRAWING NAME:  
OPEN PLAN TENANTS

FILE  
NAME:

DRAWN BY: MM

CHECKED BY:

DATE:

SCALE: 1/4" = 1'-0"

DRAWING NO.

ID-04

21 AUG, 2020