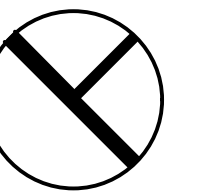
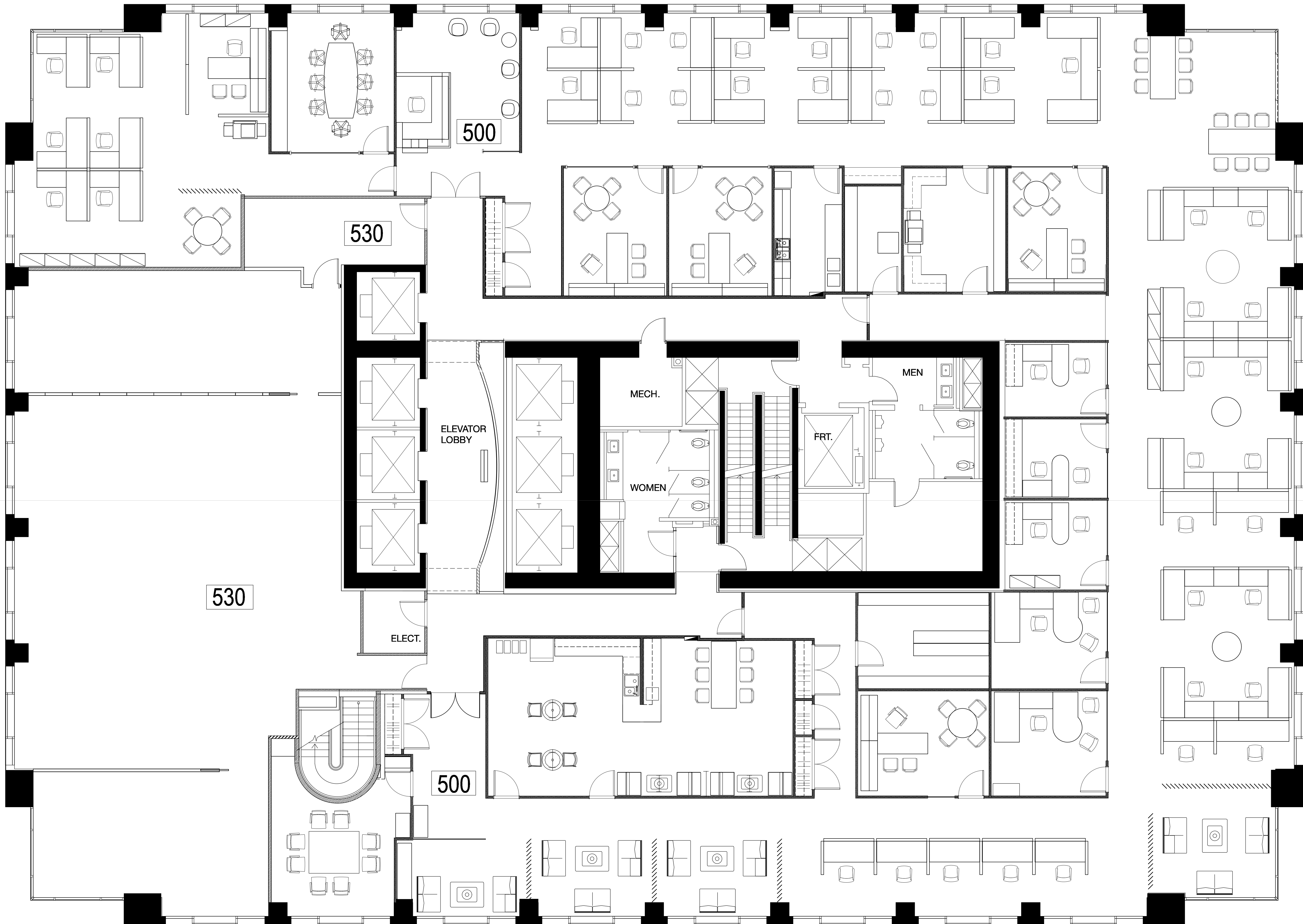


WEST GEORGIA



This drawing and related documents are the property of Marilyn McLean Interior Design Inc. Reproductions in part or whole is forbidden without written consent. The contractor shall be responsible for verifying dimension on site before construction. This office shall be notified of any variation from the dimensions and conditions shown on the drawing. Written dimensions take precedence over scaled dimensions.



CLIENT NAME :
925 W. GEORGIA ST
5TH FLOOR
Vancouver, BC

DRAWING NAME:
OPEN PLAN TENANT

FILE NAME:	
DRAWN BY:	MM
CHECKED BY:	
DATE:	
SCALE:	1/4" = 1'-0"

DRAWING NO.

ID-03

21 AUG, 2020