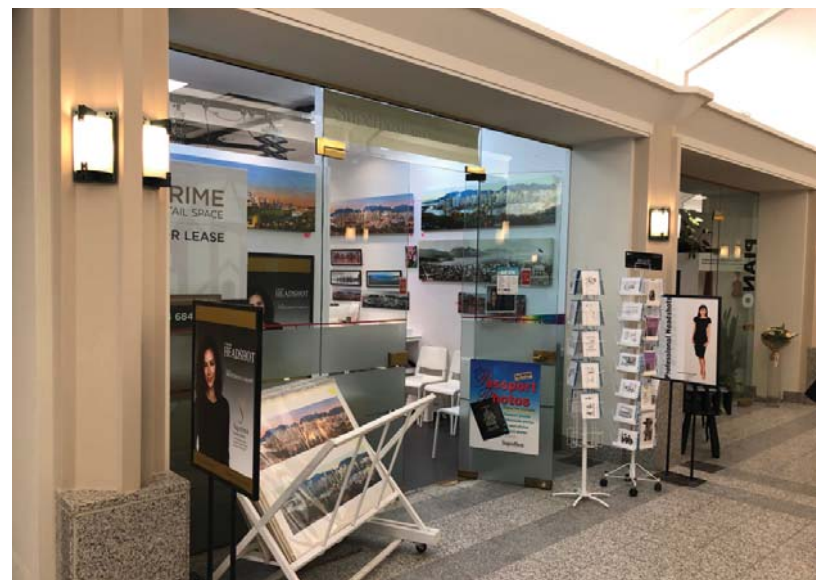
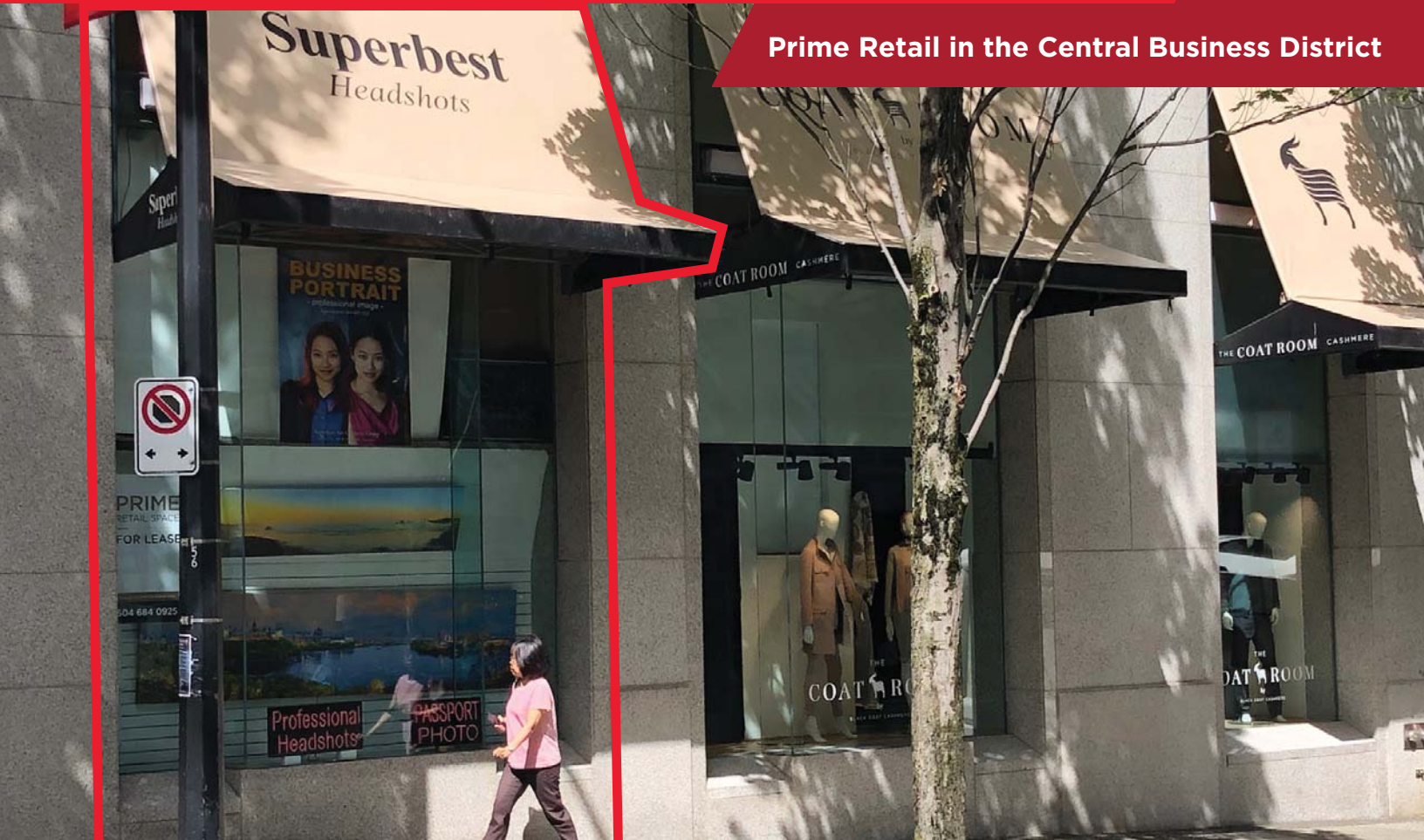




**CUSHMAN &  
WAKEFIELD**

**FOR LEASE  
SHAW TOWER AT CATHEDRAL PLACE  
#125 - 925 WEST GEORGIA STREET  
VANCOUVER, BC**

**Prime Retail in the Central Business District**



**Alastair Fergusson**  
Associate Vice President  
Retail Sale & Leasing  
604 640 5825  
[alastair.fergusson@cushwake.com](mailto:alastair.fergusson@cushwake.com)

Suite 700 - 700 West Georgia Street / PO Box 10023, Pacific Centre / Vancouver, BC V7Y 1A1  
604 683 3111 / 1 877 788 3111 / [cushmanwakefield.ca](http://cushmanwakefield.ca)





**CUSHMAN &  
WAKEFIELD**

# FOR LEASE SHAW TOWER AT CATHEDRAL PLACE #125 - 925 WEST GEORGIA STREET VANCOUVER, BC

## LOCATION

The subject premise is located in a high traffic setting just north of the West Georgia and Hornby Street intersection. Easy access is enjoyed via the building's expansive main floor lobby.

## OPPORTUNITY

To lease a rare small unit in the Central Business District. Shaw Tower at Cathedral Place is positioned near large neighbouring office buildings, tourist attractions and some of Vancouver's major hotels.

## FEATURES

- Large expansive glazed storefront
- In unit rough-in plumbing
- 100 Amp electrical service
- Common area washrooms

## AVAILABLE AREA

478 sf\*

\* Additional area available, call for details.

## AVAILABILITY

November 1, 2019

## BASE RENT

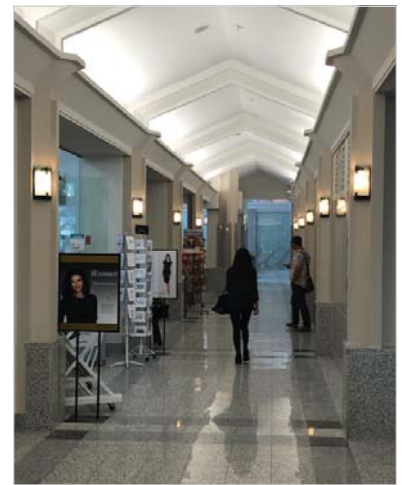
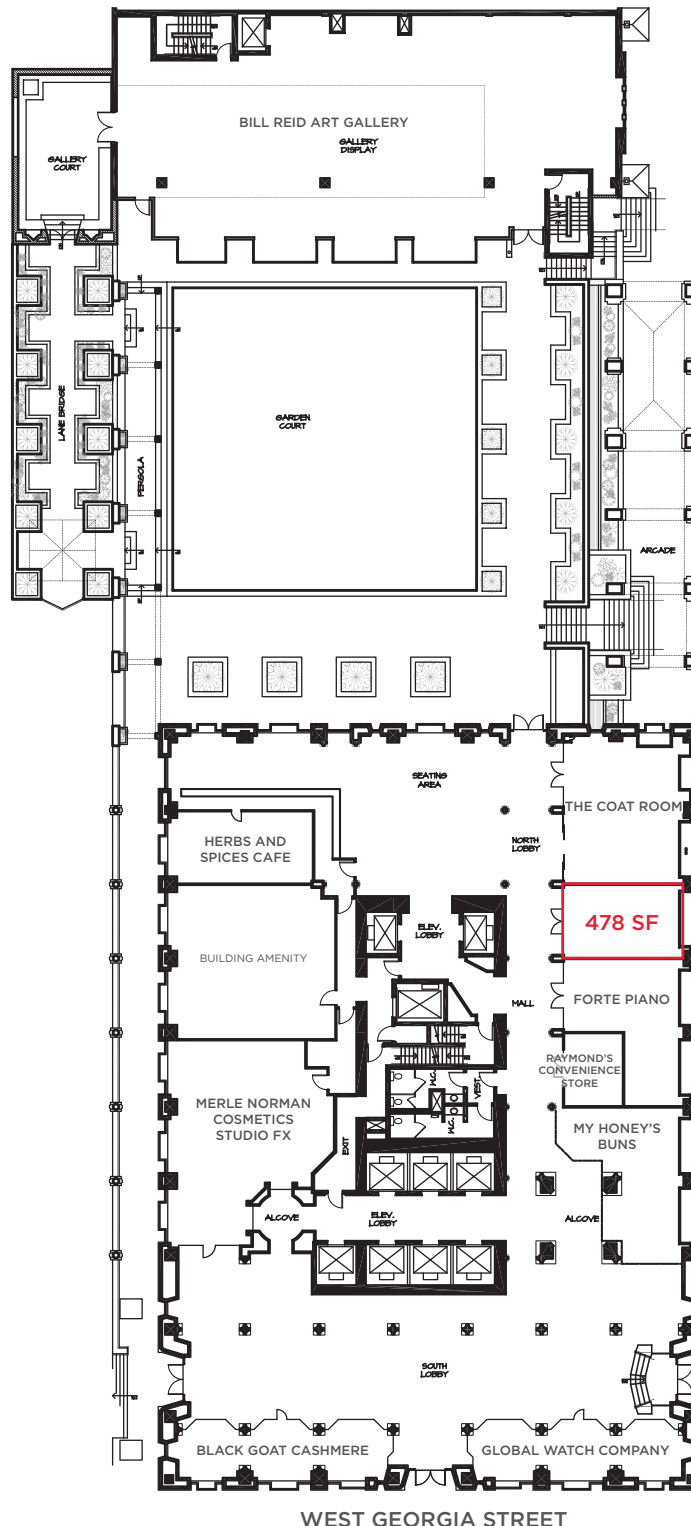
\$60.00 psf

## TAXES & OPERATING COSTS

\$18.78 psf

## AREA TENANTS

- Gucci
- Omega
- Dior
- Hawksworth
- Hy's
- HSBC
- Cafe Artigiano



## Alastair Fergusson

Associate Vice President

Retail Sale & Leasing

604 640 5825

alastair.fergusson@cushwake.com

