

Biscuit Block

438 11th Avenue SE,
Calgary, AB



Property
Highlights

PAGE 2 - 4

Floor
Plans

PAGE 5

Local
Amenities

PAGE 6

ALLIED

CBRE

Property Highlights

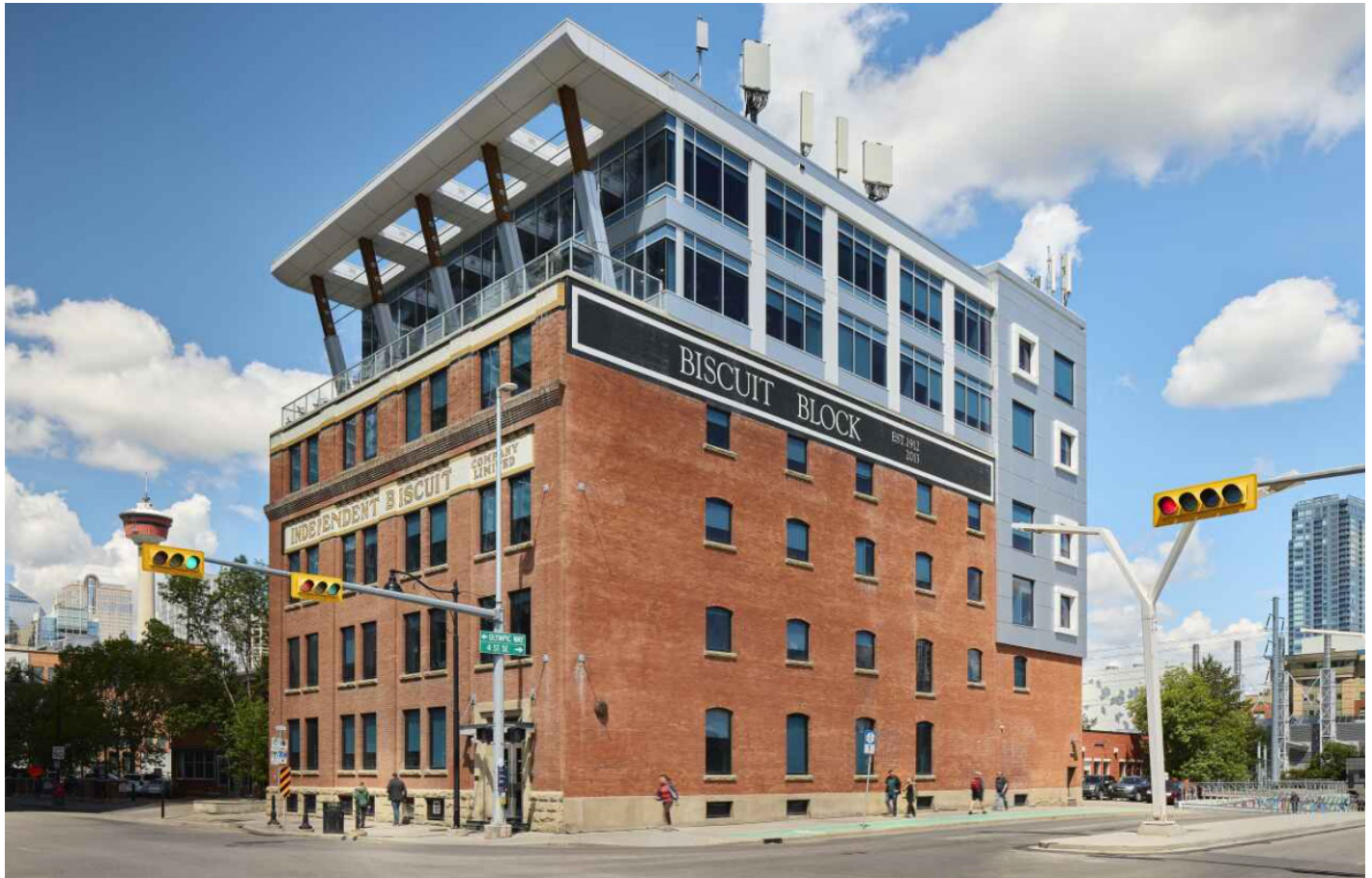
| | |
|------------------------|---------------------------|
| NET RENT | Market |
| ADDITIONAL RENT | \$16.48 PSF (2025) |
| TERM | TBD |
| FIBRE/IT | Telus and Shaw |
| YEAR BUILT | 1910 |
| PARKING RATIO | 1 stall:1,282 SF |
| PARKING RATE | \$275/Stall/Month |

AVAILABILITIES

| SUITE | SIZE (SF) | DATE AVAILABLE | PARKING |
|-----------|-----------|----------------|--------------------|
| Suite 010 | 6,561 | March 1, 2026 | 5 stalls allocated |
| Suite 400 | 8,070 | April 1, 2026 | 6 stalls allocated |
| Suite 500 | 7,374 | April 1, 2026 | 5 stalls allocated |
| Suite 600 | 4,599 | July 1, 2025 | 3 stalls allocated |

The Biscuit Block has been renewed and expanded, providing a rare opportunity for upgraded character space in Victoria Park.

Located on the intersection of 4th Street SE and 11th Avenue SE, The Biscuit Block offers easy access to Calgary's vibrant East Village community via the 4th Street SE underpass, ample food and drink amenities, the Stampede Grounds, BMO Event Centre, the Calgary Flames new arena and much more.



New Fitness Facility

CBRE proudly introduces Forme to the market on behalf of Allied Properties REIT. Forme offers a fitness experience for Allied tenants across their Calgary* portfolio.

The newly built fitness facility in the Vintage Towers now welcomes tenants to enjoy the endless options of fitness machinery, free weights, lockers, changerooms, showers and much more.

*Subject to landlord approval and excludes Woodstone, Local Motive and Loughheed Block.

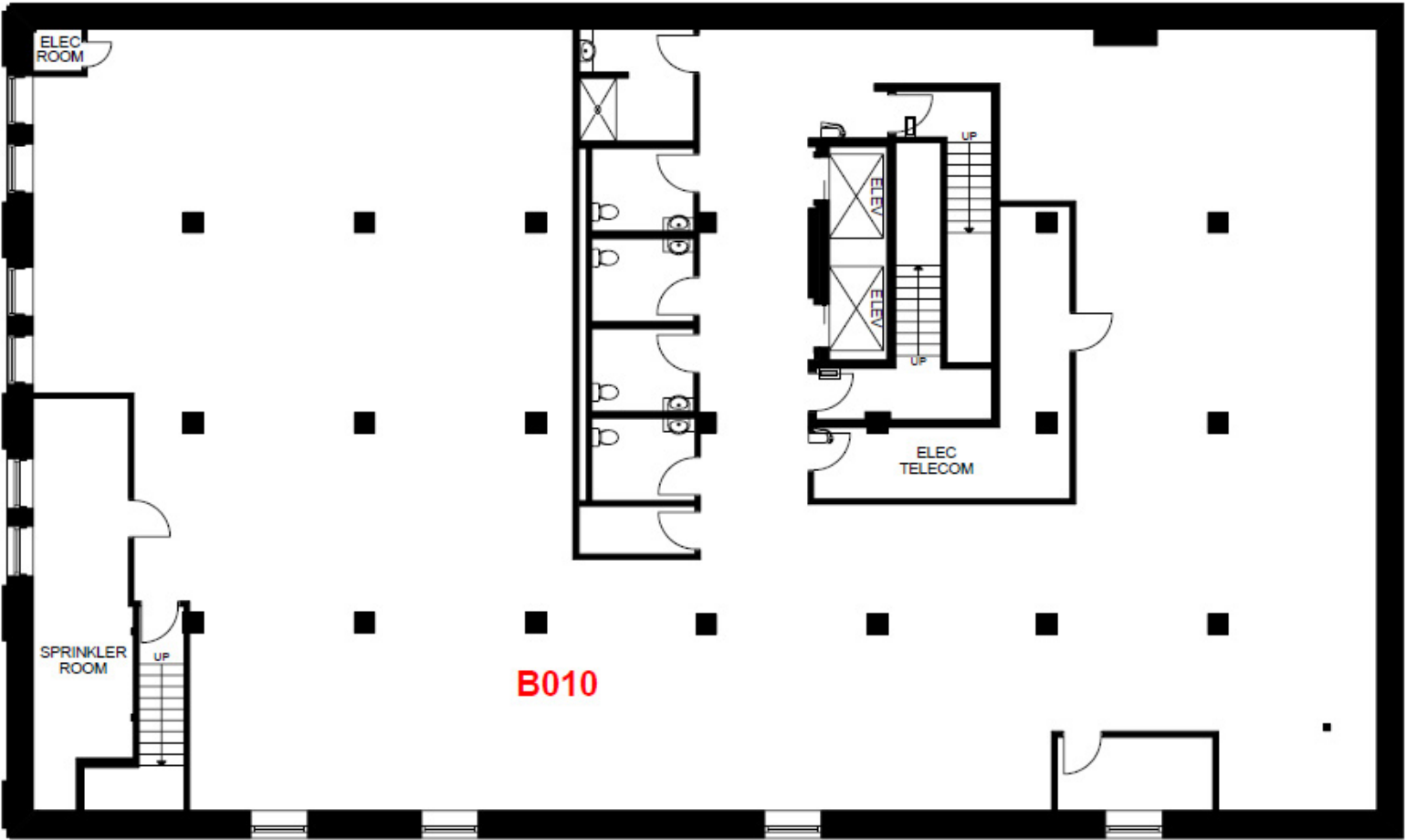


New Conference Centre



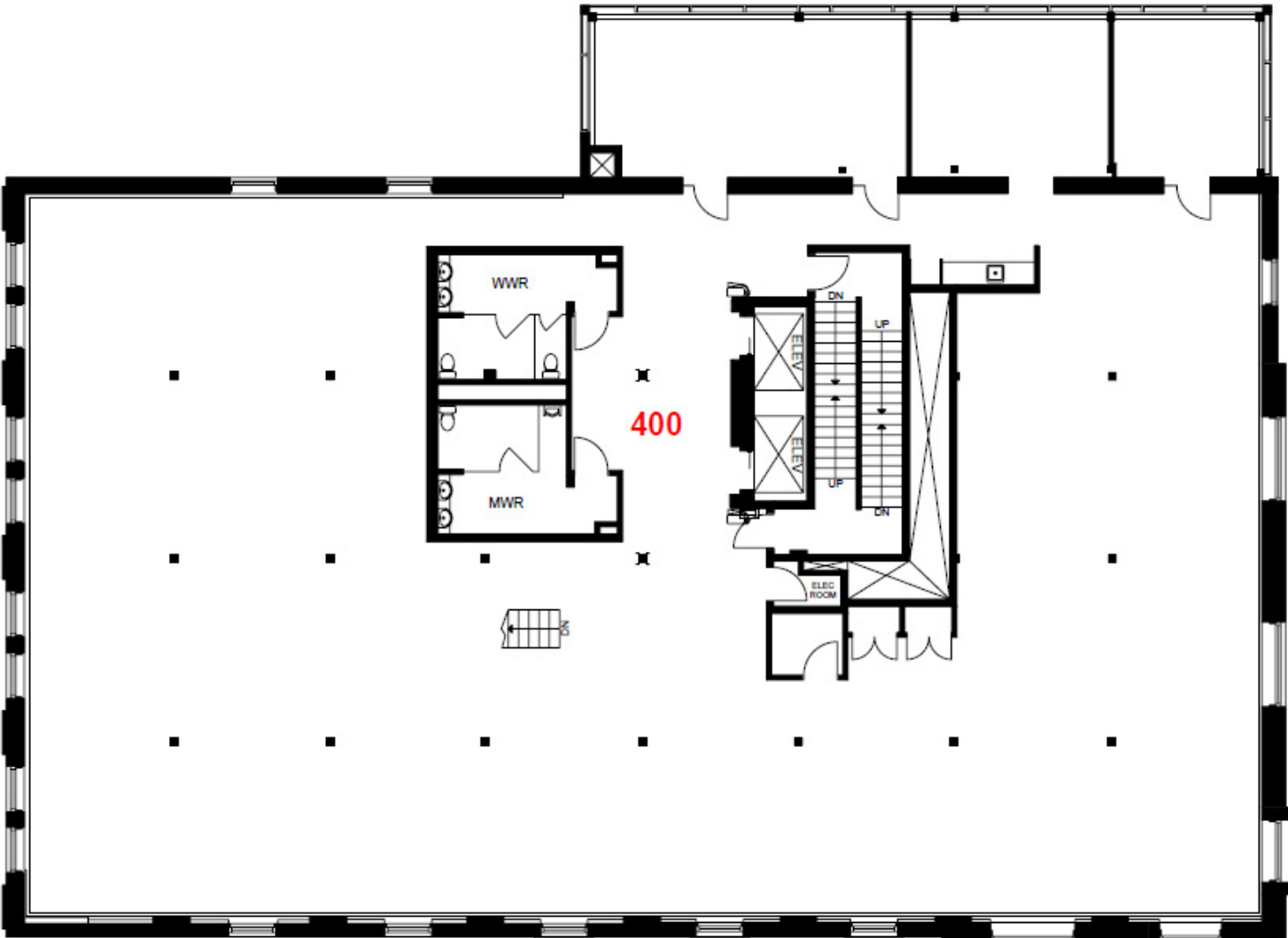
Suite 010

6,561 SF



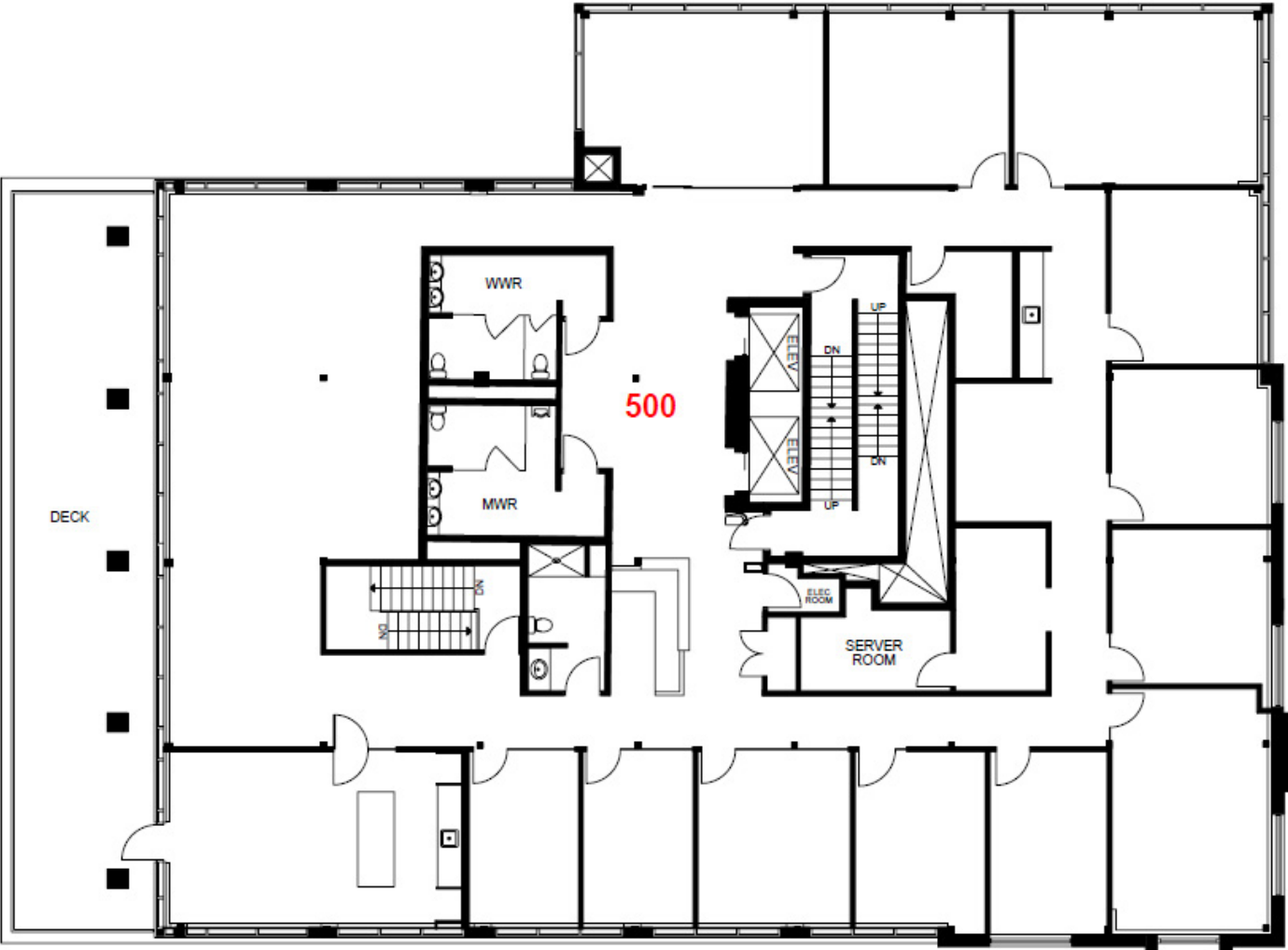
Suite 400

8,070 SF



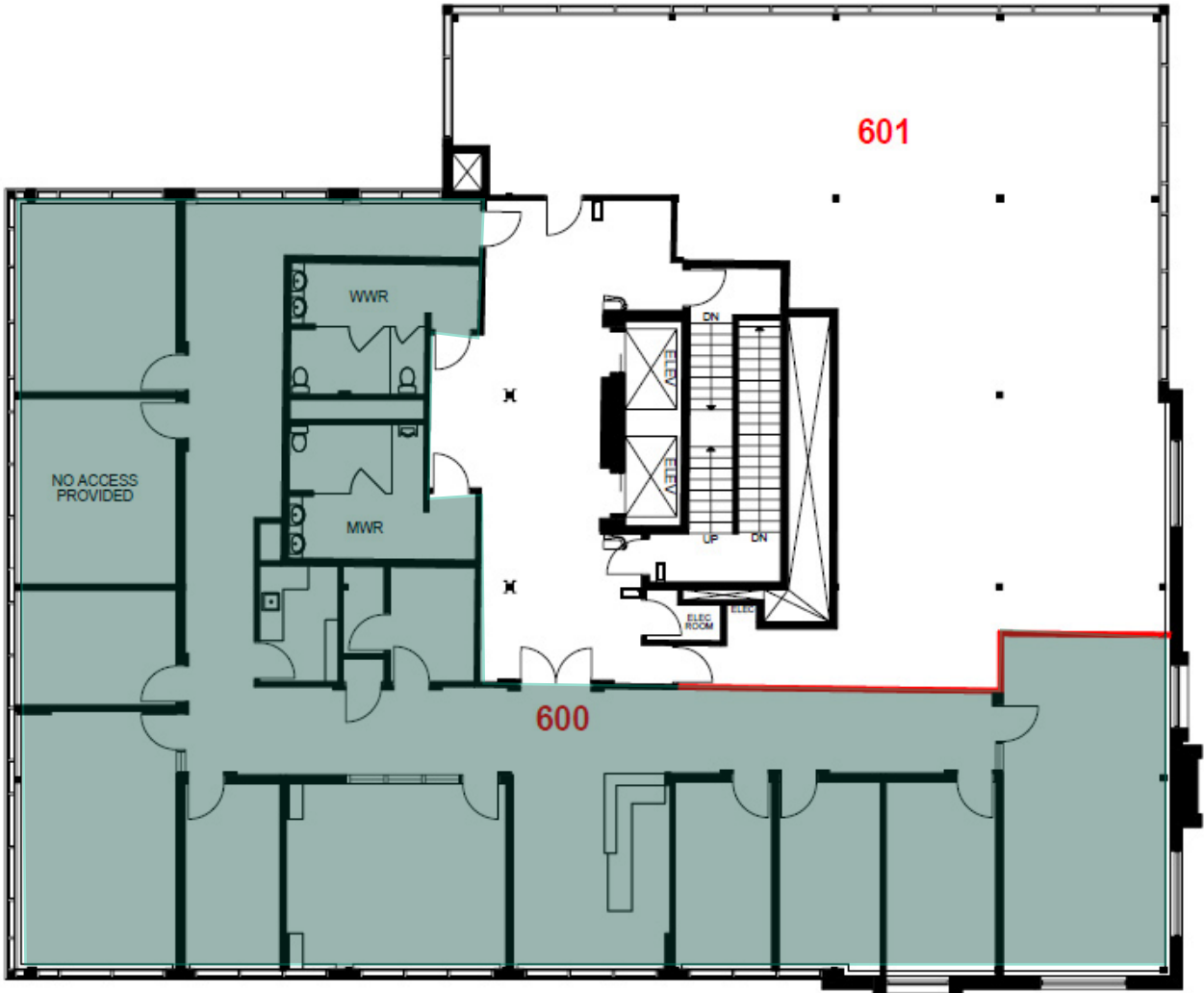
Suite 500

7,374 SF

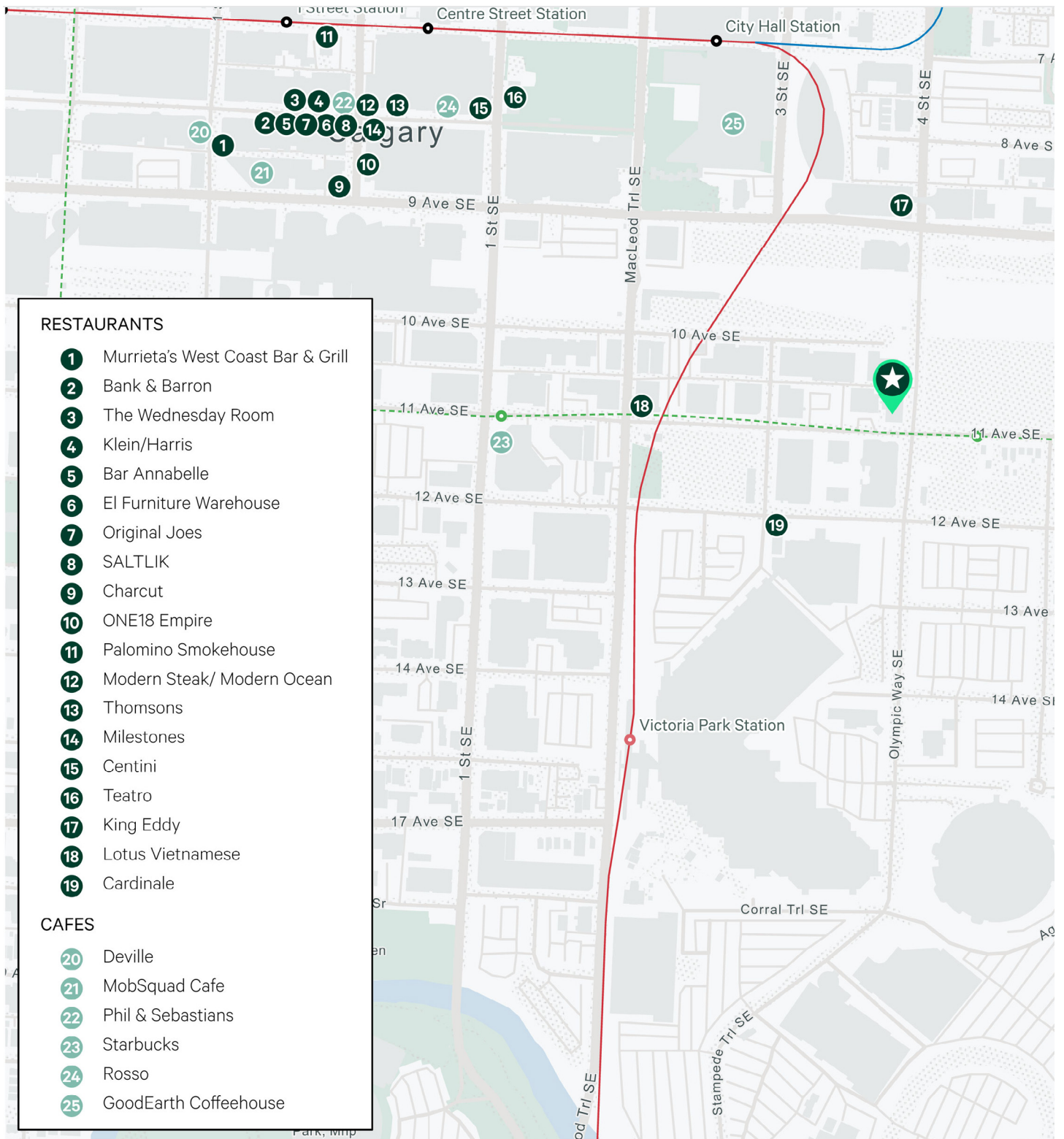


Suite 600

4,599 SF VIRTUAL TOUR



Local Amenities



Biscuit Block

438 11th Avenue SE
Calgary, AB



STUART WATSON*
Senior Vice President
+1 (403) 750-0540
stuart.watson@cbre.com

KATIE SAPIEHA*
Senior Vice President
+1 (403) 750-0529
katie.sapieha@cbre.com

SYDNEY VON VEGESACK
Director, Leasing
+1 (587) 779-6154
svonvegessack@alliedreit.com

CBRE Limited, Real Estate Brokerage

*Sales Representative

This disclaimer shall apply to CBRE Limited, Real Estate Brokerage, and to all other divisions of the Corporation; to include all employees and independent contractors (CBRE). The information set out herein, including, without limitation, any projections, images, opinions, assumptions and estimates obtained from third parties (the Information) has not been verified by CBRE, and CBRE does not represent, warrant or guarantee the accuracy, correctness and completeness of the Information. CBRE does not accept or assume any responsibility or liability, direct or consequential, for the Information or the recipient's reliance upon the Information. The recipient of the Information should take such steps as the recipient may deem necessary to verify the Information prior to placing any reliance upon the Information. The Information may change and any property described in the Information may be withdrawn from the market at any time without notice or obligation to the recipient from CBRE. CBRE and the CBRE logo are the service marks of CBRE Limited and/or its affiliated or related companies in other countries. All other marks displayed on this document are the property of their respective owners. All Rights Reserved. Mapping Sources: Canadian Mapping Services canadamapping@cbre.com; DMTI Spatial, EnviroNics Analytics, Microsoft Bing, Google Earth.

ALLIED

CBRE