

136 WATLINE AVENUE

Units 1-2 & Units 5-6 :: Mississauga

AERIAL
VIEW



	UNITS 1-2	UNITS 5-6
TOTAL AREA (OFFICE AREA):	9,200 SF (2,400 SF)	10,880 SF (3,250 SF)
CLEAR HEIGHT:	16'8"	16'8"
SHIPPING:	1 T/L Door 1 D/I Door	2 T/L Doors 1 D/I Door
POWER:	600 Volts/100 Amps	600 Volts/200 Amps
ZONING:	E2	E2
LEASE RATE:	\$6.05 net psf	\$6.05 net psf
T.M.I FOR 2011:	\$3.45	\$3.45

FOR MORE
INFORMATION
PLEASE
CONTACT

Theymy Koutrakos*, C.E.T.
Associate Vice President
416.798.6231
theymy.koutrakos@cbre.com

*Sales Representative
**Broker

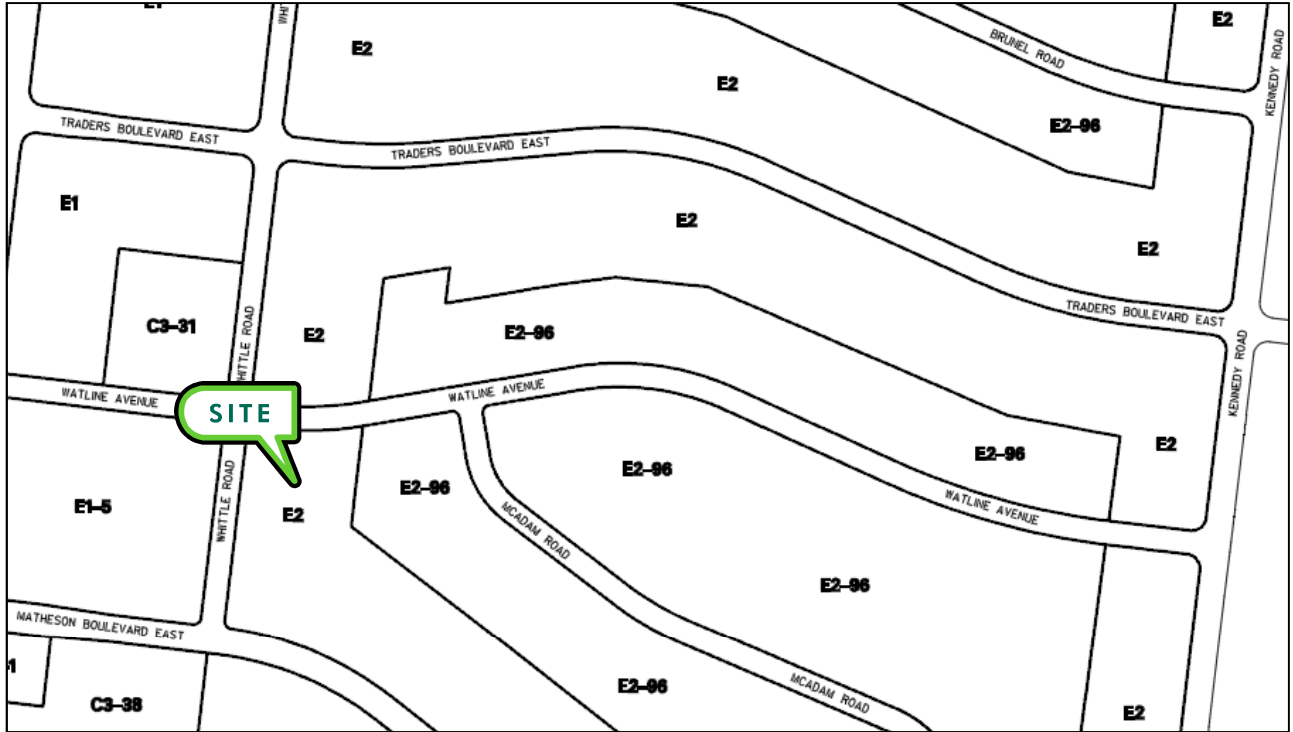




136 WATLINE AVENUE

Units 1-2 & Units 5-6 :: Mississauga

ZONING



PROPERTY PHOTOS

Units 1-2



Units 5-6



FOR MORE
INFORMATION
PLEASE
CONTACT

Theymy Koutrakos*, C.E.T.
Associate Vice President
416.798.6231
theymy.koutrakos@cbre.com

*Sales Representative
**Broker

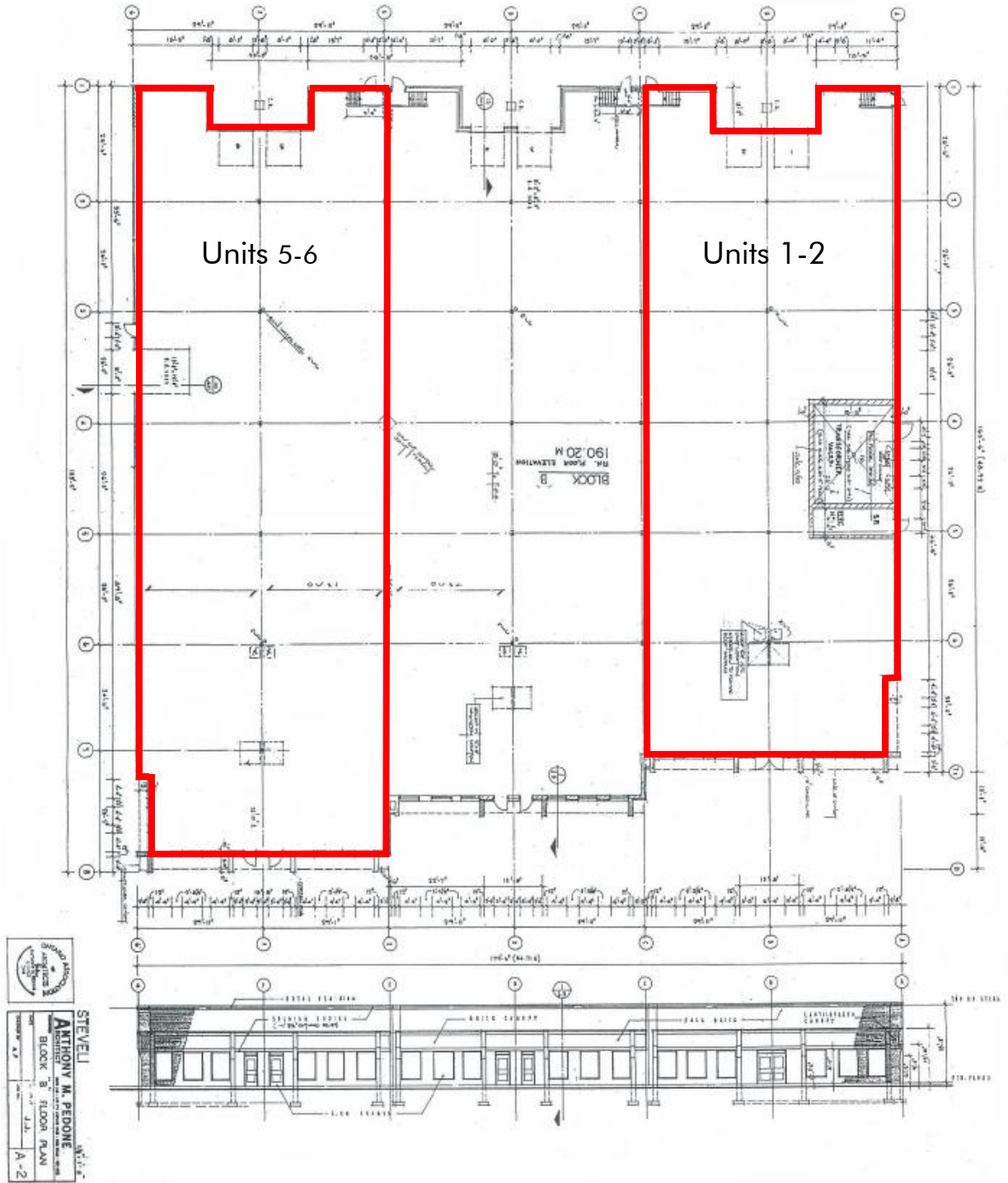




136 WATLINE AVENUE

Units 1-2 & Units 5-6 :: Mississauga

FLOOR PLAN



FOR MORE
INFORMATION
PLEASE
CONTACT

Theymy Koutrakos*, C.E.T.
Associate Vice President
416.798.6231
theymy.koutrakos@cbre.com

*Sales Representative
**Broker



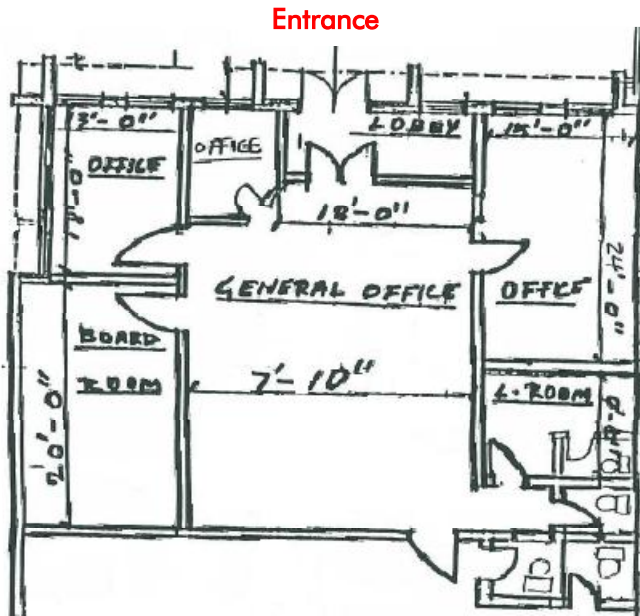


136 WATLINE AVENUE

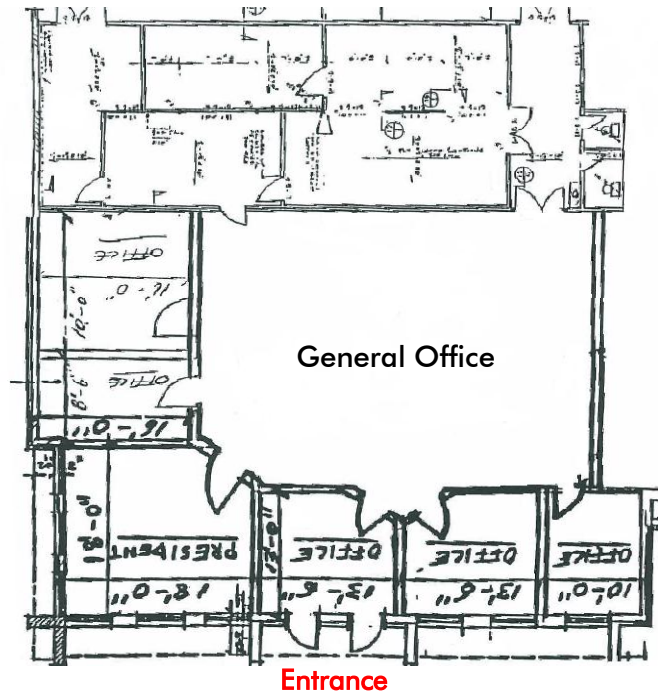
Units 1-2 & Units 5-6 :: Mississauga

OFFICE LAYOUT:

Units 1-2



Units 5-6



FOR MORE
INFORMATION
PLEASE
CONTACT

Theymy Koutrakos*, C.E.T.
Associate Vice President
416.798.6231
theymy.koutrakos@cbre.com

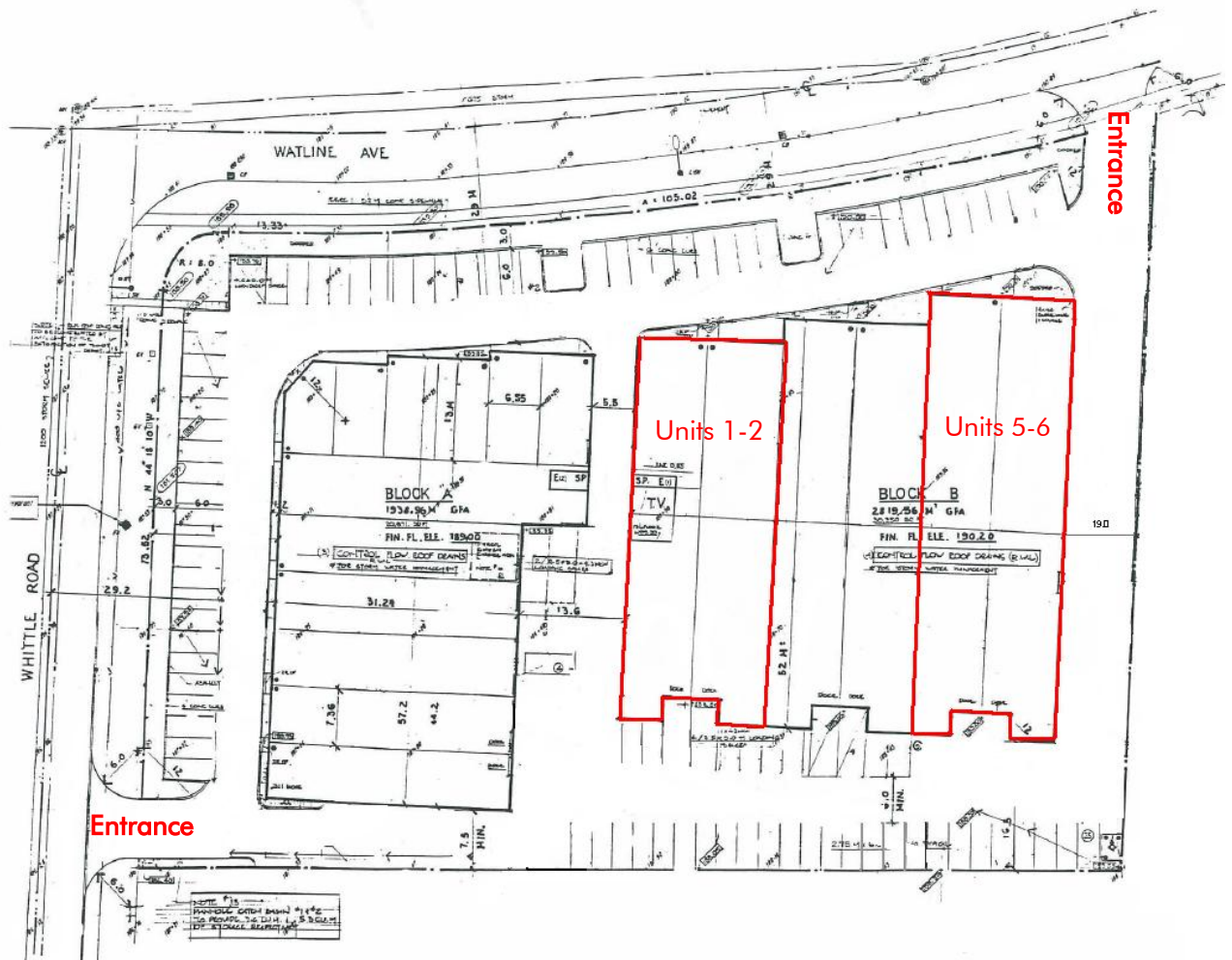
*Sales Representative
**Broker



136 WATLINE AVENUE

Units 1-2 & Units 5-6 :: Mississauga

SITE PLAN



FEATURES

Units 1-2

- New Paint & Carpet.
- New A/C Unit & Warehouse Heating Unit (To Be Installed By Landlord).
- Concrete Mezzanine (Approx. 700 SF Included in Total SF).
- Well Appointed Offices.

Units 5-6

- New Drive-In Doors & Truck-Level Doors (To Be Installed By Landlord).
- Floor Drain in Warehouse.
- New A/C Unit Installed November 2010.
- Well Appointed Offices

FOR MORE
INFORMATION
PLEASE
CONTACT

Theymy Koutrakos*, C.E.T.

Associate Vice President

416.798.6231

theymy.koutrakos@cbre.com

*Sales Representative
**Broker

CBRE
CB RICHARD ELLIS

© 2011 CB Richard Ellis Limited. This disclaimer shall apply to CB Richard Ellis Limited, Brokerage, and to all other divisions of the Corporation ("CBRE"). The information set out herein (the "Information") has not been verified by CBRE, and CBRE does not represent, warrant or guarantee the accuracy, correctness and completeness of the Information. CBRE does not accept or assume any responsibility or liability, direct or consequential, for the Information or the recipient's reliance upon the Information. The recipient of the Information should take such steps as the recipient may deem necessary to verify the Information prior to placing any reliance upon the Information. The Information may change and any property described in the Information may be withdrawn from the market at any time without notice or obligation to the recipient from CBRE.