



For Lease

Edmonton, AB

KNELSEN OFFICE

11211 Winterburn Road NW

Available Space:

5,000 SF

Gross Lease Rate:

\$13.50 PSF

Fully furnished office in
Northwest Edmonton

For more info Contact:

Darryl McGavigan

Senior Vice President

780 328 0064

Darryl.McGavigan@jll.com

Chad Boddez

Senior Vice President

780 328 2567

Chad.Boddez@jll.com



Civic Address 11211 Winterburn Road NW, Edmonton

Legal Description Plan: 843RS; Lot: H

Available Area 5,000 SF

Lease Rate \$13.50 PSF Gross

Zoning IM - Medium Industrial

Year Built 1991

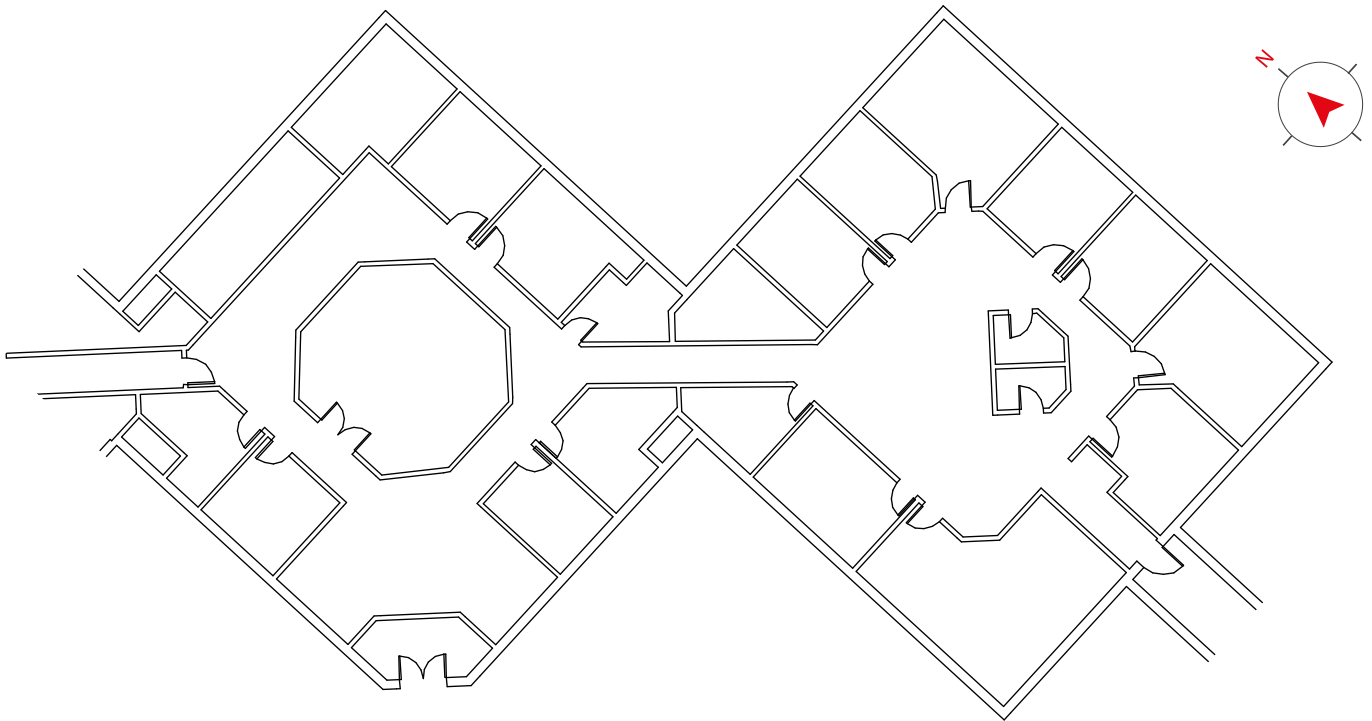
Lighting T5

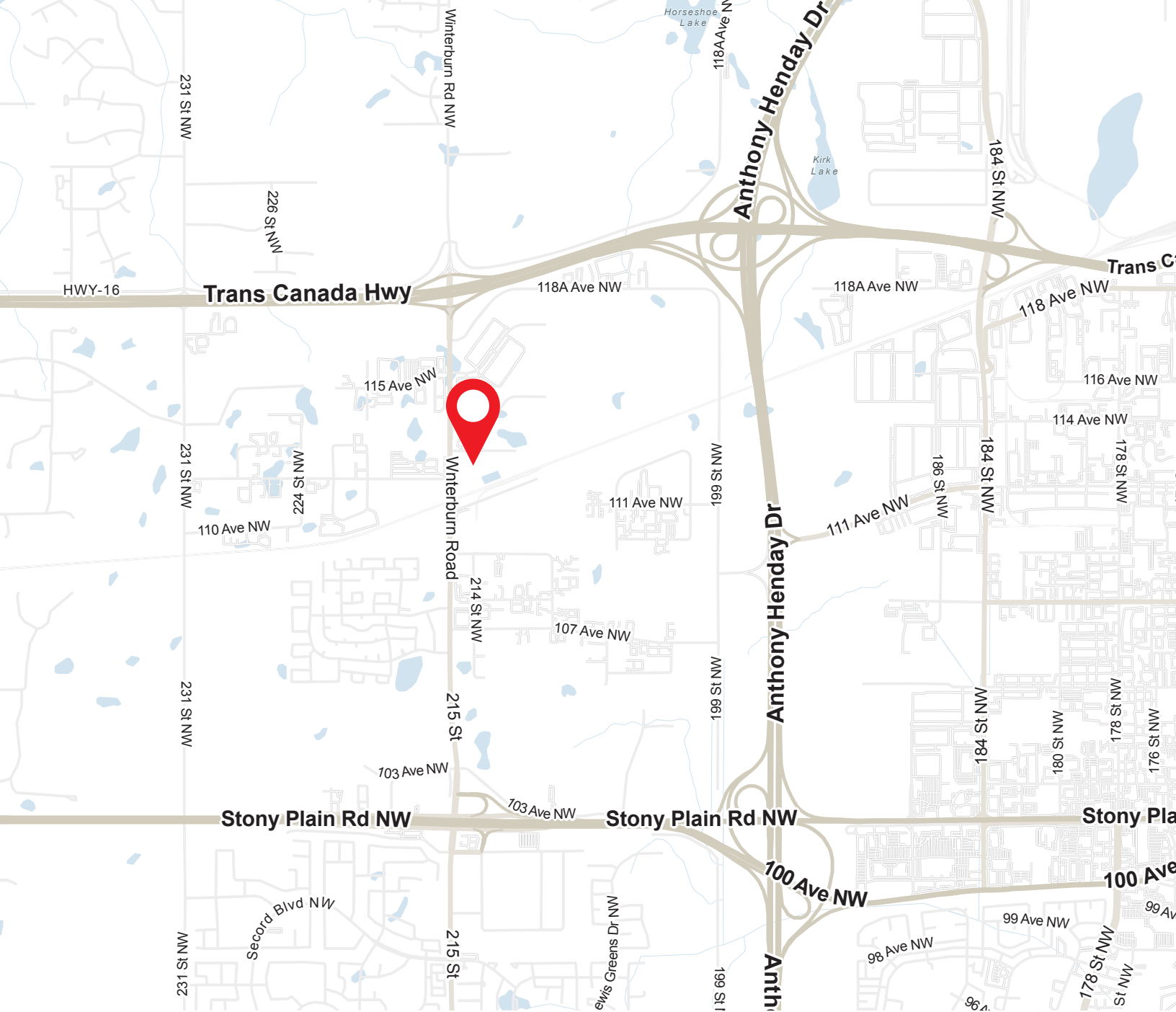
Other Features Fully developed move-in ready office space
Furnishing negotiable
Exclusive, separate entrance
Signage opportunity
Sufficient parking at no additional cost
Competitive rates





Floor Plans





For more information or to view, please contact:

Darryl McGavigan
Senior Vice President
780 328 0064
Darryl.McGavigan@jll.com

Chad Boddez
Senior Vice President
780 328 2567
Chad.Boddez@jll.com

JLL Edmonton Industrial
780 328 2550
2101, 10088 102 Avenue NW
Edmonton, Alberta T5J 2Z1

DISCLAIMER: Although information has been obtained from sources deemed reliable, neither Owner nor JLL makes any guarantees, warranties or representations, express or implied, as to the completeness or accuracy as to the information contained herein. Any projections, opinions, assumptions or estimates used are for example only. There may be differences between projected and actual results, and those differences may be material. The Property may be withdrawn without notice. Neither Owner nor JLL accepts any liability for any loss or damage suffered by any party resulting from reliance on this information. If the recipient of this information has signed a confidentiality agreement regarding this matter, this information is subject to the terms of that agreement. ©2022. Jones Lang LaSalle IP, Inc. All rights reserved.

