

# FOR LEASE

## MAIN FLOOR OFFICE SPACE

9337-37 Avenue NW, Edmonton, AB



### HIGHLIGHTS

- 2,378 sq ft ± of main floor office space
- Modern office space features reception area, 8 offices, kitchenette, washroom and storage
- Optional 1,500 sq ft ± of storage area is available
- Designated parking and street parking available
- Conveniently located on the southside with excellent access to 91<sup>st</sup> Street & Whitemud Drive

### CONTACT

#### SCOTT ENDRES

Partner, Broker

T 780.423.7588

C 780.720-6541

scott@royalparkrealty.com

#### JOEL WOLSKI

Director, Associate

T 780.423.7599

C 780.904.5630

joel@royalparkrealty.com

#### JOANNA LEWIS

Associate

T 780.423.7580

C 780.999.9642

joanna@royalparkrealty.com



ROYAL PARK  
REALTY™

T 780.448.0800 F 780.426.3007  
#201, 9038 51 Avenue NW Edmonton, AB T6E 5X4

royalparkrealty.com

# FOR LEASE | Main Floor Office Space in Southeast Edmonton



## PROPERTY DETAILS

MUNICIPAL ADDRESS	9337-37 Avenue NW, Edmonton, AB
LEGAL DESCRIPTION	Plan: 7621409; Block: 20; Lot: 2
ZONING	BE (Business Employment)
SIZE	2,378 sq ft ±
HVAC	Forced air and air conditioning
LIGHTING	Fluorescent
PARKING	7 Designated stalls (street parking available)
SIGNAGE	Facade



## FINANCIALS

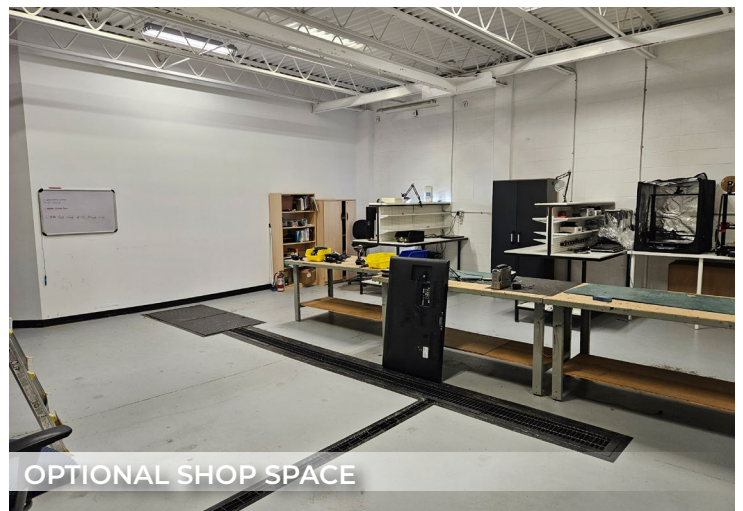
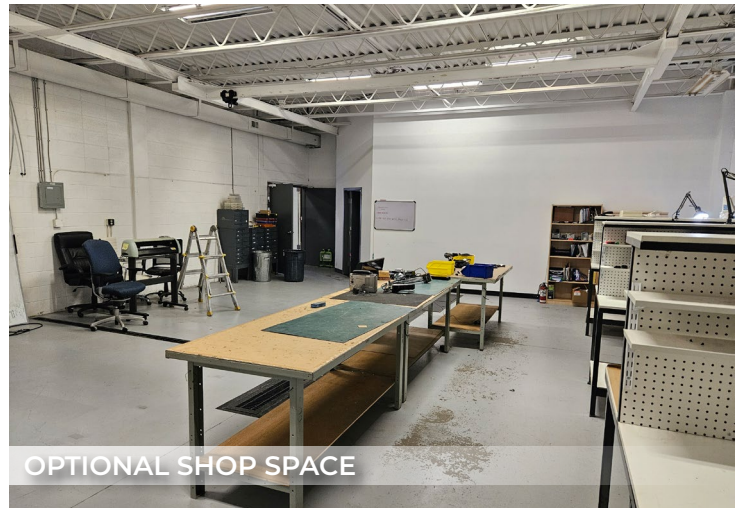
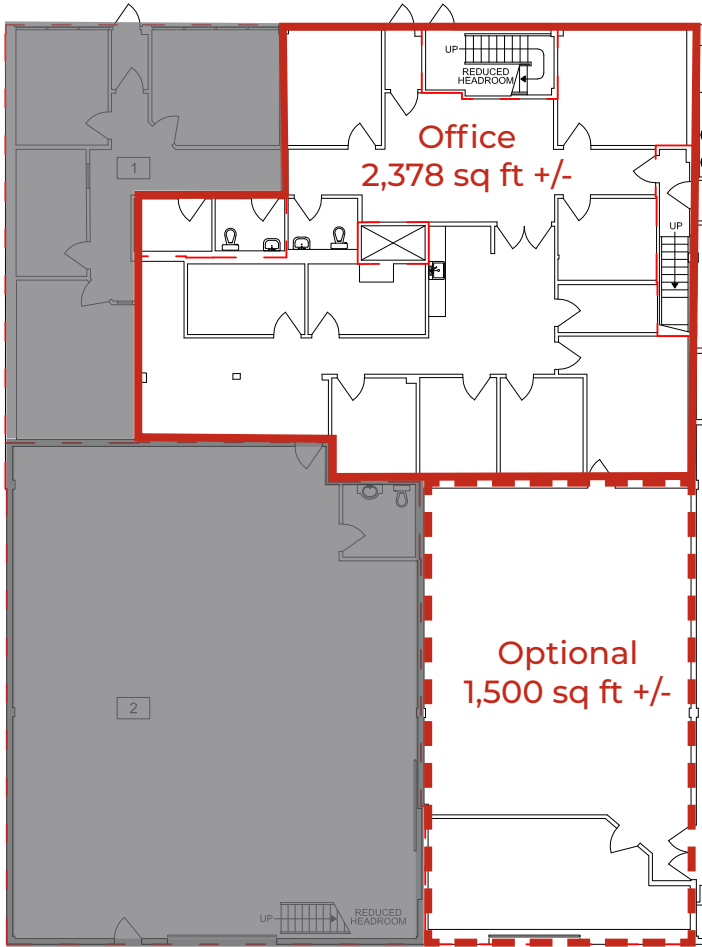
LEASE RATE	\$14.50/sq ft
OPERATING COSTS	\$7.00/sq ft (2024)
POSSESSION	Negotiable



T 780.448.0800 F 780.426.3007  
#201, 9038 51 Avenue NW Edmonton, AB T6E 5X4

[royalparkrealty.com](http://royalparkrealty.com)

# FLOOR PLAN | Main Floor Office Space in Southeast Edmonton



## ADDITIONAL INFORMATION

- The main floor office space includes a reception area, 1 washroom, 8 offices, a kitchenette and storage.
- Features large windows for ample natural light
- Separate entrance

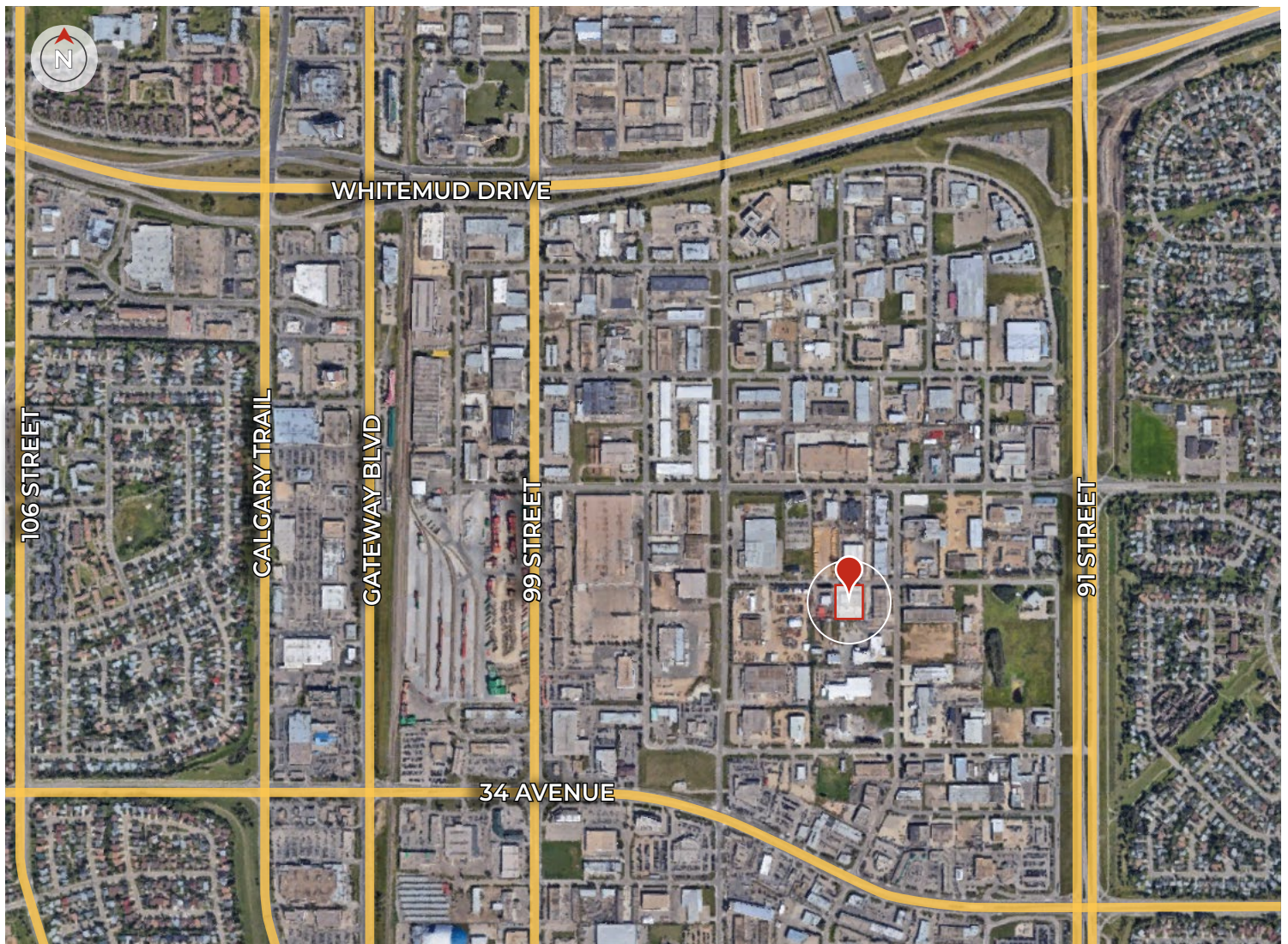


ROYAL PARK  
REALTY™

T 780.448.0800 F 780.426.3007  
#201, 9038 51 Avenue NW Edmonton, AB T6E 5X4

royalparkrealty.com

# PROPERTY LOCATION | Main Floor Office Space in Southeast Edmonton



*Quality Based on Results, Not Promises.*

## Contact Our Team For More Information

### SCOTT ENDRES

Partner, Broker

T 780.423.7588

C 780.720.6541

scott@royalparkrealty.com

### JOEL WOLSKI

Director, Associate

T 780.423.7599

C 780.904.5630

joel@royalparkrealty.com

### JOANNA LEWIS

Associate

T 780.423.7580

C 780.999.9642

joanna@royalparkrealty.com



**RP**  
ROYAL PARK  
REALTY™

T 780.448.0800 F 780.426.3007  
#201, 9038 51 Avenue NW Edmonton, AB T6E 5X4

royalparkrealty.com