

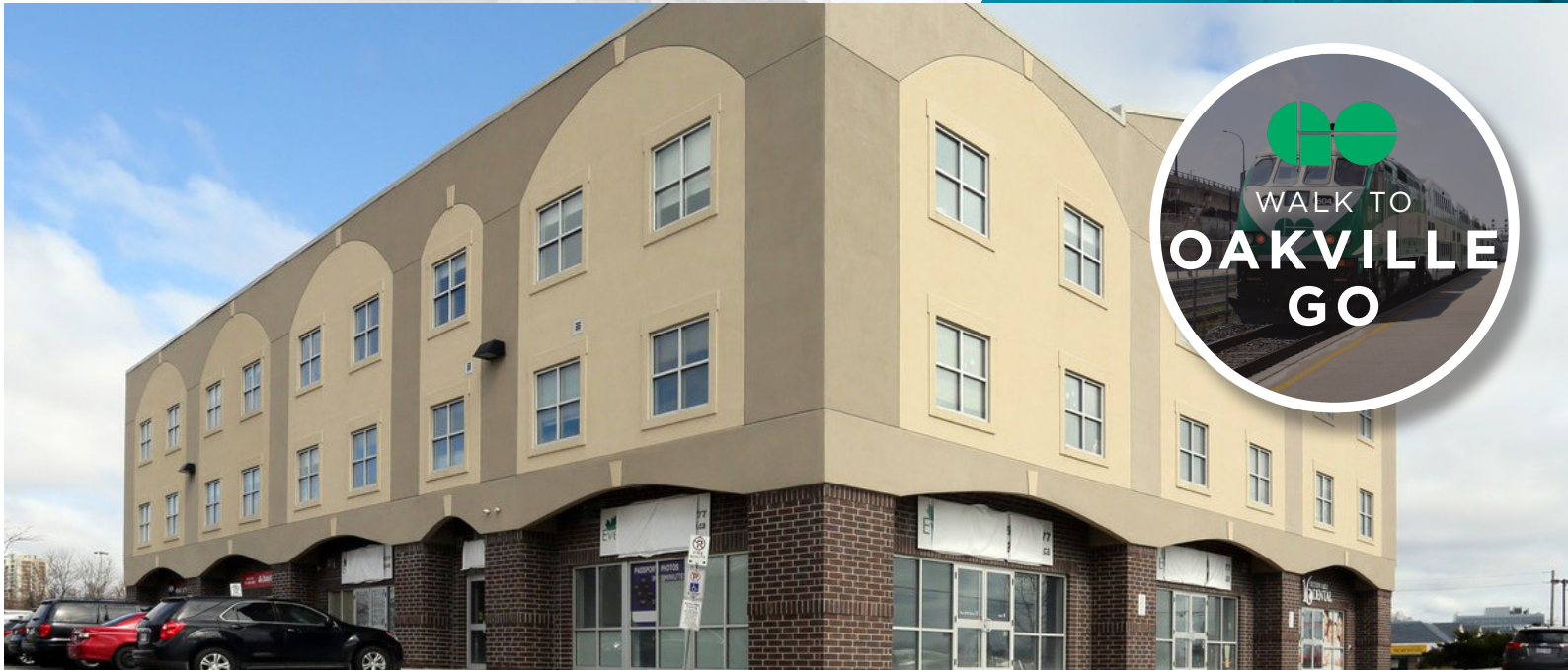
OFFICE FOR LEASE

165 CROSS AVENUE

OAKVILLE, ONTARIO



CUSHMAN & WAKEFIELD



PROPERTY FEATURES

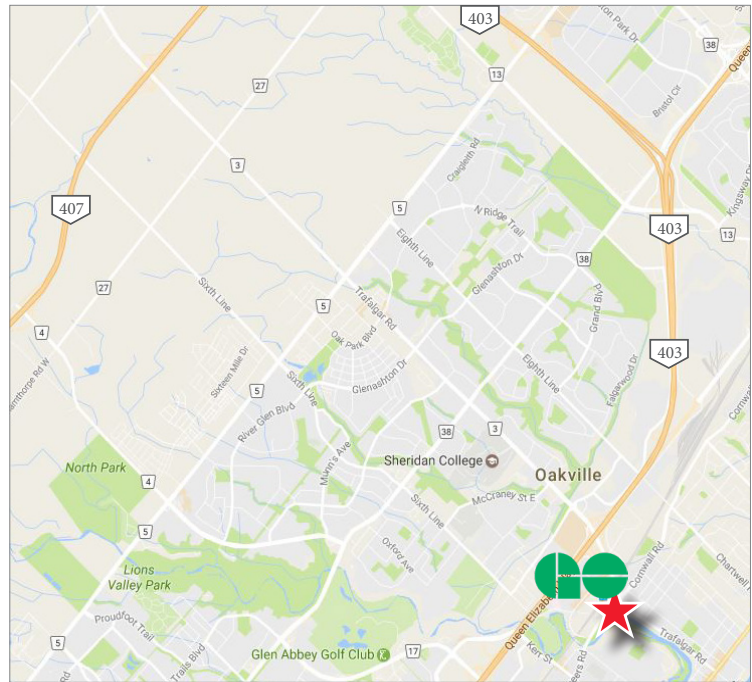
- High exposure directly across from Oakville GO Station
- Cross Avenue exposure
- High traffic area
- Retail signage potential

OFFICE

Suite 201:	4,246 SF LEASED
Suite 301:	3,351 SF
Suite 302:	3,283 SF
Net Asking Rate:	\$18.50 PSF Net
Additional Rent:	\$13.15 PSF (2024 est.) excluding in-suite janitorial

RETAIL

Suite 102:	958 SF LEASED
Suite 103-104:	2,281 SF LEASED
Suite 105:	904 SF LEASED
Suite 106:	3,213 SF LEASED
Suite 107:	725 SF LEASED
Net Asking Rate:	\$23.00 PSF Net
Additional Rent:	\$10.81 PSF (2024 est.) excluding in-suite janitorial
Term:	To be determined
Parking:	Ample Free Parking



MARC DANKO*

Senior Vice President
905 501 6467
marc.danko@cushwake.com

CUSHMAN & WAKEFIELD ULC, BROKERAGE

1 Prologis Boulevard, Suite 300
Mississauga, ON, L5W 0G2
main 905 568 9500
cushmanwakefield.com

OFFICE FOR LEASE

165 CROSS AVENUE

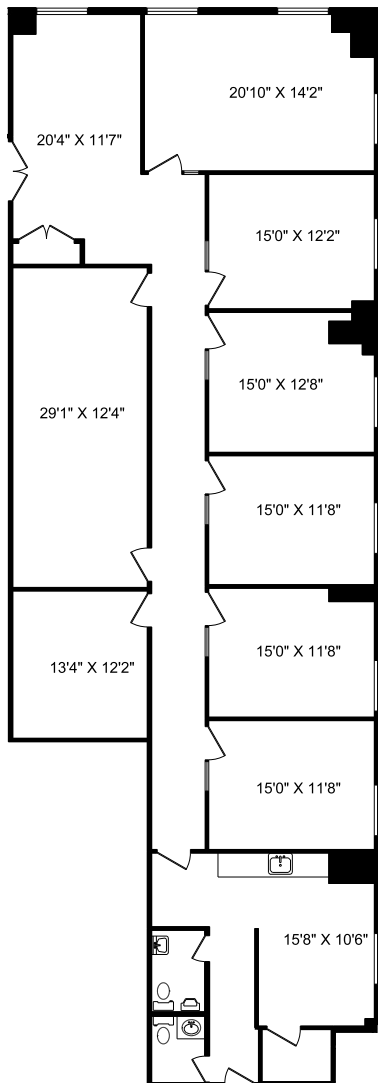
OAKVILLE, ONTARIO



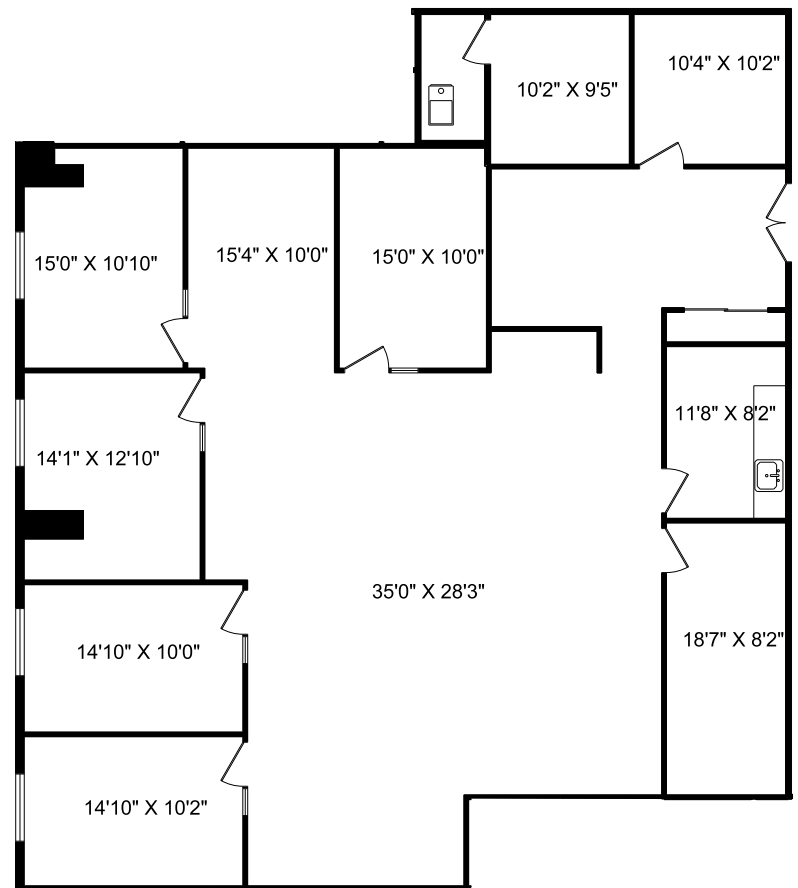
CUSHMAN &
WAKEFIELD

FLOOR PLAN

SUITE 301 - 3,351 SF



SUITE 302 - 3,283 SF



MARC DANKO*
Senior Vice President
905 501 6467
marc.danko@cushwake.com

CUSHMAN & WAKEFIELD ULC, BROKERAGE
1 Prologis Boulevard, Suite 300
Mississauga, ON, L5W 0G2
main 905 568 9500
cushmanwakefield.com

©2024 Cushman & Wakefield. All rights reserved. The information contained in this communication is strictly confidential. This information has been obtained from sources believed to be reliable but has not been verified. NO WARRANTY OR REPRESENTATION, EXPRESS OR IMPLIED, IS MADE AS TO THE CONDITION OF THE PROPERTY (OR PROPERTIES) REFERENCED HEREIN OR AS TO THE ACCURACY OR COMPLETENESS OF THE INFORMATION CONTAINED HEREIN, AND SAME IS SUBMITTED SUBJECT TO ERRORS, OMISSIONS, CHANGE OF PRICE, RENTAL OR OTHER CONDITIONS, WITHDRAWAL WITHOUT NOTICE, AND TO ANY SPECIAL LISTING CONDITIONS IMPOSED BY THE PROPERTY OWNER(S). ANY PROJECTIONS, OPINIONS OR ESTIMATES ARE SUBJECT TO UNCERTAINTY AND DO NOT SIGNIFY CURRENT OR FUTURE PROPERTY PERFORMANCE. *SALES REPRESENTATIVE