



7405 TRANSCANADIENNE SAINT-LAURENT (QUÉBEC)

BUREAU - À LOUER
OFFICE - FOR LEASE

JUSQU'À 17 500 PI. CA. - UP TO 17 500 SQ. FT.

- **Transport en commun accessible** | *Easy acces to public transport*
- **Stationnement intérieur** | *Indoor parking*
- **Restaurant intérieur** | *Indoor restaurant*
- **Près du centre d'achat place vertu** | *Next to the Place Vertu mall*
- **Excellente visibilité à partir de l'autoroute** | *Exellent visibility from the highway*

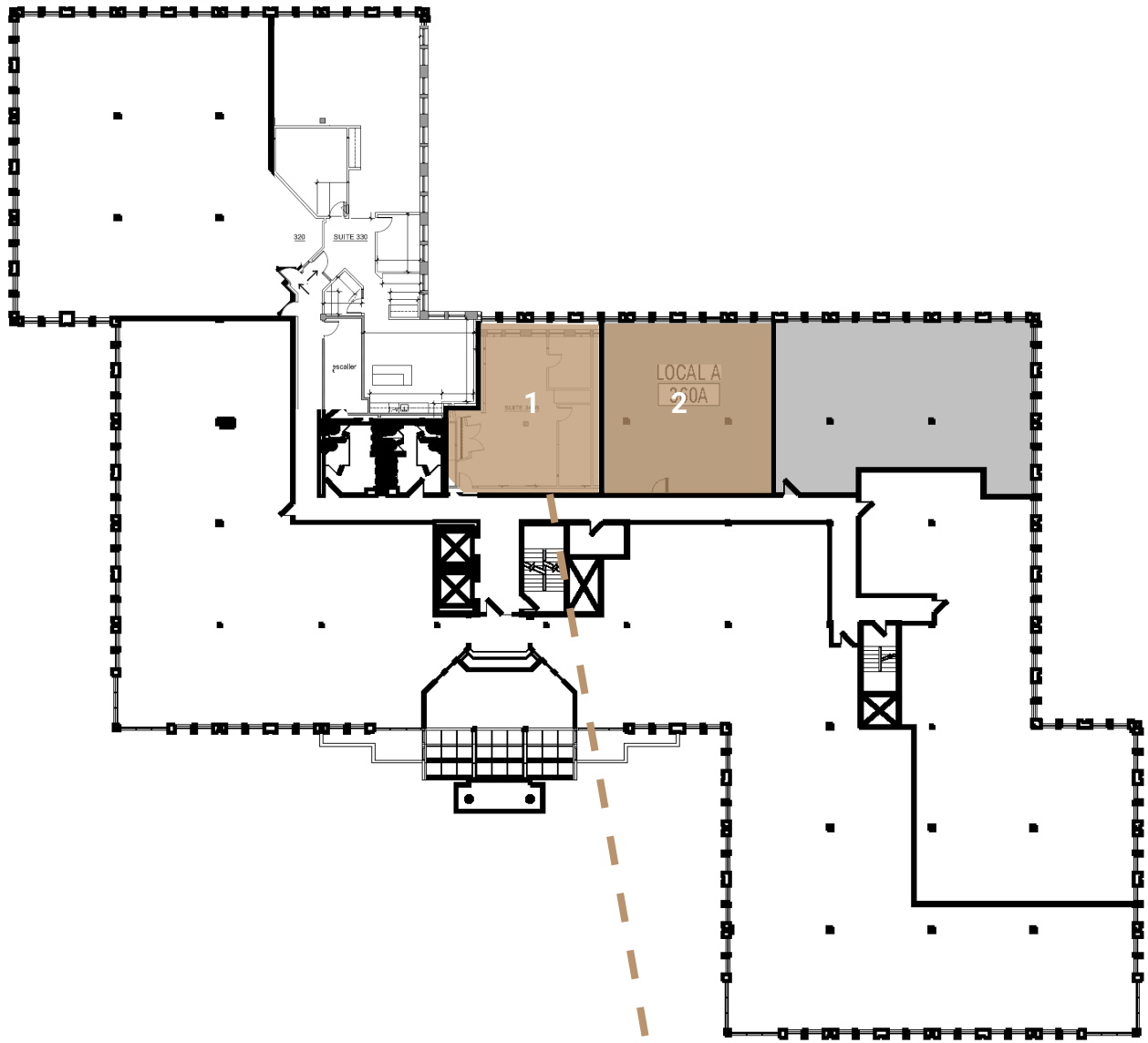


BRASSWATER

245, avenue Victoria,
Suite 801
Westmount, Qc | H3Z 2M6
T: +1 514 535 4444
www.brasswater.ca

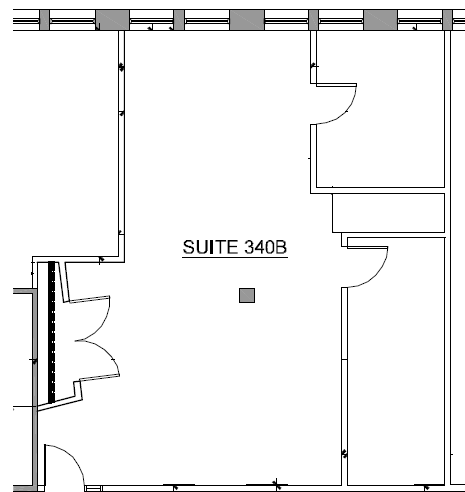


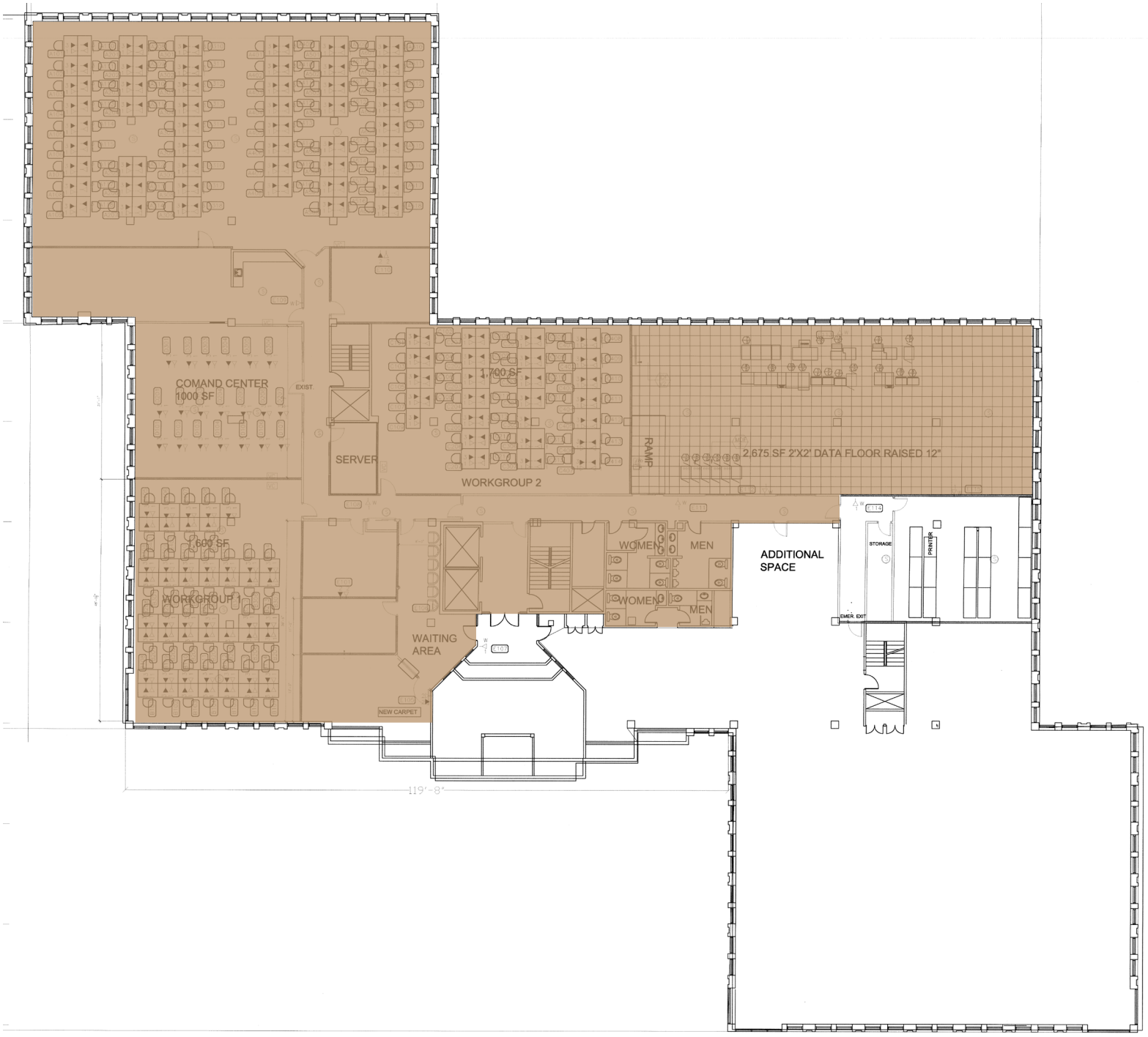
Zonage Zoning	Bureau Office
Surfaces disponibles (pi²) Available Areas (sq. ft.)	30 581
Étage Floor	4
Stationnement intérieur Interior Parking	28
Stationnement extérieur Exterior Parking	288



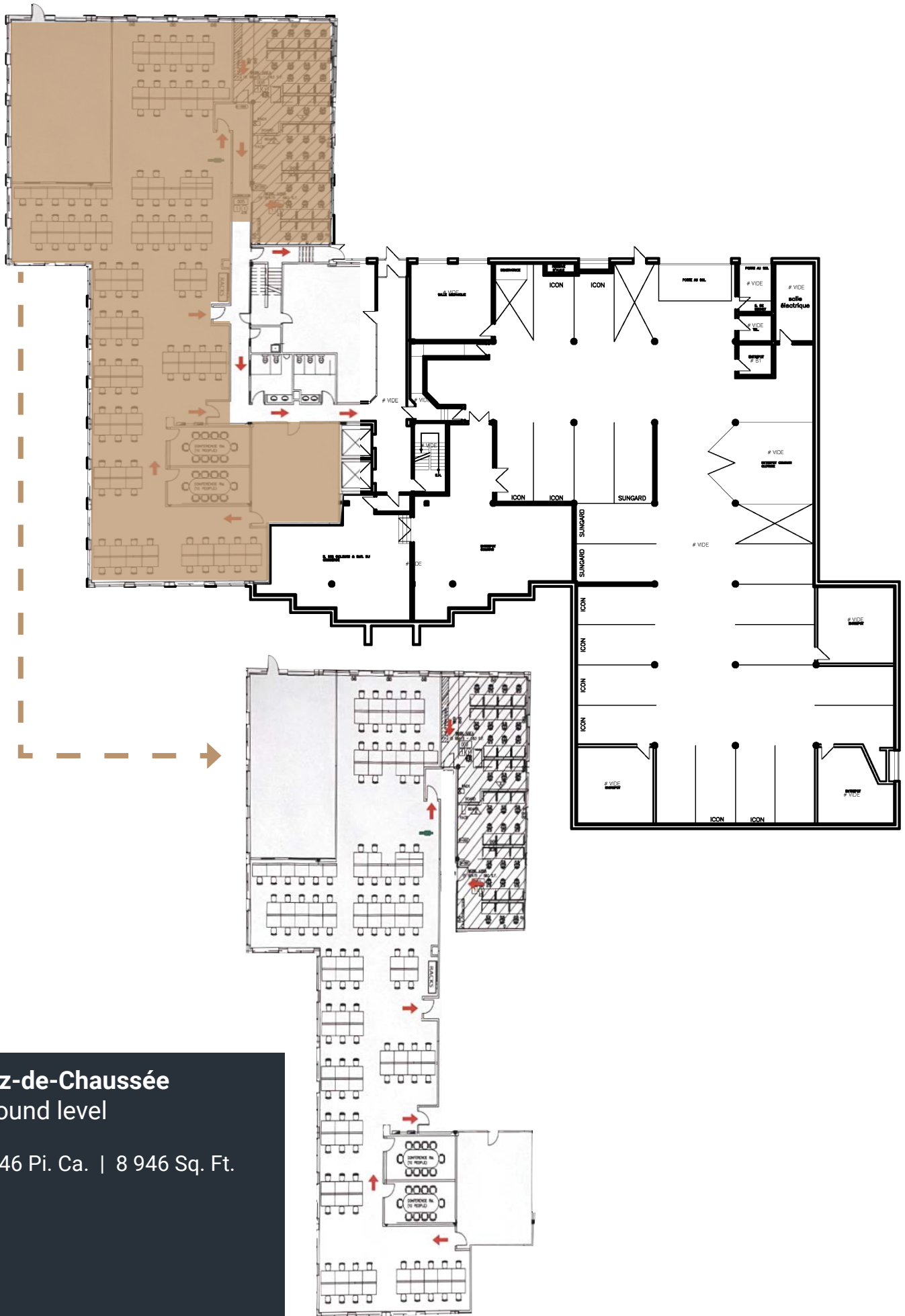
3em étage | 3rd floor

- 1 835 Pi. Ca. | 835 Sq. Ft.
- 2 1 085 Pi. Ca. | 1 085 Sq. Ft.





2em étage | 2nd floor
17 500 Pi. Ca. | 17 500 Sq. Ft.



Rez-de-Chaussée
Ground level

8 946 Pi. Ca. | 8 946 Sq. Ft.



CONTACTEZ-NOUS – CONTACT US

ÉQUIPE DE LOCATION LEASING TEAM

T: +1 514 535 4444
leasing@brasswater.ca

JORDAN ALTMAN

Agent a la location
Leasing Agent
T: +1 514 775 1234
jaltman@brasswater.ca

GIL KASTNER

Chef de la Direction Location & Développement des Affaires
Chief Leasing Director & Business Development Officer
T: + 514 592 5738
gkastner@brasswater.ca



BRASSWATER

245, avenue Victoria,
Suite 801
Westmount, Qc | H3Z 2M6
T: +1 514 535 4444
www.brasswater.ca