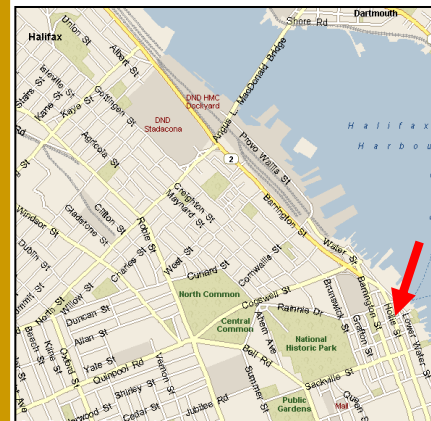


## Property

**5151 George Street  
Halifax, Nova Scotia**

## Available



Suite/Flr Number	Square Feet	Net Rental Rate	2020 Tax & Opex	Available
<b>Suite GL01</b>	<b>5,000</b>	<b>Call For Rates</b> Great location for restaurant		<b>Immediately</b>
<b>Suite 401</b>	<b>10,654</b>	<b>\$12.00</b> Landlord can demise	<b>\$15.21</b>	<b>Immediately</b>
<b>Suite 501</b>	<b>8,039</b>	<b>\$12.00</b> Landlord can demise	<b>\$15.21</b>	<b>Immediately</b>
<b>Suite 602</b>	<b>2,024</b>	<b>\$12.00</b>	<b>\$15.21</b>	<b>Immediately</b>
<b>Suite 901</b>	<b>10,663</b>	<b>\$12.00</b> Landlord can demise	<b>\$15.21</b>	<b>Immediately</b>
<b>Suite 1000</b>	<b>5,066</b>	<b>\$12.00</b> Landlord can demise	<b>\$15.21</b>	<b>Immediately</b>
<b>Suite 1501</b>	<b>10,661</b>	<b>\$12.00</b> Landlord can demise	<b>\$15.21</b>	<b>Immediately</b>
<b>Suite 1601</b>	<b>10,661</b>	<b>\$12.00</b> Landlord can demise	<b>\$15.21</b>	<b>Immediately</b>
<b>Building: 160,830 SF 17 Storeys</b>				

## Highlights

Located in downtown Halifax's Central Business District, 5151 George Street has much to offer prospective tenants:

- Convenient location with ready access to Halifax's waterfront, parking, public transit and ferry service
- Unobstructed views of Halifax Harbour
- On-site management office

DISCLAIMER: Info contained in this brochure is subject to substantiation or revision without notice. No liability is presumed by the Landlord or Compass for errors & omissions. Compass is licensed and operates in accordance with the Nova Scotia Real Estate Act. Compass represents the interests of the building owner, Robin Halifax Holdings Limited, as its broker. As such, prospective tenants are advised that they will be treated as a customer of Compass. Customers are encouraged to see independent counsel and advice in all matters related to real estate negotiations.

## Contact

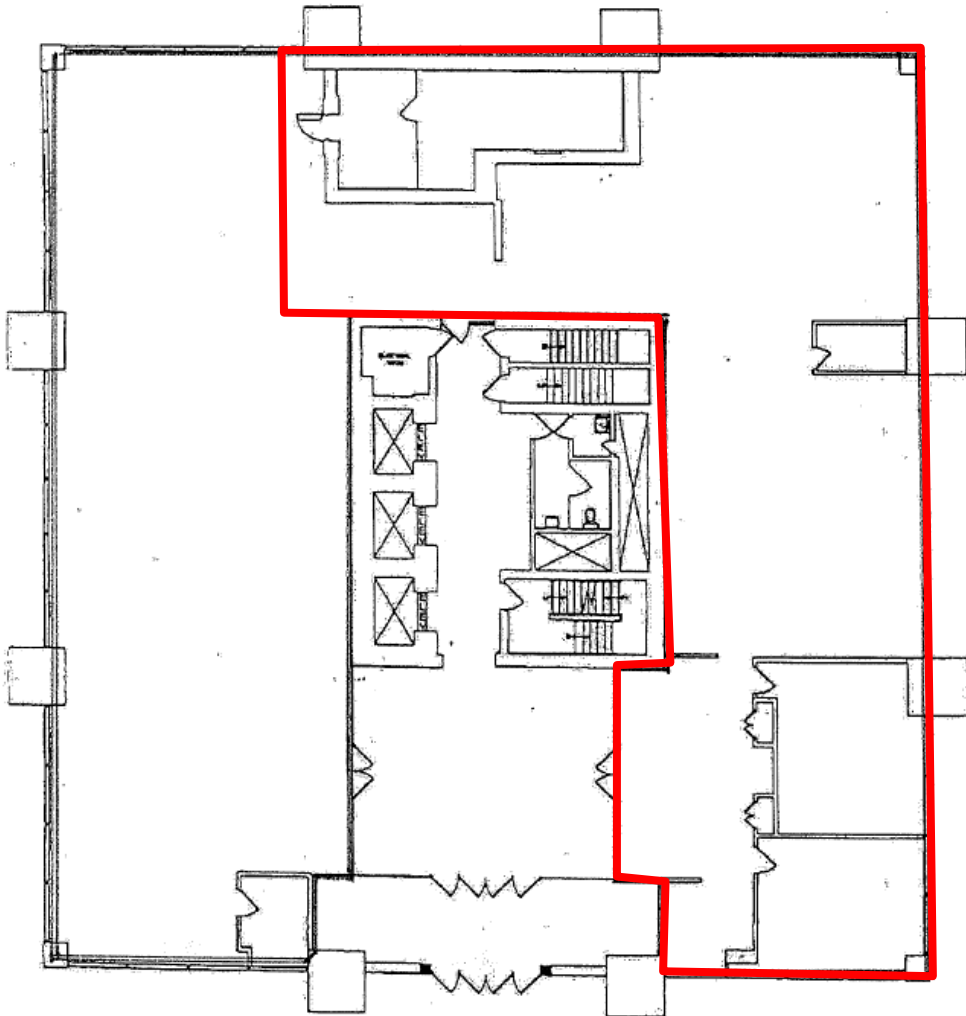
**Jonathan Hartlen**  
(902) 482-9201  
(902) 209-9619 cell  
jhartlen@compassbroker.com

**Suite 290 - 3 Spectacle Lake Dr.**  
**Dartmouth, NS B3B 1W8**  
**902.454.1234**  
**compassbroker.com**

**Additional**

Suite GL01  
+/- 5,000 SF

➤ Landlord can demise



## Contact

Jonathan Hartlen  
(902) 482-9201  
(902) 209-9619 cell  
jhartlen@compassbroker.com

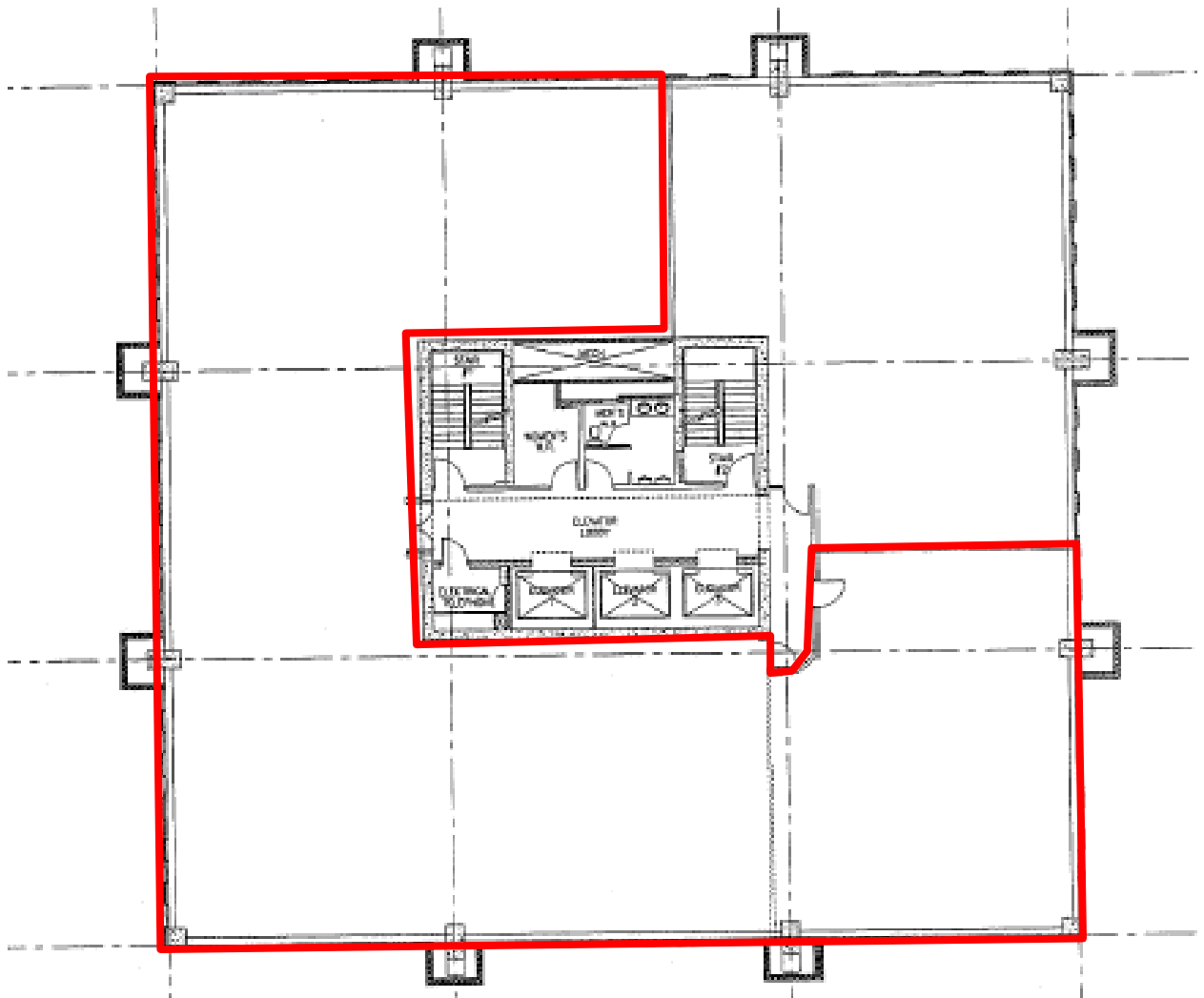
Suite 290 - 3 Spectacle Lake Dr.  
Dartmouth, NS B3B 1W8  
902.454.1234  
compassbroker.com



**Additional**

Suite 501  
+/- 8,039 SF

➤ Landlord can demise

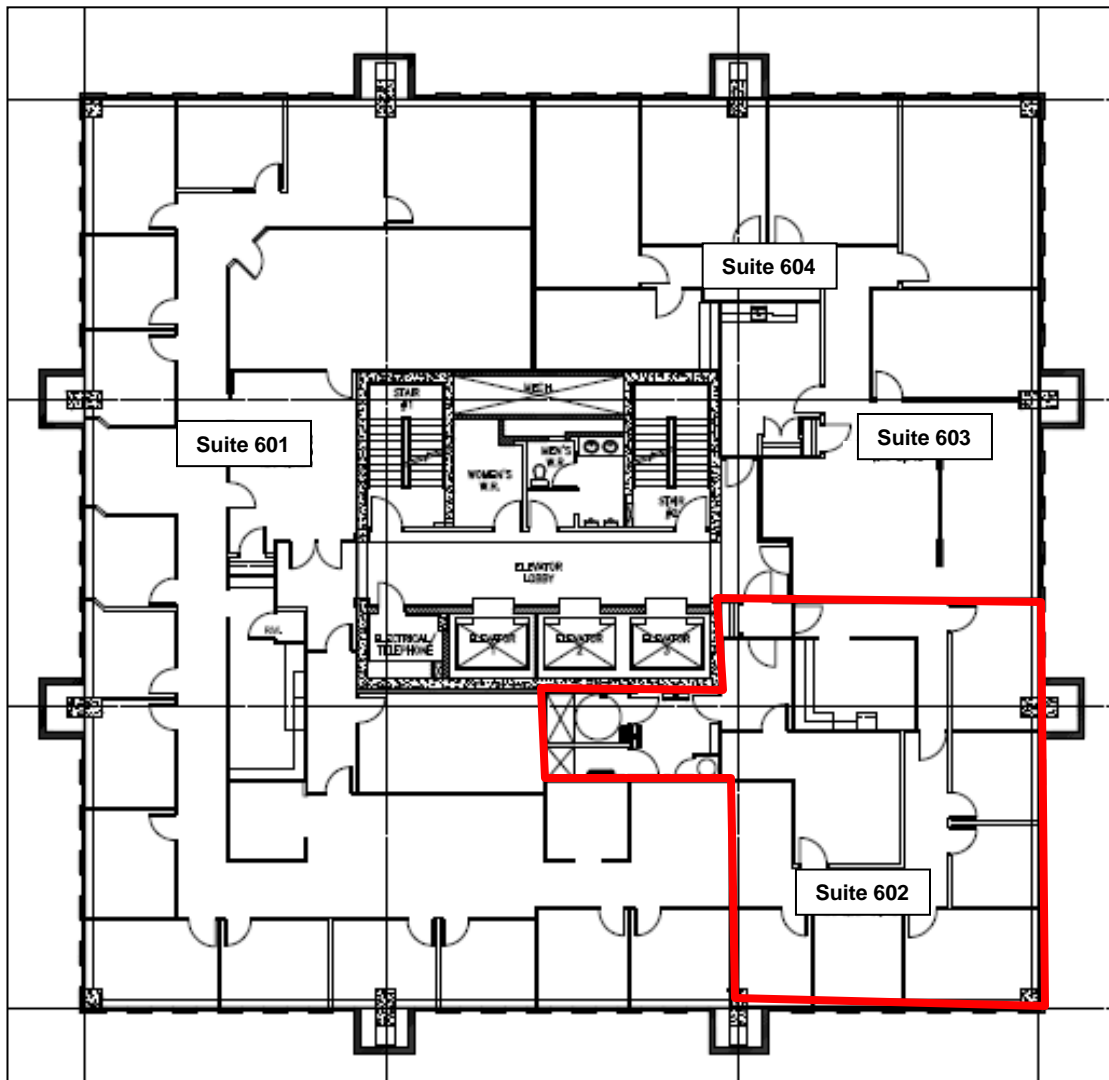


## Contact

Jonathan Hartlen  
(902) 482-9201  
(902) 209-9619 cell  
jhartlen@compassbroker.com

Suite 290 - 3 Spectacle Lake Dr.  
Dartmouth, NS B3B 1W8  
902.454.1234  
compassbroker.com

**Additional**



← Suite 602  
+/- 2,024 SF

- 8 offices
- Reception
- Showers
- Storage Room

## Contact

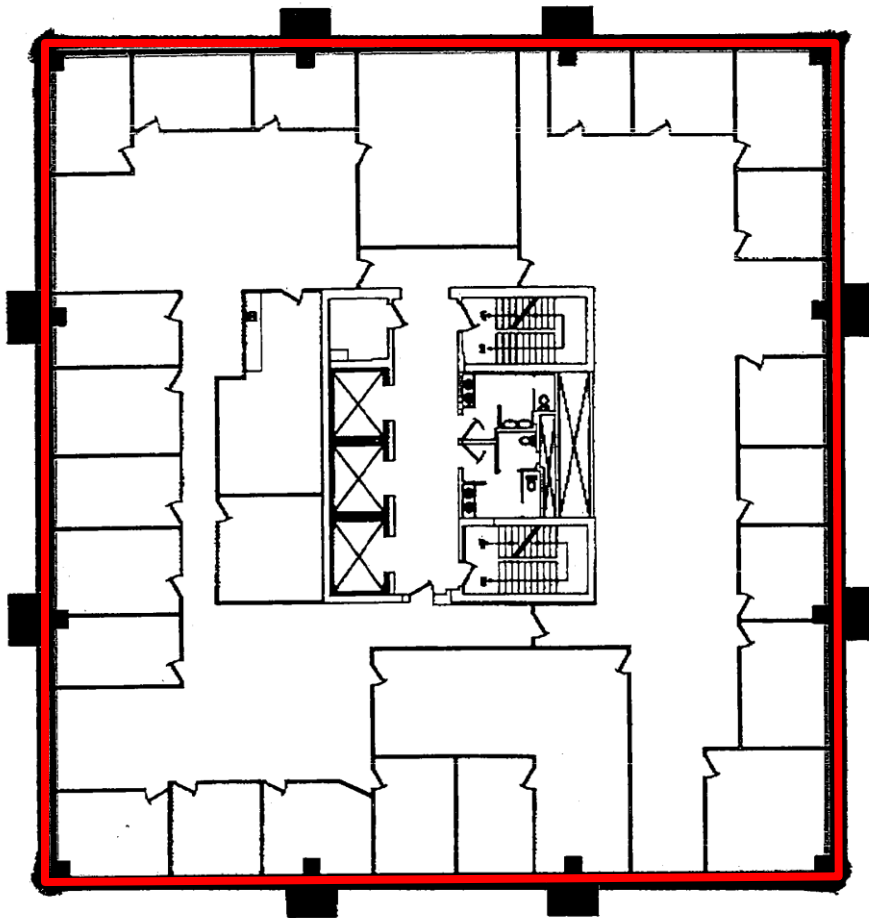
**Jonathan Hartlen**  
(902) 482-9201  
(902) 209-9619 cell  
jhartlen@compassbroker.com

**Suite 290 - 3 Spectacle Lake Dr.**  
**Dartmouth, NS B3B 1W8**  
902.454.1234  
compassbroker.com

**Additional**

Suite 901  
+/- 10,663 s.f.

➤ Landlord can demise



George Street  
9th Floor

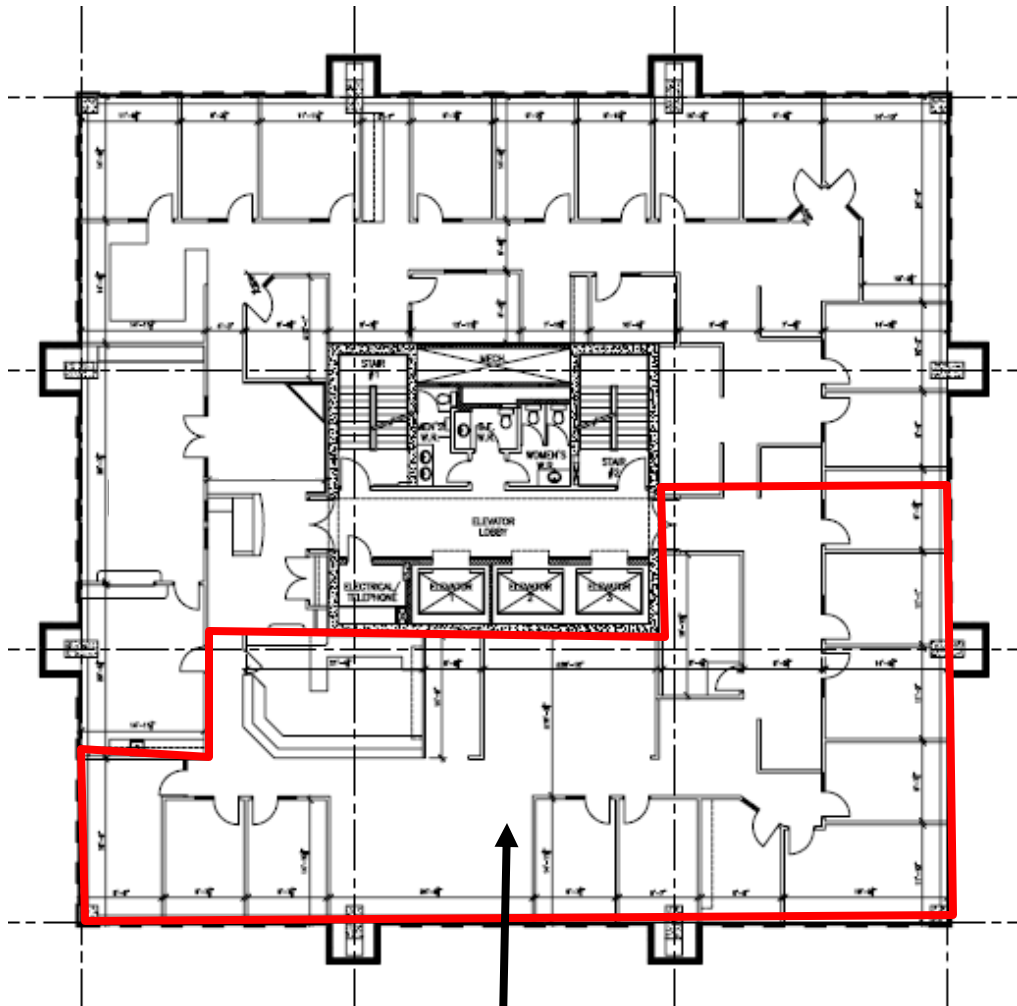
## Contact

Jonathan Hartlen  
(902) 482-9201  
(902) 209-9619 cell  
jhartlen@compassbroker.com

Suite 290 - 3 Spectacle Lake Dr.  
Dartmouth, NS B3B 1W8  
902.454.1234  
compassbroker.com



Additional



Suite 1000  
+/- 5,066 SF

- > Landlord can demise
- > Superior finishings
- > Professional office space

## Contact

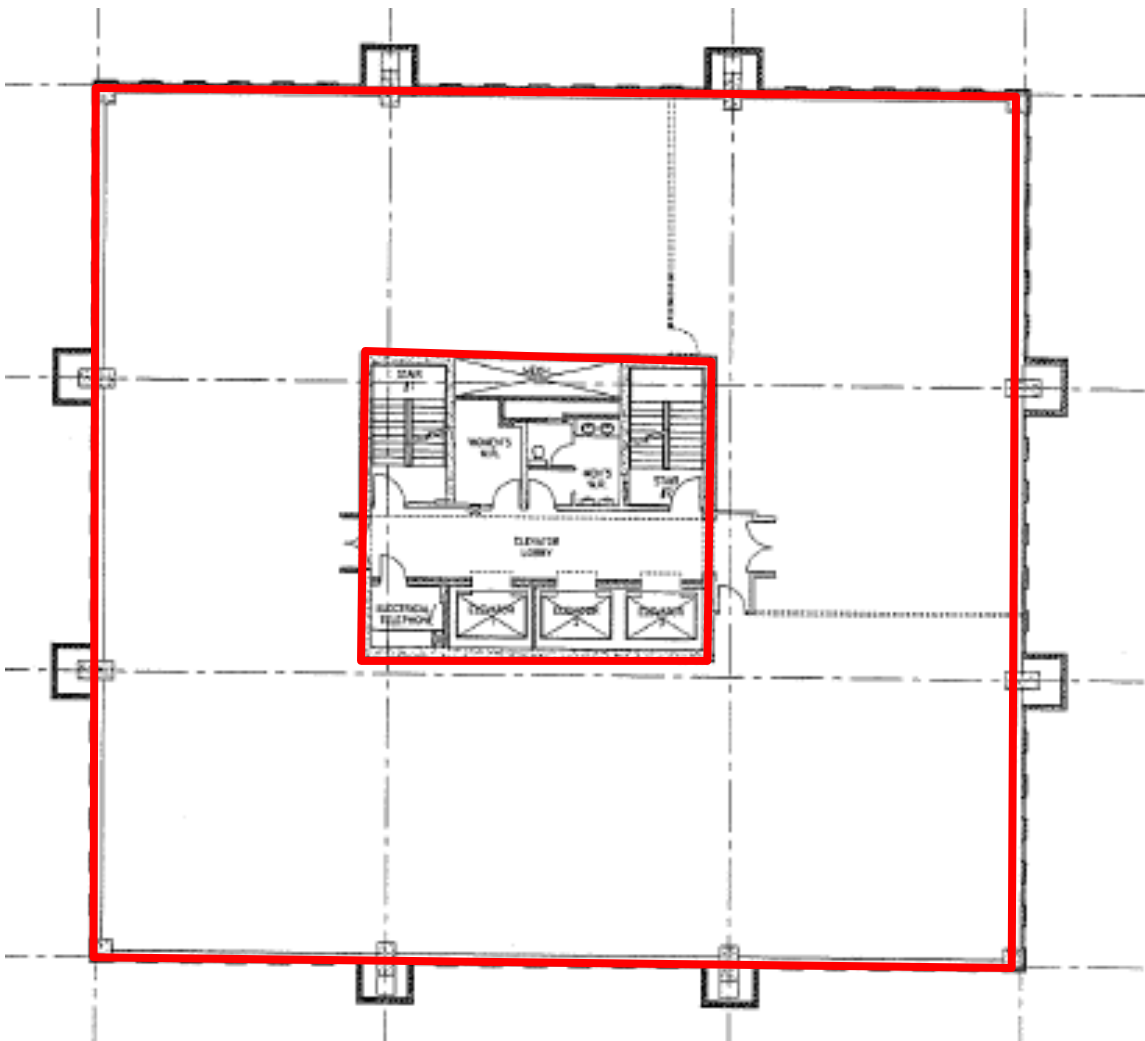
Jonathan Hartlen  
(902) 482-9201  
(902) 209-9619 cell  
jhartlen@compassbroker.com

Suite 290 - 3 Spectacle Lake Dr.  
Dartmouth, NS B3B 1W8  
902.454.1234  
compassbroker.com

**Additional**

Suite 1501  
+/- 10,661 s.f.

➤ Landlord can demise



## Contact

Jonathan Hartlen  
(902) 482-9201  
(902) 209-9619 cell  
jhartlen@compassbroker.com

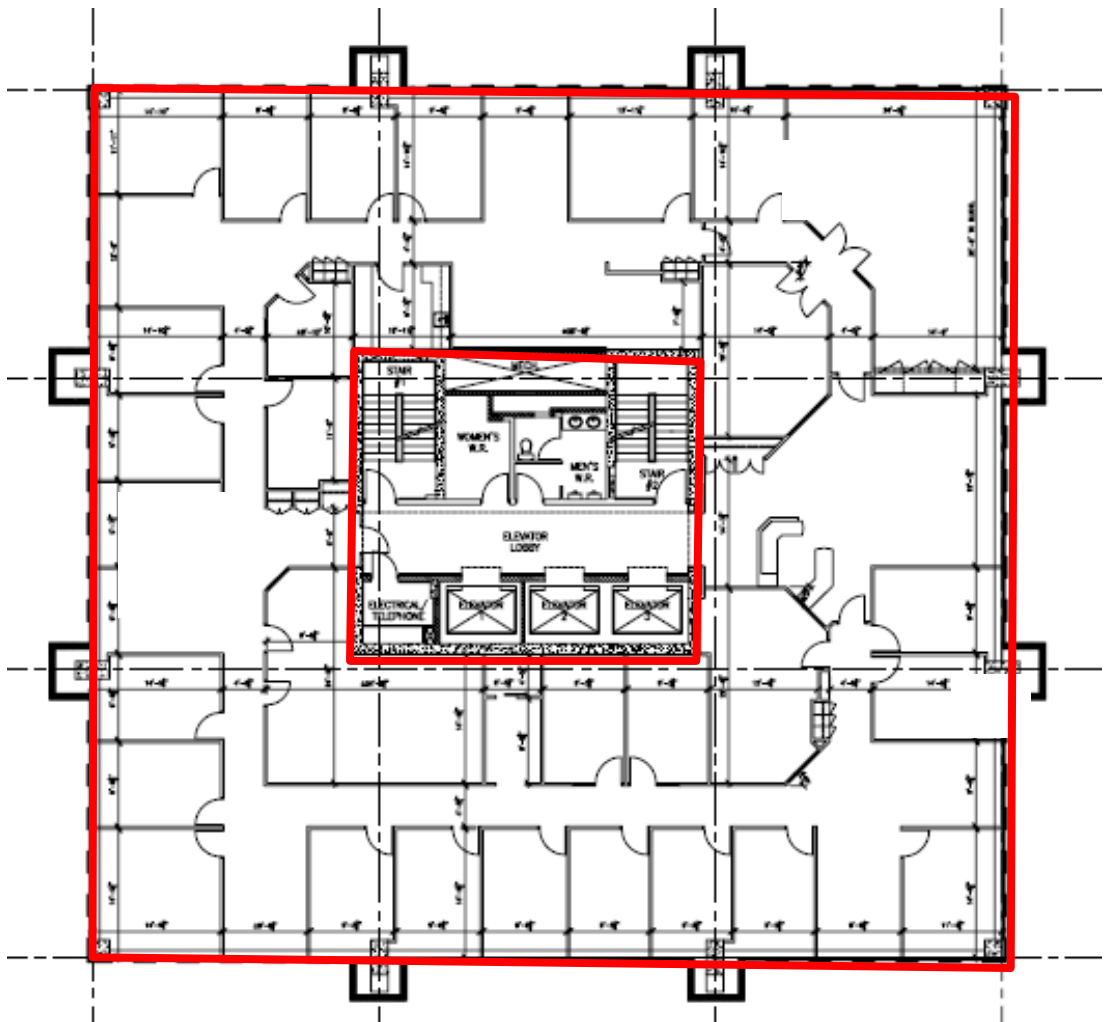
Suite 290 - 3 Spectacle Lake Dr.  
Dartmouth, NS B3B 1W8  
902.454.1234  
compassbroker.com



**Additional**

Suite 1601  
+/- 10,661 SF

➤ Landlord can demise



## Contact

Jonathan Hartlen  
(902) 482-9201  
(902) 209-9619 cell  
jhartlen@compassbroker.com

Suite 290 - 3 Spectacle Lake Dr.  
Dartmouth, NS B3B 1W8  
902.454.1234  
compassbroker.com