

Surrey Central Business Park

Proudly owned and
managed by:



BUILDING 4

7455 | **132ND STREET**
SURREY, BC

Nicolas Bilodeau, Senior Vice President
604 647 1336
nicolas.bilodeau@avisonyoung.com

Josh Sookero*, Principal
604 647 5091
josh.sookero@avisonyoung.com

*Josh Sookero Personal Real Estate Corporation

**AVISON
YOUNG**

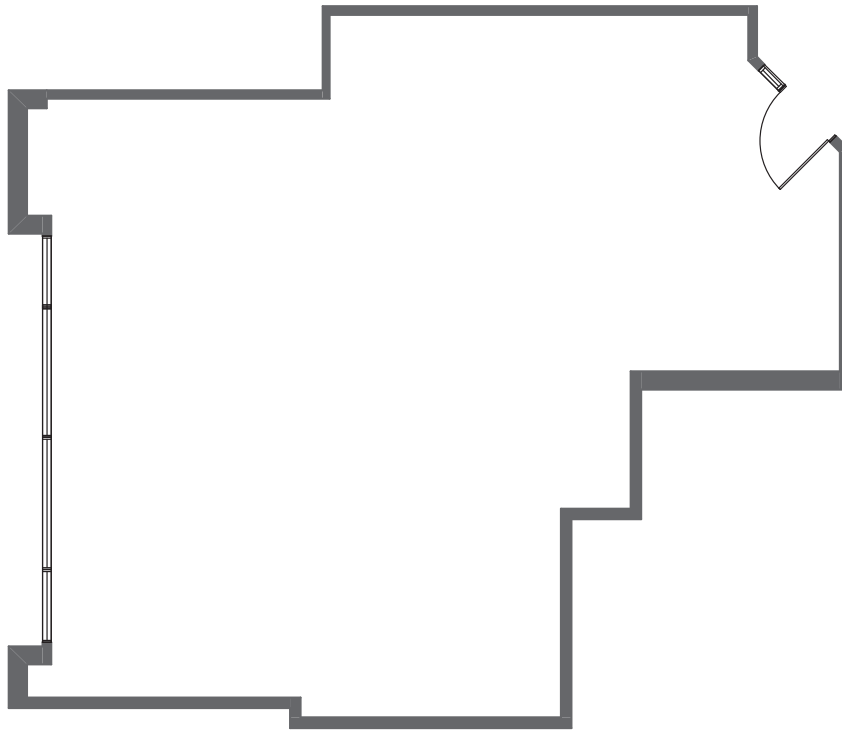


BUILDING 4

7455

132ND STREET
SURREY, BC

SUITE	AREA	AVAILABLE	OPERATION COSTS & TAXES (EST.)	CONDITION OF IMPROVEMENTS
103	1,017 sf	Immediately	16.36 psf	Existing improved open area.



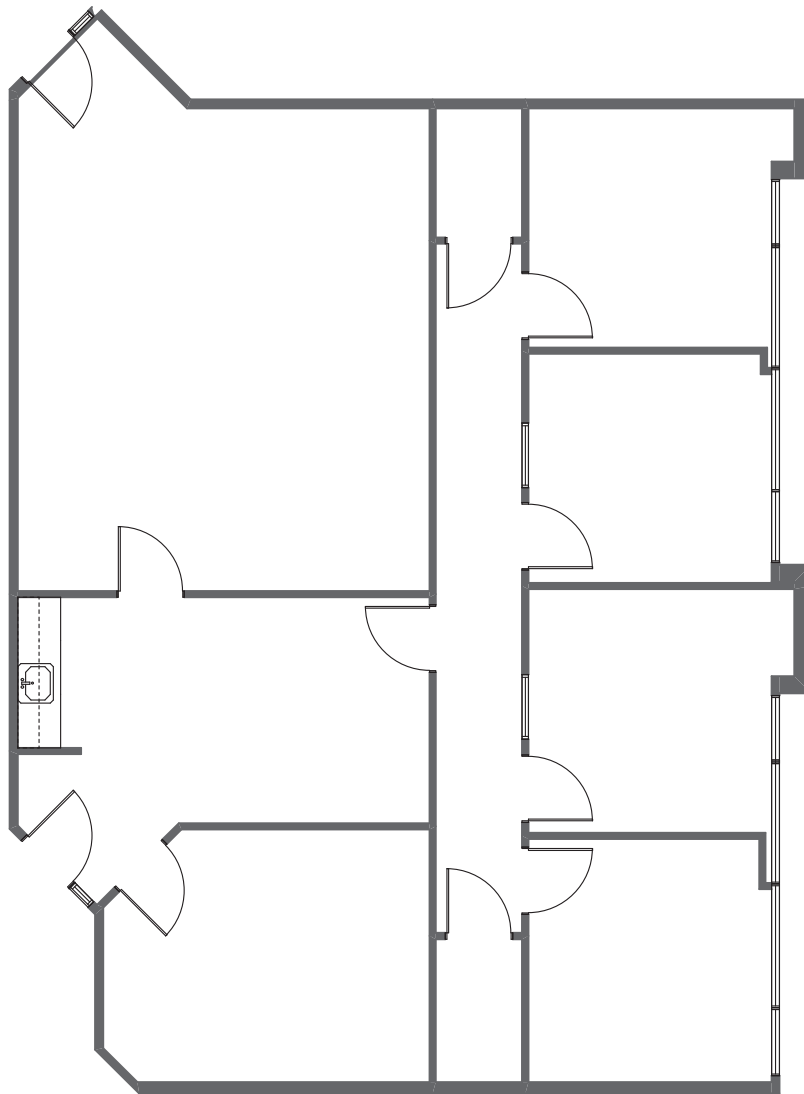


BUILDING 4

7455

132ND STREET
SURREY, BC

SUITE	AREA	AVAILABLE	OPERATION COSTS & TAXES (EST.)	CONDITION OF IMPROVEMENTS
108	1,920 sf	Immediately	16.36 psf	Five offices, boardroom, kitchenette, open area and storage





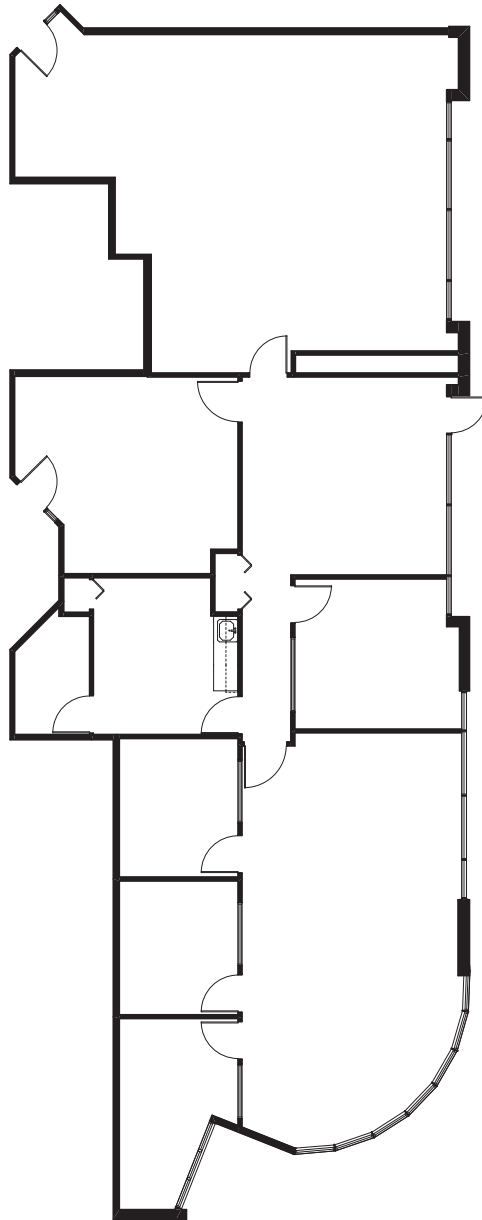
BUILDING 4

7455

132ND STREET
SURREY, BC

SUITE	AREA	AVAILABLE	OPERATION COSTS & TAXES (EST.)	CONDITION OF IMPROVEMENTS
-------	------	-----------	--------------------------------	---------------------------

110	3,356 sf	Immediately	16.36 psf	
-----	----------	-------------	-----------	--



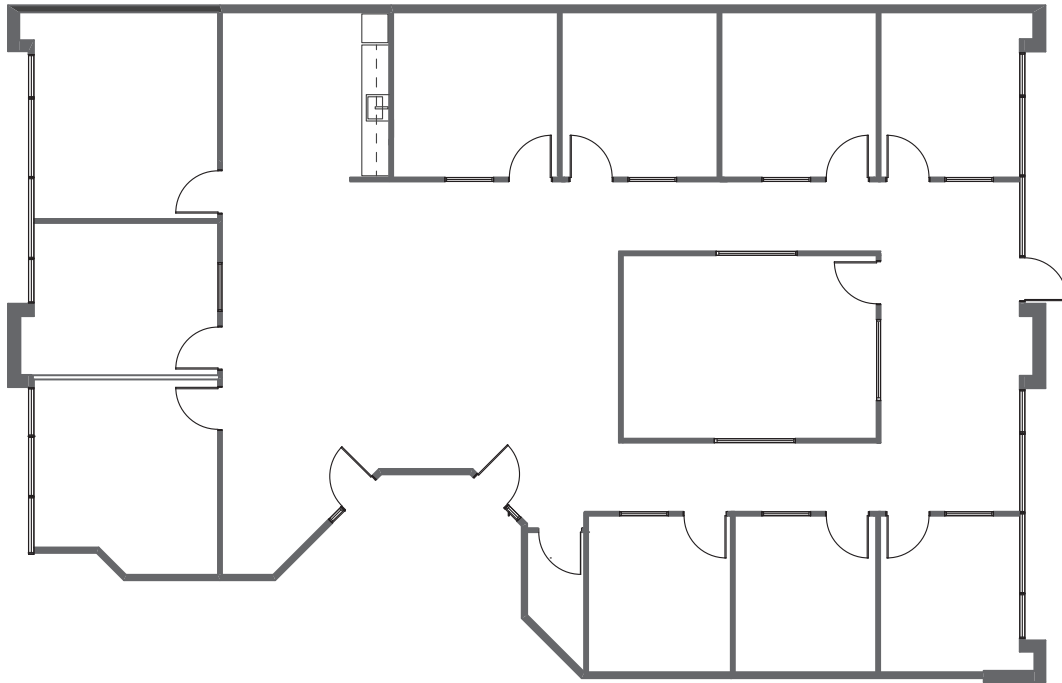


BUILDING 4

7455

132ND STREET
SURREY, BC

SUITE	AREA	AVAILABLE	OPERATION COSTS & TAXES (EST.)	CONDITION OF IMPROVEMENTS
113	3,688 sf	Immediately	16.36 psf	Nine offices, meeting room, kitchenette and open area





BUILDING 4

7455

132ND STREET
SURREY, BC

SUITE	AREA	AVAILABLE	OPERATION COSTS & TAXES (EST.)	CONDITION OF IMPROVEMENTS
207	2,024 sf	Dec 1, 2022	16.36 psf	Premises consists of 2 offices, kitchenette and open area.

