

Pilkington Building

402 11th Avenue SE
Calgary, AB



Property Highlights

PAGE 2

Local Amenities

PAGE 4

Local Area

PAGE 5

Floorplan

PAGE 6

STUART WATSON

Senior Vice President

stuart.watson@cbre.com

403 750 0540

KATIE SAPIEHA

Vice President

katie.sapieha@cbre.com

403 750 0529

MACKENZIE ALLEN

Sales Representative

mackenzie.allen@cbre.com

403 303 3608

ALLIED CBRE

Property Highlights

Calgary Heritage Authority officially recognized the Pilkington Building as a meaningful character building adding community value in 2001.

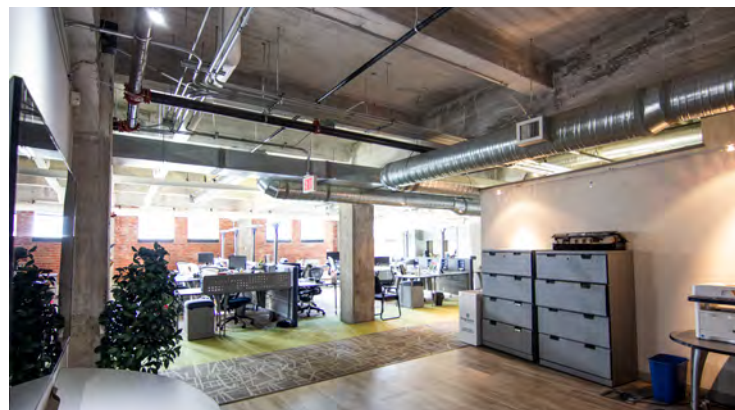
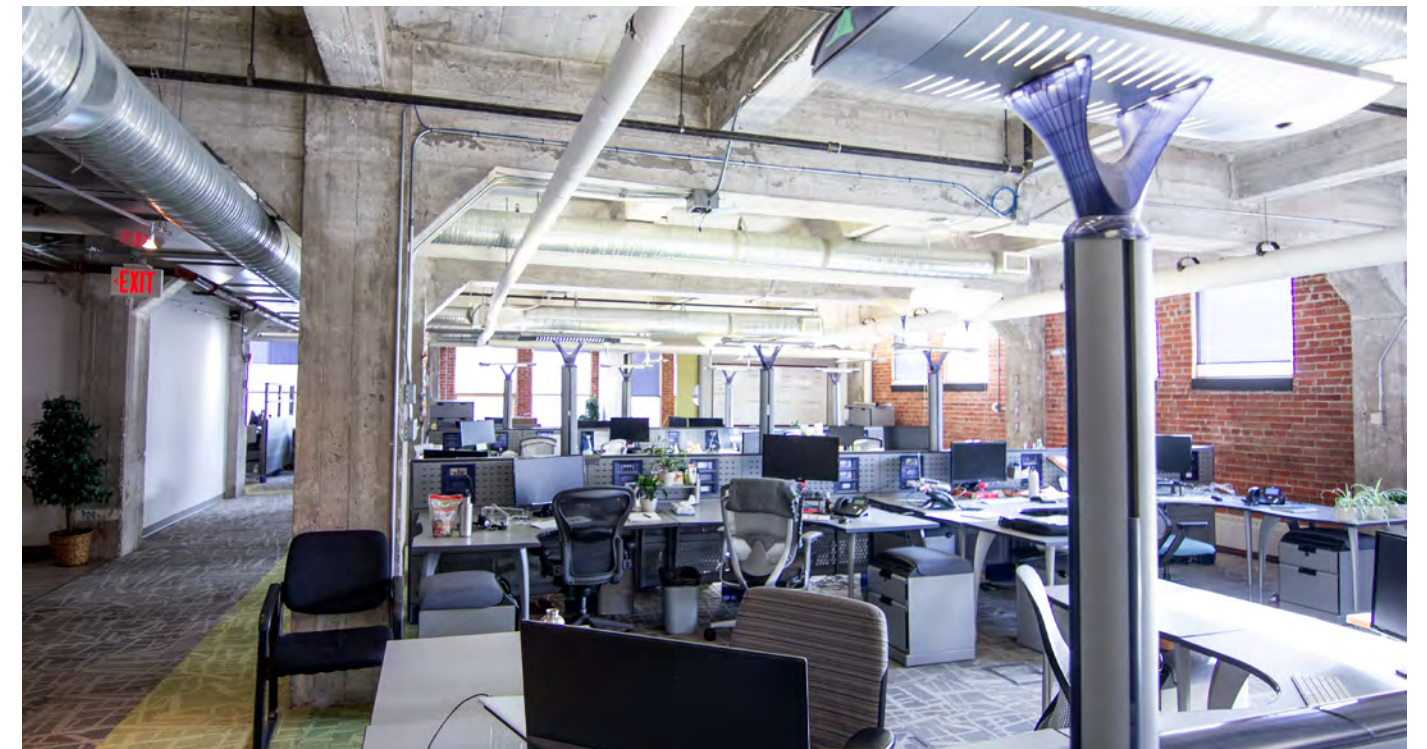
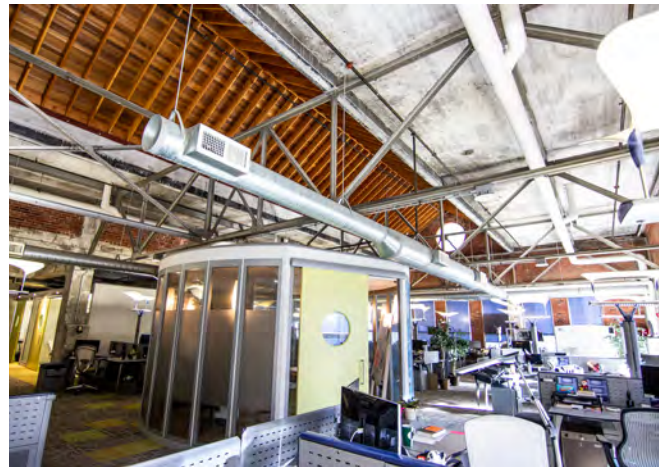
Originally constructed in 1913 for the Pilkington Bros. Paint & Glass Warehouse, a British firm specializing in the manufacturing of plate glass, occupied the building until 1967.

It is symbolic of Calgary's rise as a wholesale and distribution centre in the years before World War I. Constructed with solid, Medicine Hat brick on concrete, the building displays simplified classical details with more elaborate Tyndall stone decoration around the entrance to the office and display area.

In 2000, the building interior was completely renovated for use as an office building and is now part of the greater Allied Properties REIT portfolio.

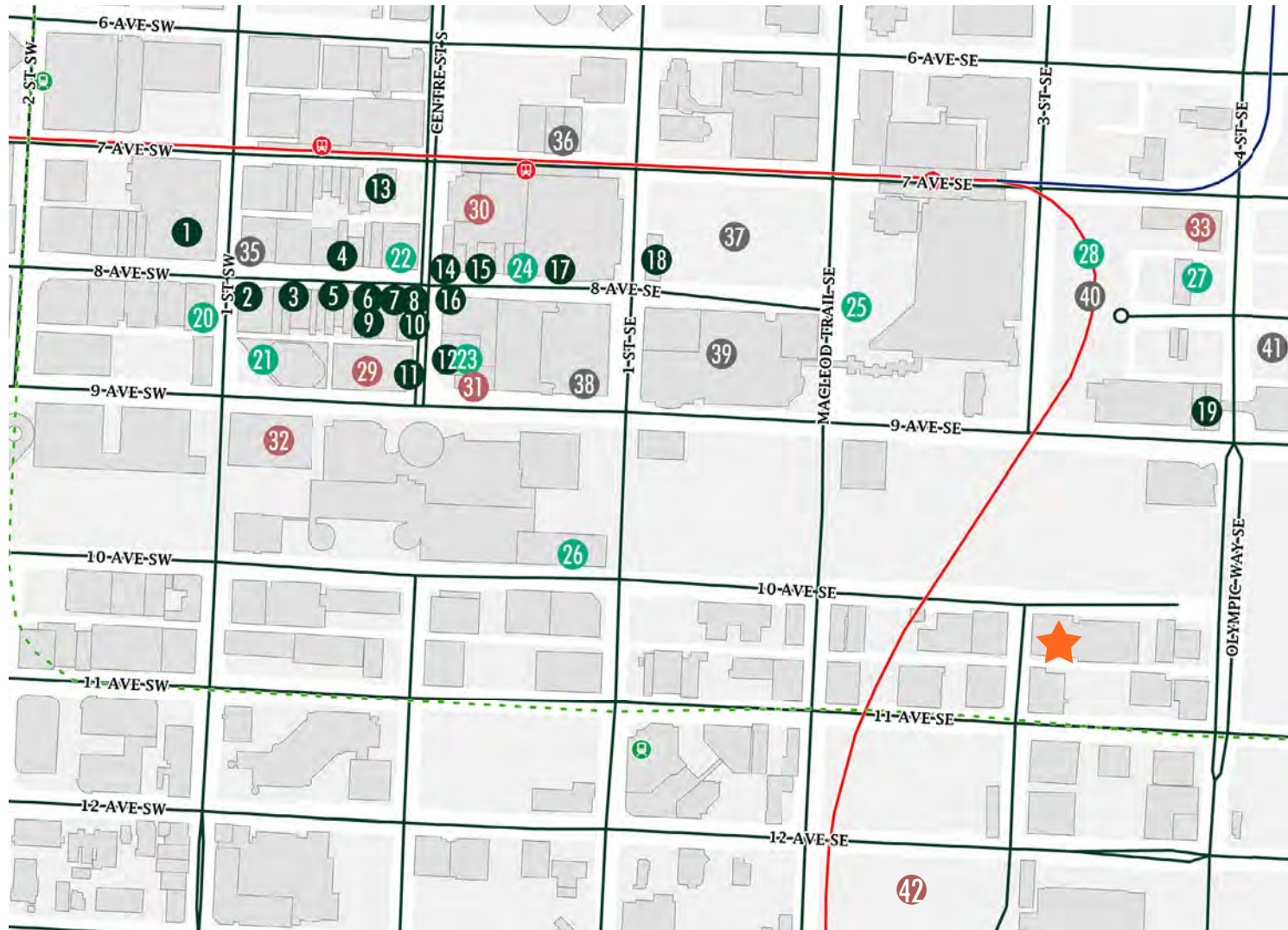


Rent	Market
Additional Rent	\$17.53 PSF
Area Available	400: 5,898 SF
Available	November 1, 2020
Parking	Surface parking at \$250/stall/month
Year Built	1913



- Access/egress via 11th Avenue and Macleod Trail SE
- Access to rooftop patio
- Walking distance to amenities including: Vagabond Calgary, Cardinale, Village Ice Cream, and Rosso Coffee Roasters
- Walking distance to the Downtown Core and City Hall LRT station

Local Amenities



RESTAURANTS

1. The Guild
2. Murrieta's West Coast Bar & Grill
3. Bank & Barron
4. The Wednesday Room
5. Klein/ Harris
6. Blink
7. Bar Annabelle
8. El Furniture Warehouse
9. Original Joes
10. SALTNIK
11. Charcut
12. ONE18 Empire
13. Palomino Smokehouse
14. Modern Steak/ Modern Ocean
15. Thomsons
16. Milestones

17. Centini
18. Teatro
19. King Eddy

CAFES

20. Deville
21. MobSquad Cafe
22. Phil & Sebastians
23. Starbucks
24. Rosso
25. GoodEarth Coffeehouse
26. Waves Coffee House
27. Tim Hortons
28. Lukes

HOTELS

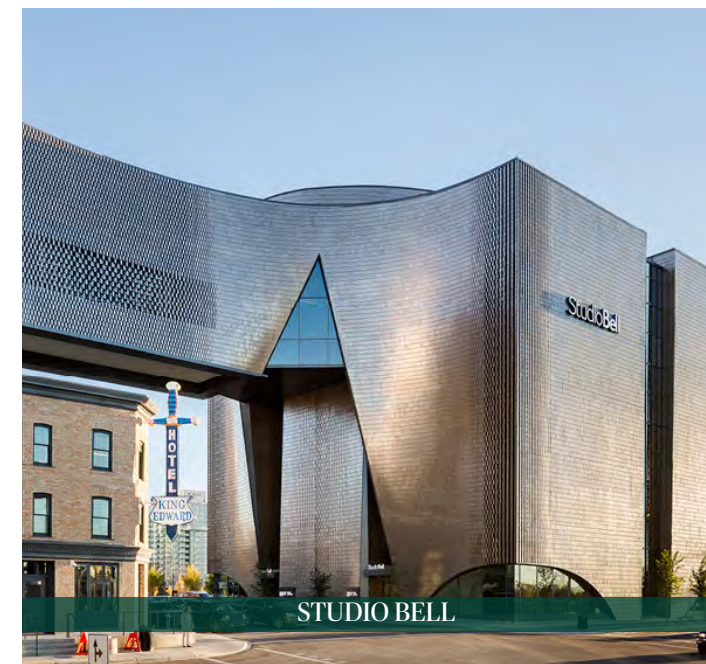
29. Le Germain Hotel

30. Hyatt Regency
31. Marriott Downtown Hotel
32. Fairmont Palliser
33. Hilton Garden Inn

OTHER

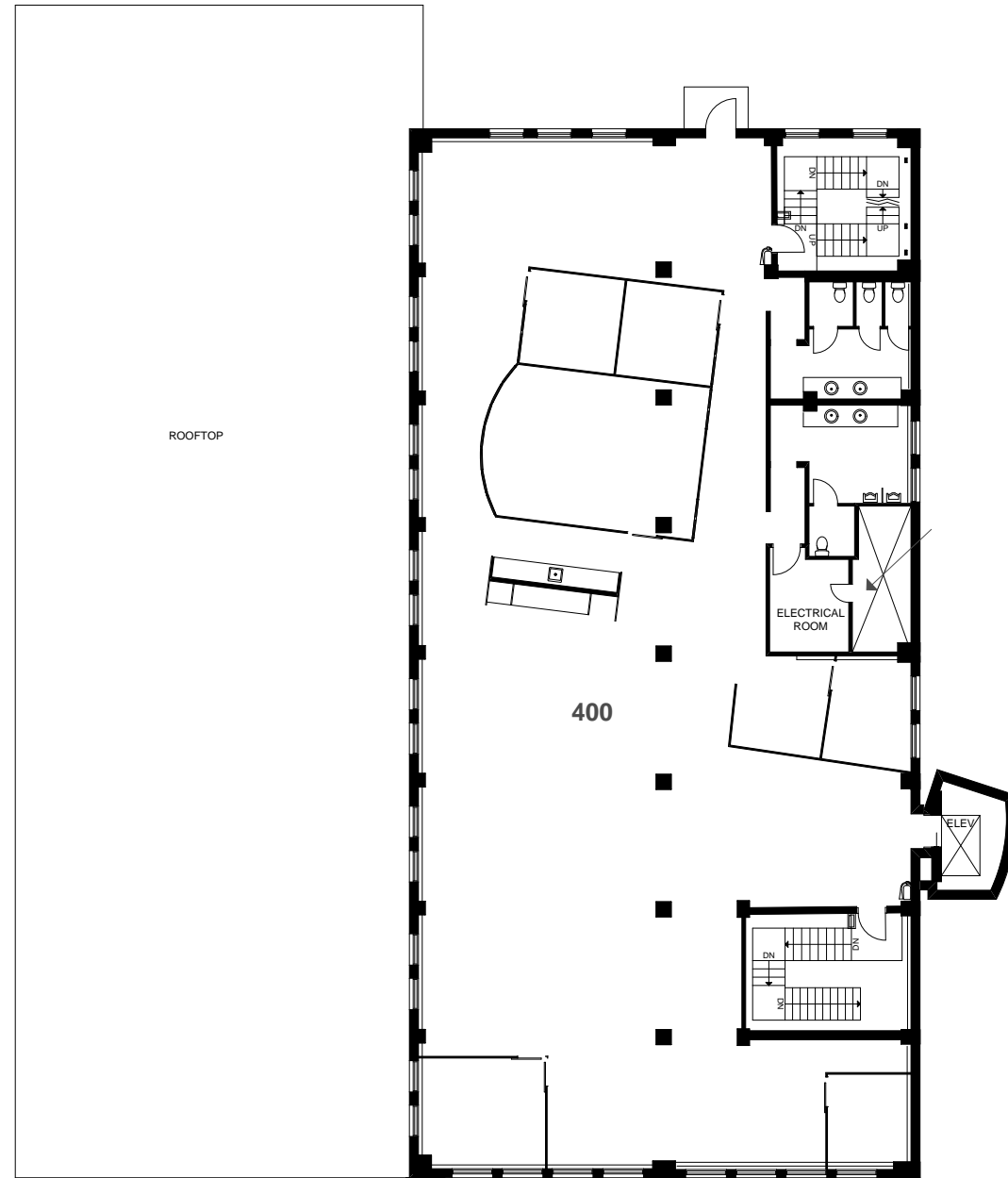
34. The CORE Shopping Centre
35. GoodLife Fitness
36. Cityscape Crossfit
37. Olympic Plaza
38. TELUS Convention Centre
39. Arts Commons
40. Central Library
41. Studio Bell
42. Stampede Grounds/ Saddledome

The Pilkington Building is a classic mercantile structure that has stood near the east end of the warehouse district contributing significantly to the community's character.



Floorplan Suite 400

5,898 SF



ALLIED **CBRE**

STUART WATSON
Senior Vice President
stuart.watson@cbre.com
403 750 0540

KATIE SAPIEHA
Vice President
katie.sapieha@cbre.com
403 750 0529

MACKENZIE ALLEN
Sales Representative
mackenzie.allen@cbre.com
403 303 3608

This disclaimer shall apply to CBRE Limited, Real Estate Brokerage, and to all other divisions of the Corporation; to include all employees and independent contractors ("CBRE"). The information set out herein, including, without limitation, any projections, images, opinions, assumptions and estimates obtained from third parties (the "Information") has not been verified by CBRE, and CBRE does not represent, warrant or guarantee the accuracy, correctness and completeness of the Information. CBRE does not accept or assume any responsibility or liability, direct or consequential, for the Information or the recipient's reliance upon the Information. The recipient of the Information should take such steps as the recipient may deem necessary to verify the Information prior to placing any reliance upon the Information. The Information may change and any property described in the Information may be withdrawn from the market at any time without notice or obligation to the recipient from CBRE. CBRE and the CBRE logo are the service marks of CBRE Limited and/or its affiliated or related companies in other countries. All other marks displayed on this document are the property of their respective owners. All Rights Reserved.