

WELL CONFIGURED UNIT WITH DRIVE-IN SHIPPING

FOR LEASE



# 1104 Fewster Drive | Units 10-11 Mississauga, ON

**Jeff Hord\***

Senior Vice President  
416 798 6258  
jeff.hord@cbre.com

**Kylie Rajic**

Sales Representative  
416 798 6253  
kylie.rajic@cbre.com

**CBRE**





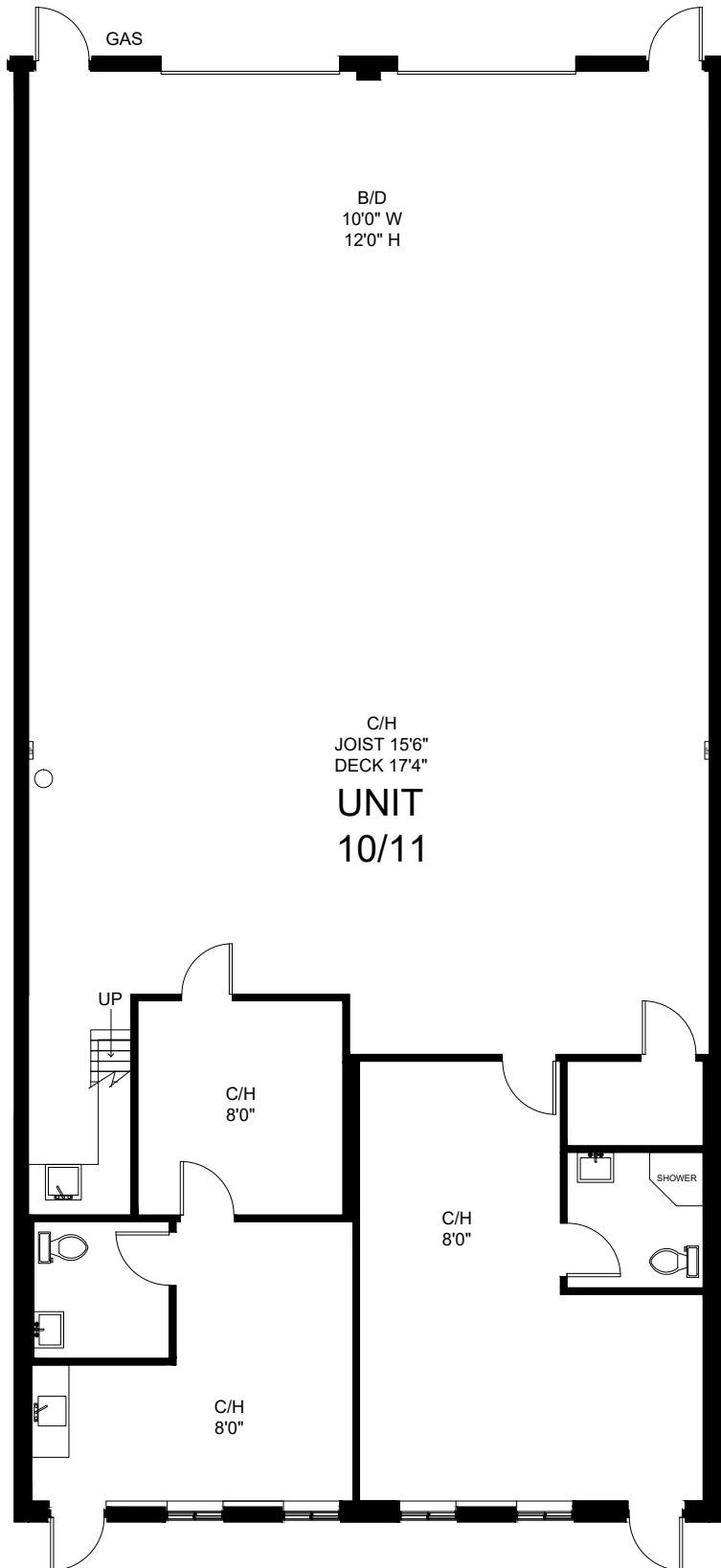
## PROPERTY DETAILS

<b>SIZE</b>	3,278 Sq. Ft
<b>OFFICE</b>	30 %
<b>CLEAR HEIGHT</b>	15'6"
<b>SHIPPING</b>	2 D/I
<b>HEAT</b>	Gas Forced Air Open
<b>POSSESSION</b>	April 1, 2024
<b>NET RENT</b>	\$17.95 Per Sq. Ft.
<b>TMI (2024)</b>	\$4.75 Per Sq. Ft.

### COMMENTS

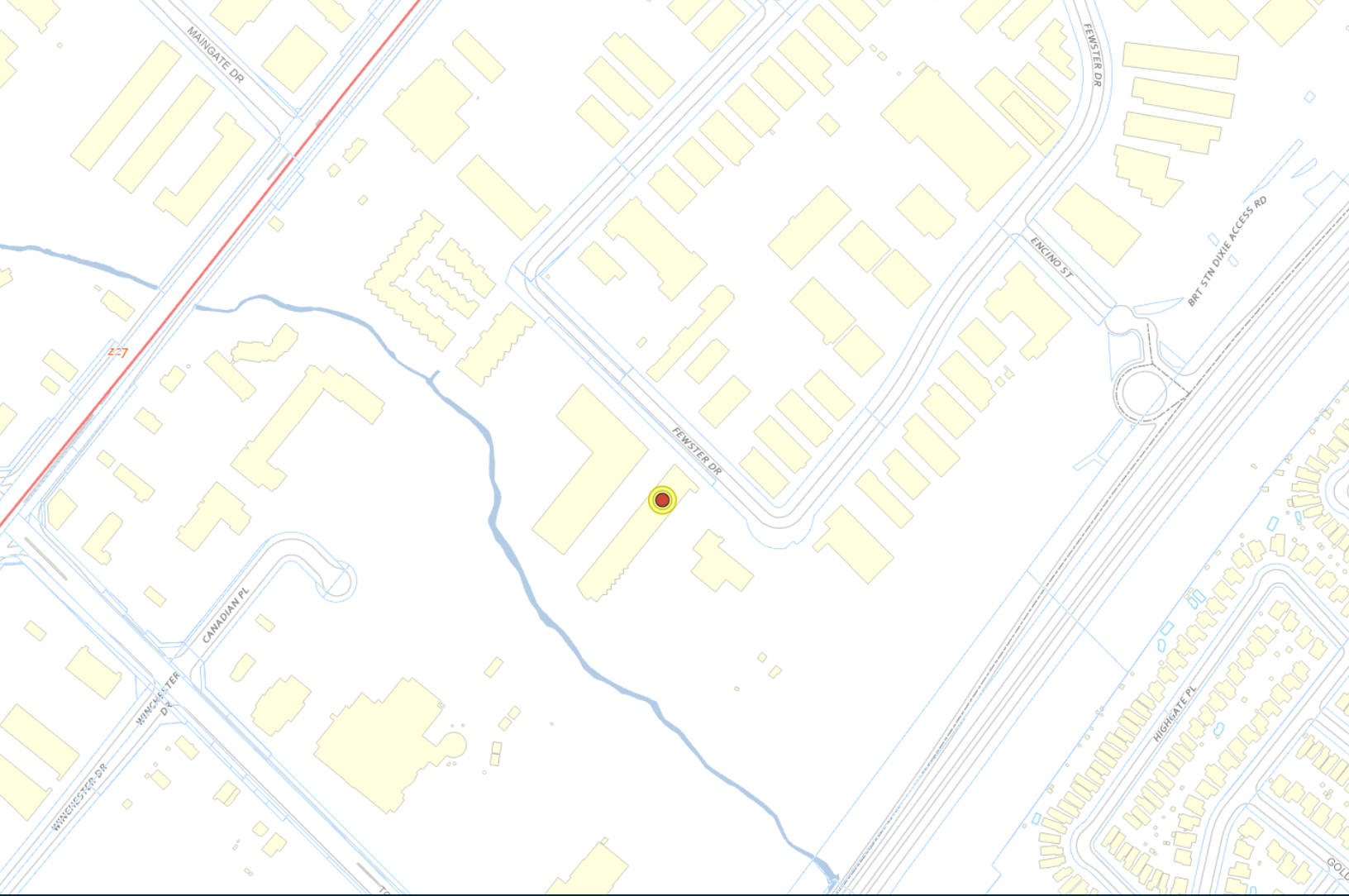
- Well configured small bay unit in professionally managed complex
- Drive-in doors are 10'5" wide x 12' tall
- Ideally suited for a variety of tenants including warehousing and light manufacturing
- Earlier possession possible, speak to listing team
- No automotive uses, recreational uses, or places of worship permitted by the Landlord

# FLOOR PLAN



Floor Plan May Not Be 100% Accurate



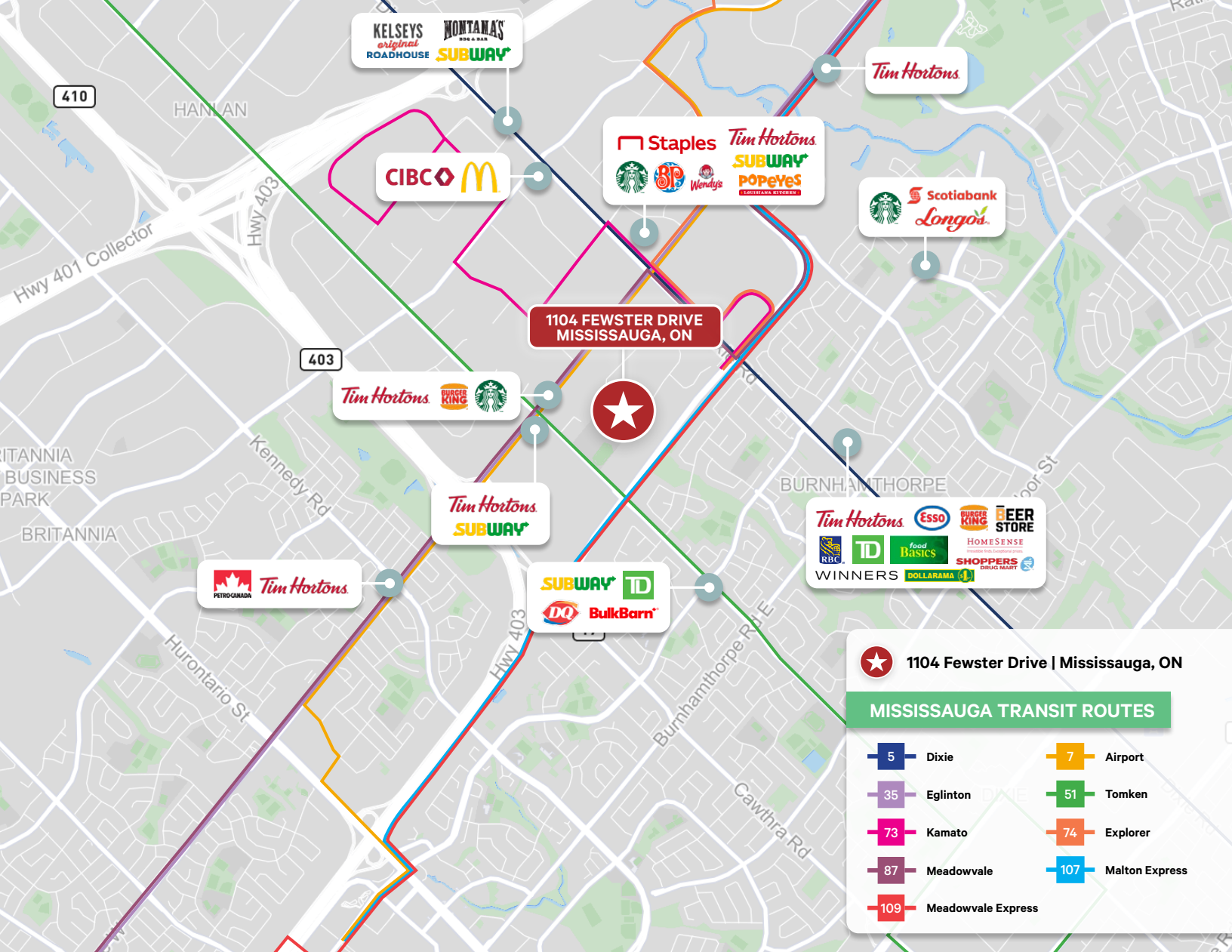


# PROPERTY ZONING

## E2 Permitted Uses<sup>(1)</sup>:

Click [HERE](#) For More Zoning Information

- » Medical Office
- » Office
- » Broad casting/Communication Facility
- » Manufacturing Facility
- » Science and Technology Facility
- » Truck Terminal
- » Warehouse/Distribution Facility
- » Wholesaling Facility
- » Waste Processing Station
- » Waste Transfer Station
- » Self Storage Facility
- » Contractor Service Shop
- » Medicinal Product Manufacturing Facility
- » Medicinal Product Manufacturing Facility - Restricted
- » Plant-Based Manufacturing Facility
- » Restaurant
- » Convenience Restaurant
- » Take-out Restaurant
- » Commercial School
- » Financial Institution
- » Veterinary Clinic
- » Animal Care Establishment
- » Motor Vehicle Repair Facility - Restricted
- » Motor Vehicle Rental Facility
- » Motor Vehicle Wash Facility - Restricted
- » Gas Bar
- » Motor Vehicle Service Station
- » Motor Vehicle Sales, Leasing and/ or Rental Facility - Commercial Motor Vehicles
- » Banquet Hall/Conference Centre/ Convention Centre
- » Night Club
- » Overnight Accommodation
- » Adult Video Store
- » Adult Entertainment Establishment
- » Animal Boarding Establishment
- » Active Recreational Use
- » Body-Rub Establishment
- » Truck Fuel Dispensing Facility
- » Entertainment Establishment
- » Recreational Establishment
- » Funeral Establishment
- » Private Club
- » Repair Establishment
- » Parking Lot
- » University/College
- » Courier/Messenger Service



**★ 1104 Fewster Drive | Mississauga, ON**

**MISSISSAUGA TRANSIT ROUTES**

<b>5</b> - Dixie	<b>7</b> - Airport
<b>35</b> - Eglinton	<b>51</b> - Tomken
<b>73</b> - Kamato	<b>74</b> - Explorer
<b>87</b> - Meadowvale	<b>107</b> - Malton Express
<b>109</b> - Meadowvale Express	

# 1104 FEWSTER DR, UNITS 10-11, MISSISSAUGA, ON

## Contact Us

**Jeff Hord\***  
 Senior Vice President  
 +1 416 798 6258  
 jeff.hord@cbre.com

**Kylie Rajic**  
 Sales Representative  
 +1 416 798 6253  
 kylie.rajic@cbre.com

5935 Airport Road, Suite 700, Mississauga, ON L4V 1W5 | \*Sales Representative

This disclaimer shall apply to CBRE Limited, Real Estate Brokerage, and to all other divisions of the Corporation; to include all employees and independent contractors ("CBRE"). All references to CBRE Limited herein shall be deemed to include CBRE, Inc. The information set out herein, including, without limitation, any projections, images, opinions, assumptions and estimates obtained from third parties (the "Information") has not been verified by CBRE, and CBRE does not represent, warrant or guarantee the accuracy, correctness and completeness of the Information. CBRE does not accept or assume any responsibility or liability, direct or consequential, for the Information or the recipient's reliance upon the Information. The recipient of the Information should take such steps as the recipient may deem necessary to verify the Information prior to placing any reliance upon the Information. The Information may change and any property described in the Information may be withdrawn from the market at any time without notice or obligation to the recipient from CBRE. CBRE and the CBRE logo are the service marks of CBRE Limited and/or its affiliated or related companies in other countries. All other marks displayed on this document are the property of their respective owners. All Rights Reserved. Mapping Sources: Canadian Mapping Services canadamapping@cbre.com; DMTI Spatial, Environics Analytics, Microsoft Bing, Google Earth

