

# For Lease

---



## 2390 Drew Road Unit 1, Mississauga

---

±30,225 Sq. Ft. | Available Immediately

---

**PHILLIP CHEUNG\***  
Executive Vice President  
416 798 6243  
phillip.cheung@cbre.com

**CARLEY WILLIAMSON**  
Sales Representative  
416 798 6276  
carley.williamson@cbre.com

**EVAN S. WHITE\***  
Vice Chairman  
416 798 6232  
evan.white@cbre.com

**CBRE**  
\*Sales Representative



# Property Details

LOCATION	Drew Road & Torbram Road
BUILDING SIZE	±30,225 Sq. Ft. (±10% Office)
ASKING RATE	\$18.50 Per Sq. Ft. Net
T.M.I. (EST. 2024)	\$4.50 Per Sq. Ft.
SHIPPING	5 Truck Level Doors 1 Drive-In Door (Oversized)
CLEAR HEIGHT	±18'
ZONING	E2
POSSESSION	Immediate

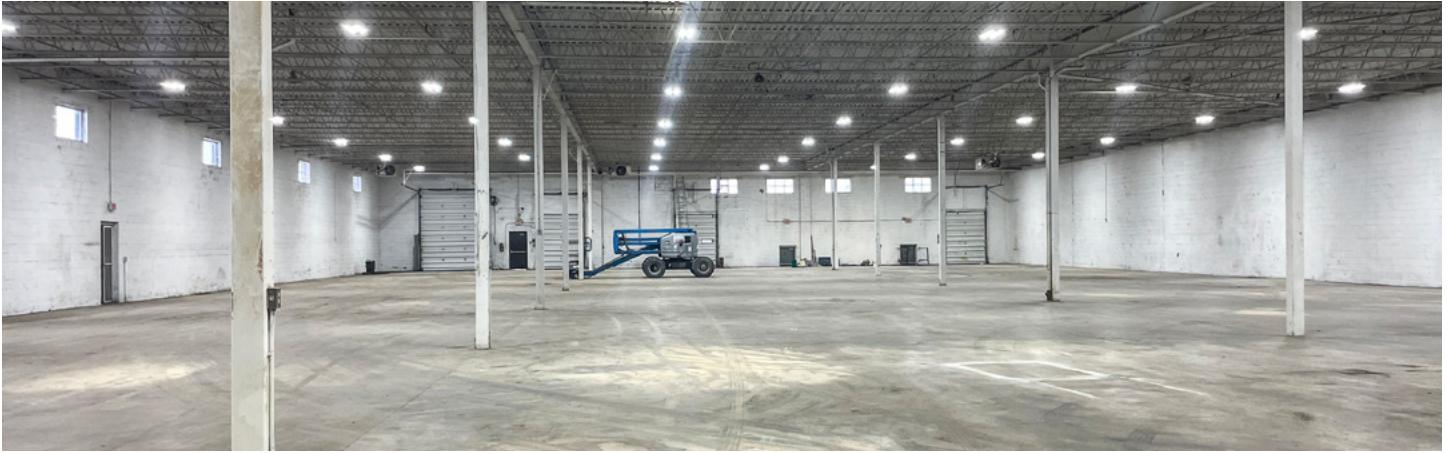
## COMMENTS

- Ideal proportion of office and warehouse space.
- Good office layout with large front reception / showroom area, a large lunchroom, and an office.
- Very functional warehouse space.
- Prominent location in close proximity to various amenities, public transit, Highway 427, 410 & 407 and minutes to Toronto Pearson Airport.





# Photos



# Property Zoning - E2

## PERMITTED USES

---

### OFFICE

- ◆ Medical Office
- ◆ Office

### BUSINESS ACTIVITIES

- ◆ Broadcasting / Communications Facility
- ◆ Manufacturing Facility
- ◆ Science and Technology Facility
- ◆ Truck Terminal
- ◆ Warehouse/Distribution Facility
- ◆ Wholesaling Facility
- ◆ Waste Processing Station (1)
- ◆ Waste Transfer Station (1)
- ◆ Composting Facility (1)
- ◆ Self Storage Facility
- ◆ Contractor Service Shop
- ◆ Medicinal Product
- ◆ Manufacturing Facility (0055-2015) (14)
- ◆ Medicinal Product Manufacturing Facility - Restricted (0055-2015)

### COMMERCIAL

- ◆ Restaurant (1)
- ◆ Convenience Restaurant (0018-2015) (1)(13)

- ◆ Take-out Restaurant (1)

- ◆ Commercial School

- ◆ Financial Institution (0191-2009), (0018-2015)(12)

- ◆ Veterinary Clinic

- ◆ Animal Care Establishment

### MOTOR VEHICLE SERVICE

- ◆ Motor Vehicle Repair Facility - Restricted
- ◆ Motor Vehicle Rental Facility
- ◆ Motor Vehicle Wash Facility - Restricted
- ◆ Gas Bar (0018-2015) (1)(2)(13)
- ◆ Motor Vehicle Service Station (0018-2015) (13)
- ◆ Motor Vehicle Sales, Leasing and/or Rental Facility - Commercial Motor Vehicles (1)

### HOSPITALITY

- ◆ Banquet Hall/Conference
- ◆ Centre/Convention Centre
- ◆ Night Club (1)(3)
- ◆ Overnight Accommodation

### OTHER

- ◆ Adult Video Store (1)

- ◆ Adult Entertainment Establishment (1)

- ◆ Animal Boarding Establishment (1)

- ◆ Active Recreational Use

- ◆ Body-Rub Establishment (1)

- ◆ Beverage/Food Preparation Establishment

- ◆ Truck Fuel Dispensing Facility (0297-2013)

- ◆ Entertainment Establishment

- ◆ Recreational Establishment

- ◆ Funeral Establishment (4)

- ◆ Private Club

- ◆ Repair Establishment

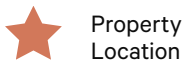
- ◆ Parking Lot

- ◆ University/College

- ◆ Courier/Messenger Service



# Amenities



Property Location

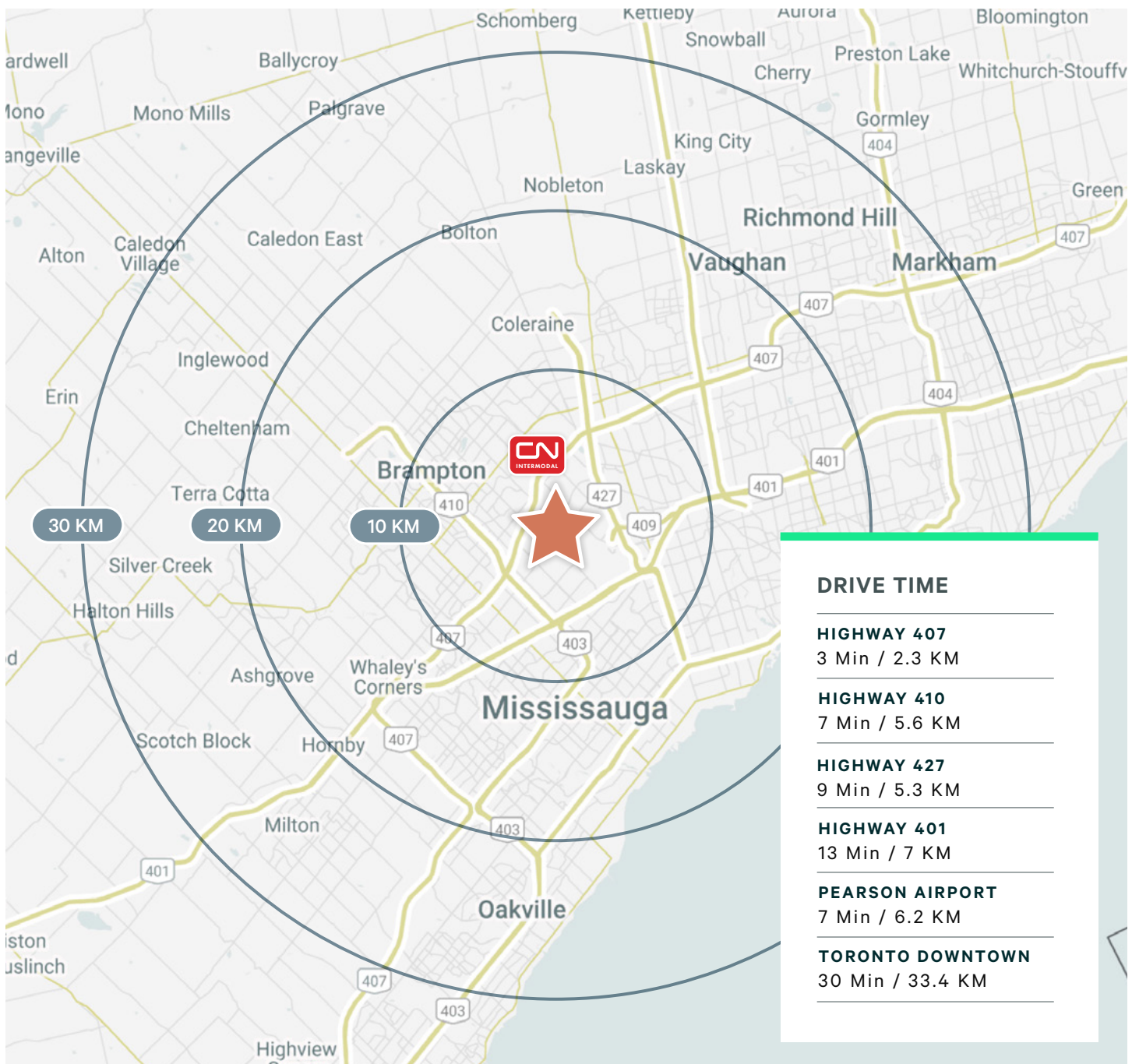
MiWay #15 - Drew Road

MiWay #42 - Derry Road

# Location & Demographics†

	10 KM	20 KM	30 KM
POPULATION	725,880	2,928,597	5,029,867
LABOUR FORCE	65.5%	66.9%	67.5%
MEDIAN AGE	37.7	38.8	39.0

†Estimates for 2023







# For Lease

---

## 2390 Drew Road Unit 1, Mississauga

---

### Contact Us

**Phillip Cheung\***  
Executive Vice President  
416 798 6243  
phillip.cheung@cbre.com

**Carley Williamson**  
Sales Representative  
416 798 6276  
carley.williamson@cbre.com

**Evan S. White\***  
Vice Chairman  
416 798 6232  
evan.white@cbre.com

**CBRE**  
\*Sales Representative

**CBRE Limited, Real Estate Brokerage | Toronto West | 5935 Airport Road, Suite 700, Mississauga, ON L4V 1W5**

This disclaimer shall apply to CBRE Limited, Real Estate Brokerage, and to all other divisions of the Corporation; to include all employees and independent contractors ("CBRE"). The information set out herein, including, without limitation, any projections, images, opinions, assumptions and estimates obtained from third parties (the "Information") has not been verified by CBRE, and CBRE does not represent, warrant or guarantee the accuracy, correctness and completeness of the Information. CBRE does not accept or assume any responsibility or liability, direct or consequential, for the Information or the recipient's reliance upon the Information. The recipient of the Information should take such steps as the recipient may deem necessary to verify the Information prior to placing any reliance upon the Information. The Information may change and any property described in the Information may be withdrawn from the market at any time without notice or obligation to the recipient from CBRE. CBRE and the CBRE logo are the service marks of CBRE Limited and/or its affiliated or related companies in other countries. All other marks displayed on this document are the property of their respective owners. All Rights Reserved. Mapping Sources: Canadian Mapping Services canadamapping@cbre.com; DMTI Spatial, Environics Analytics, Microsoft Bing, Google Earth.