



For Lease: Office

595

Adelaide Street E

Full Building Opportunity of 19,500 SF or
divisible by full floor(s)

Lennard:

Here is where your business will *grow*.

lennard.com



595 Adelaide Street E

Creative brick and beam space available for lease at the corner of Parliament St. and Adelaide St E in Downtown Toronto.



Available Space

1st Floor: 4,715 SF

2nd Floor: 4,715 SF

3rd Floor: 5,035 SF

4th Floor: 5,035 SF

Total: 19,500 SF

(1st and 2nd floors connected by internal staircase)



Gross Rent

\$42.50 PSF

Plus Hydro & Janitorial



Term

Until November 30, 2028

(or Flexible)



Availability

Immediate



Listing Agent

Joseph Wise*

Senior Vice President

416.649.5909

jwise@lennard.com

*Sales Representative

View the Virtual Tour!

[1st & 2nd Floor - Click here](#)

[3rd Floor - Click here](#)

[4th Floor - Click here](#)

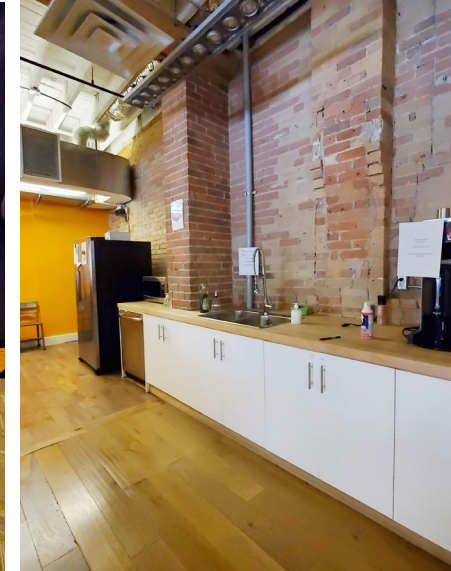
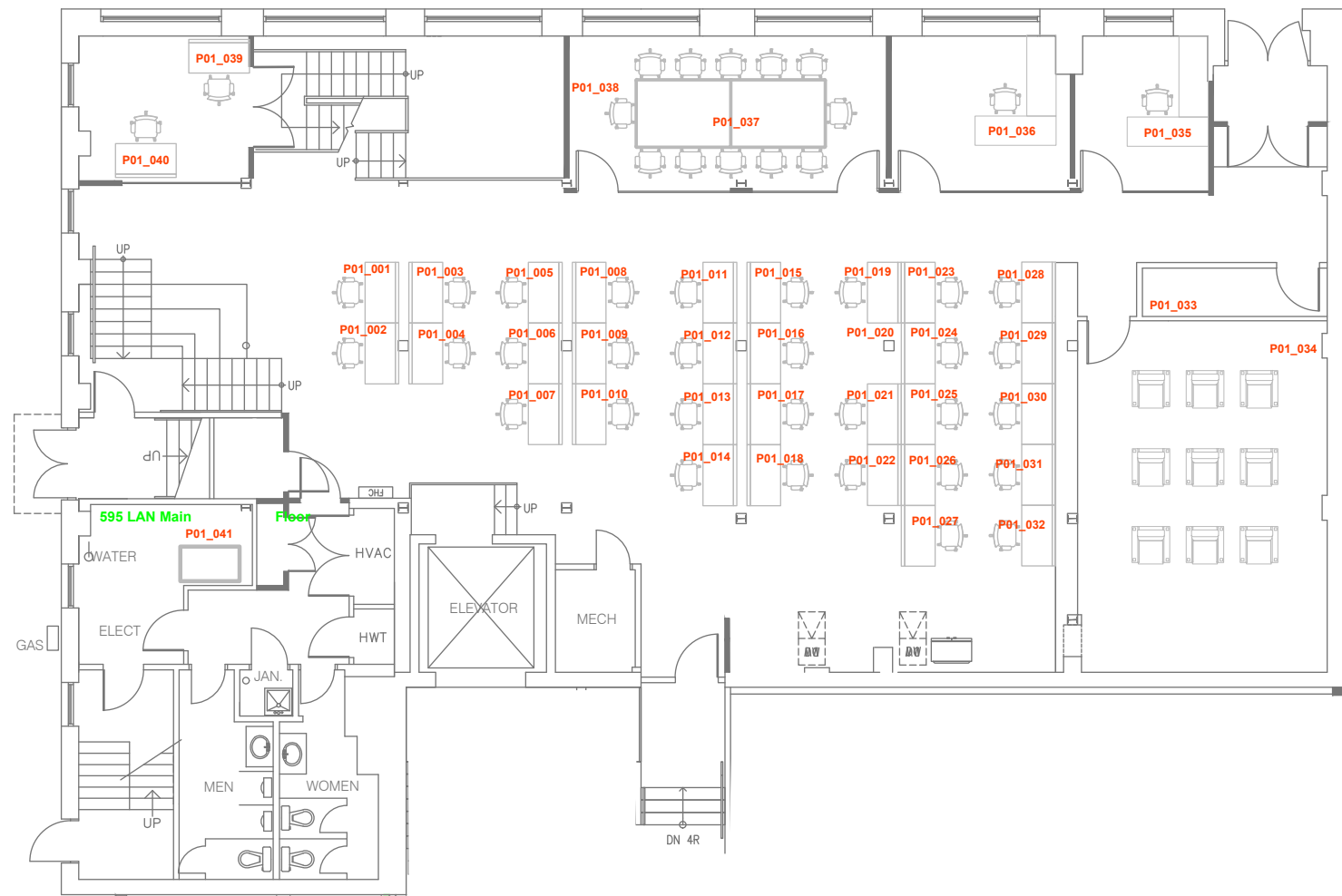
Property Highlights

- Full building with potential branding opportunity, or divisible by floor
- 1st and 2nd floors connected by staircase; 2nd floor has private gym
- Creative spaces with excellent natural light; primarily open concept with meeting spaces
- Additional spaces available in neighbouring building – please inquire for flyer

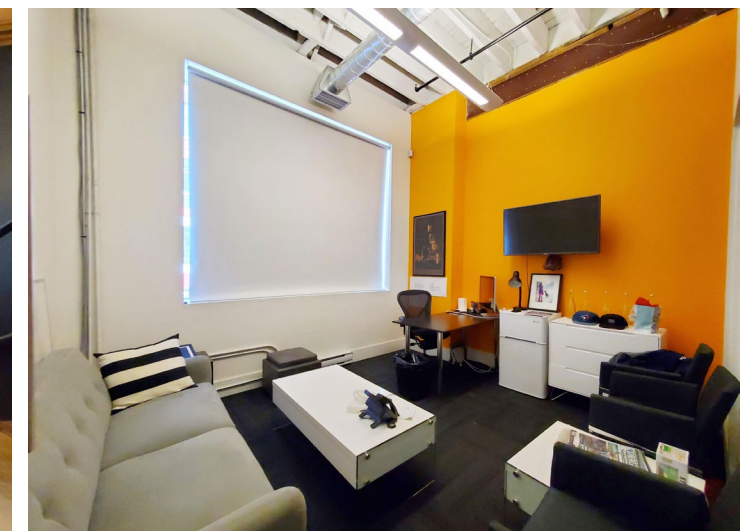
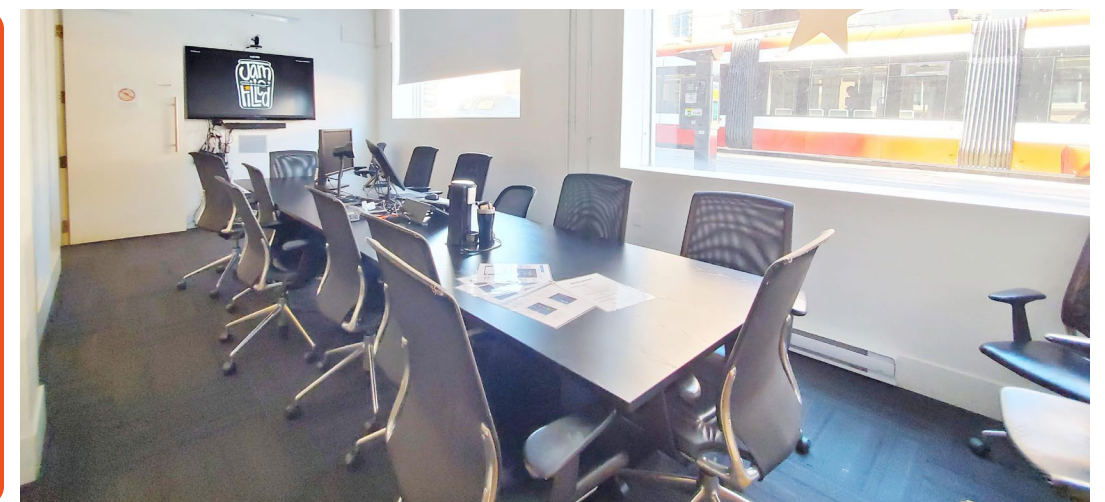


595 Adelaide Street E: 1st Floor

Floor Plan



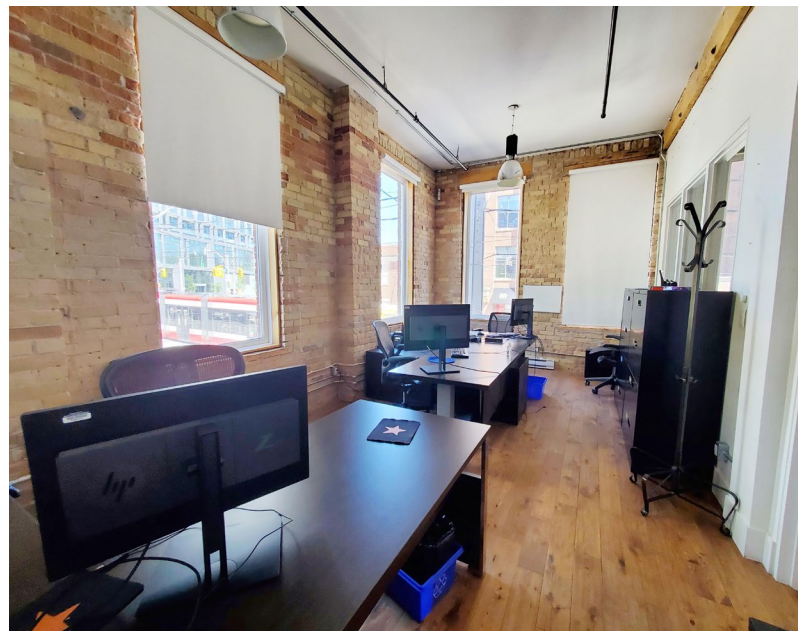
[Click here for Virtual Tour: 1st & 2nd Floor](#)



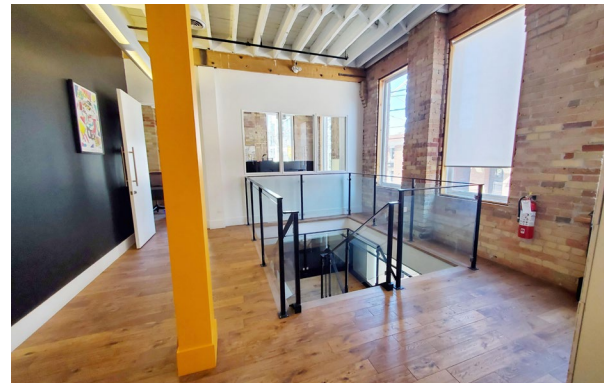
595 Adelaide Street E: 2nd Floor



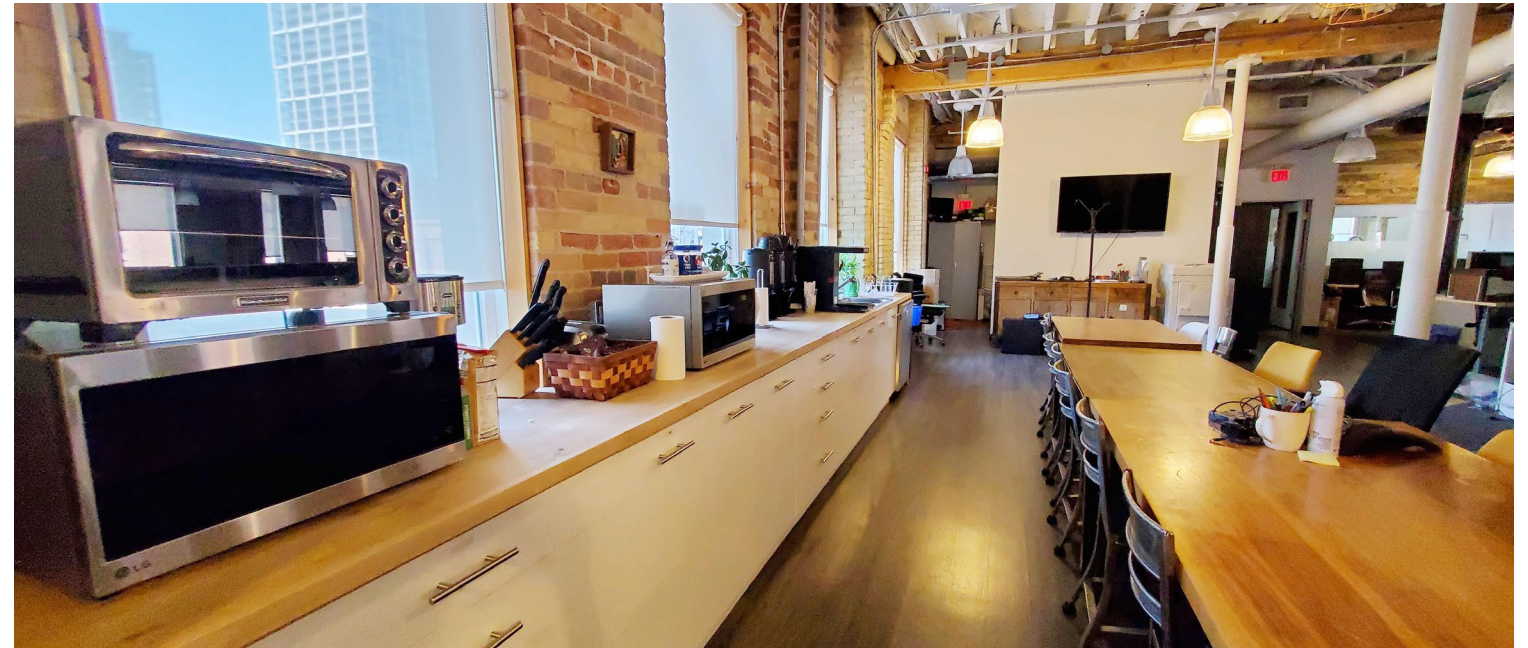
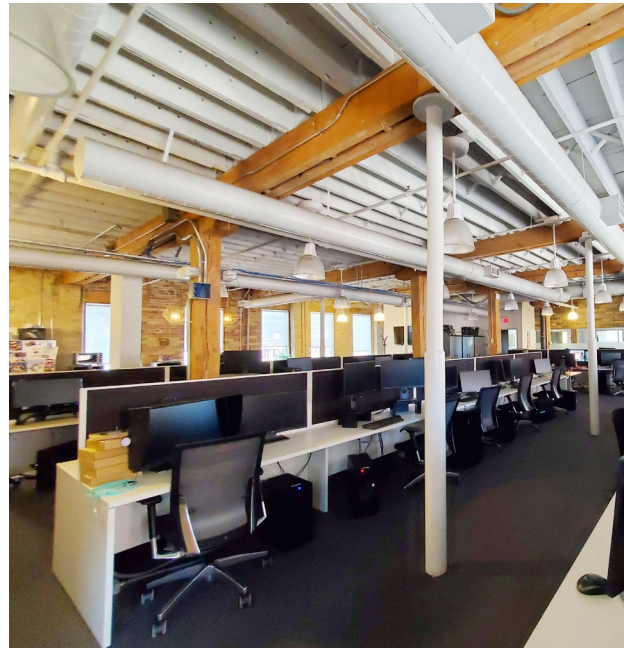
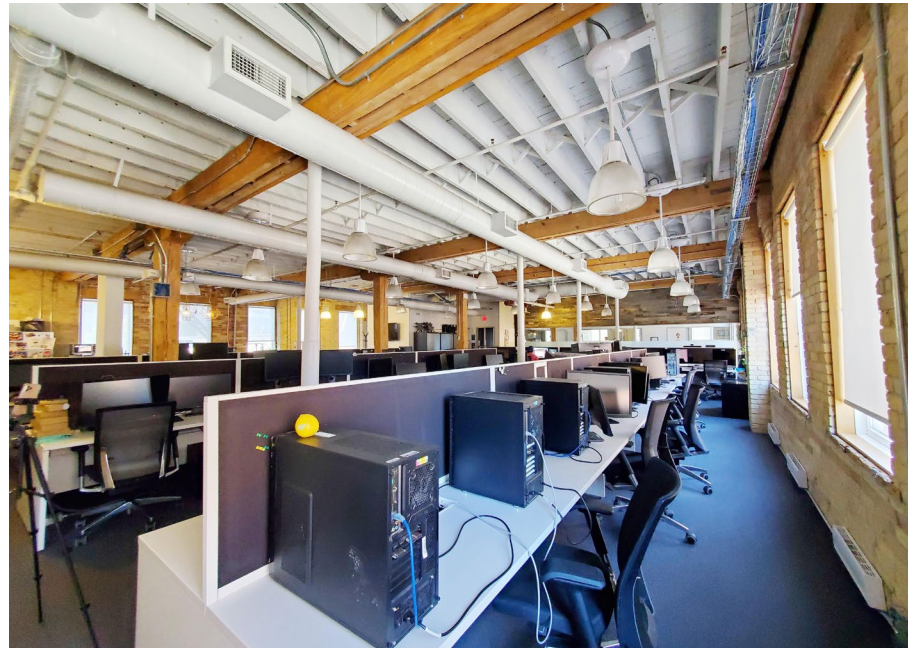
Floor Plan



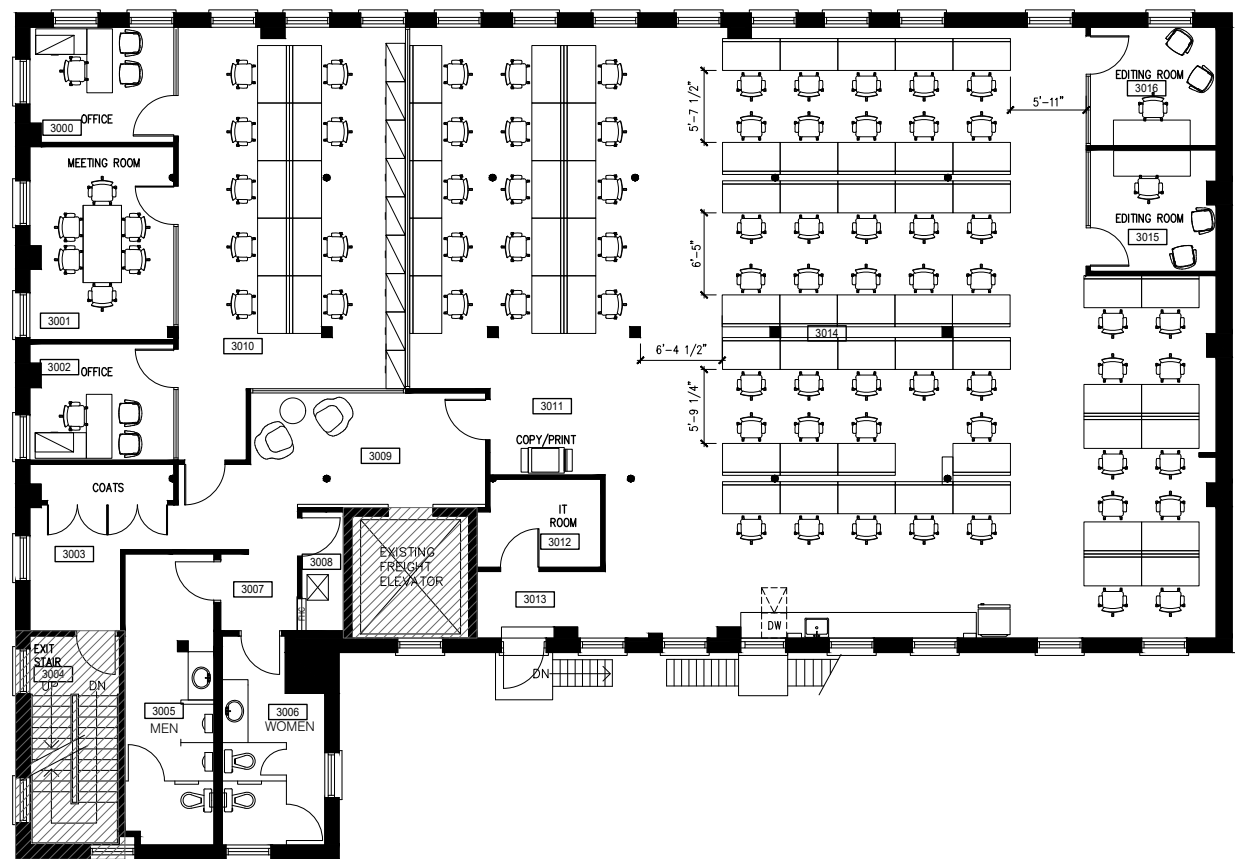
[Click here for Virtual Tour:
1st & 2nd Floor](#)



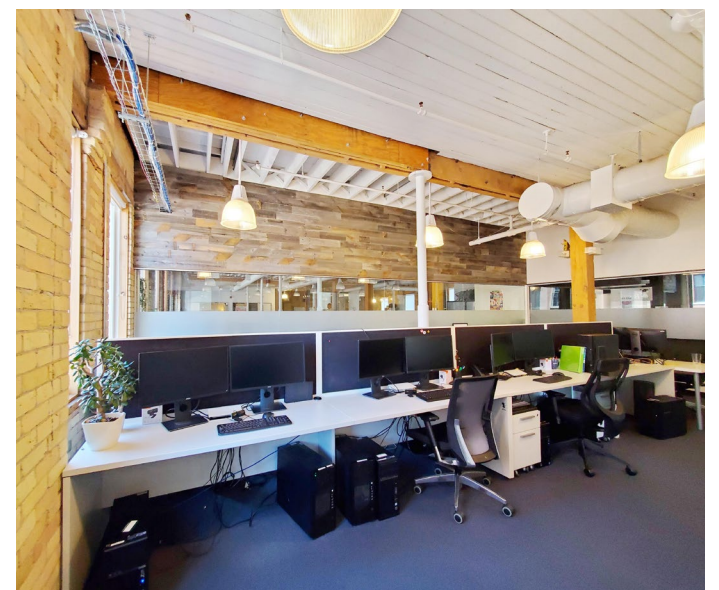
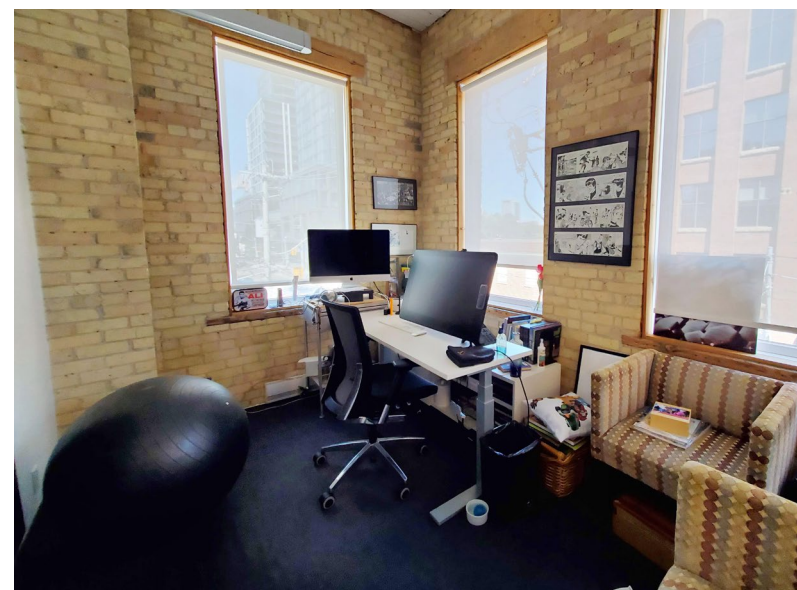
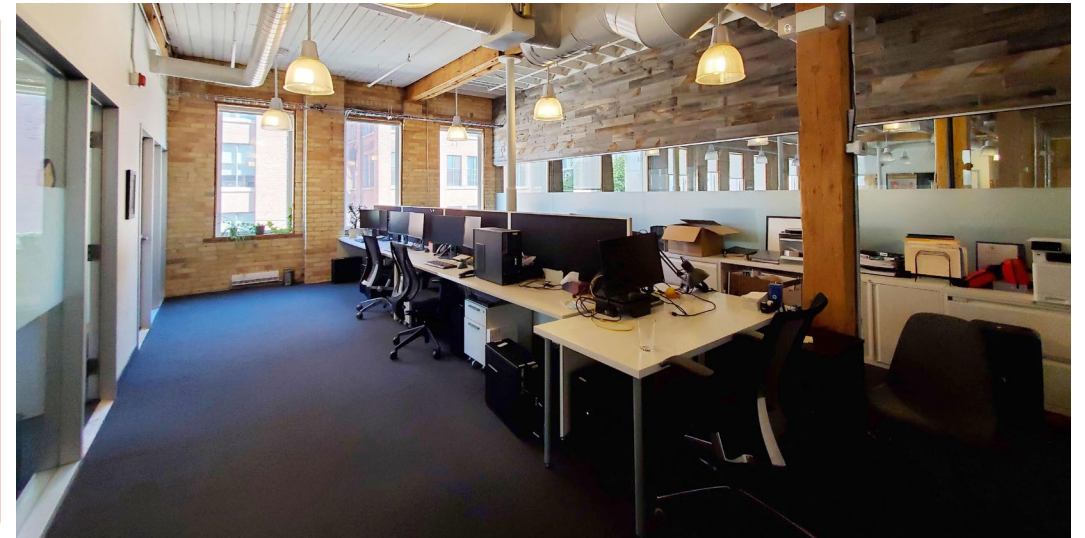
595 Adelaide Street E: 3rd Floor



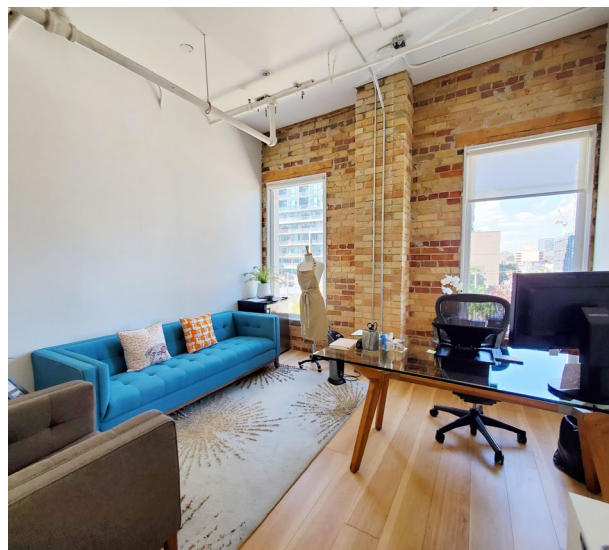
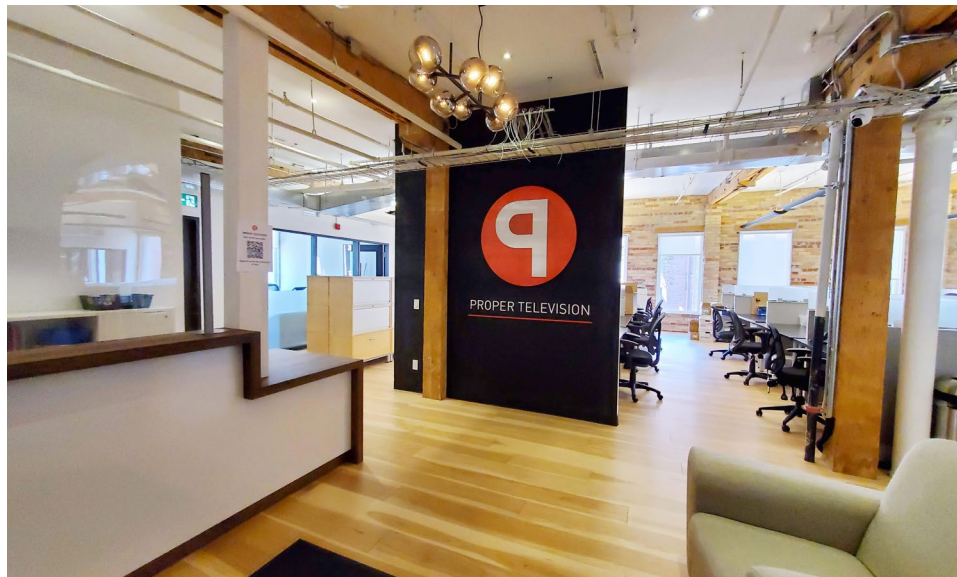
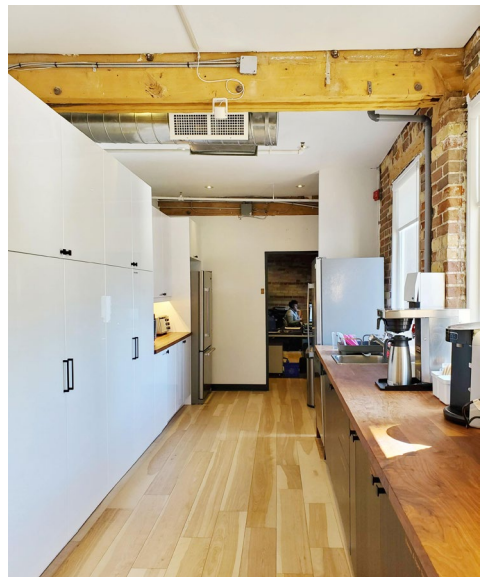
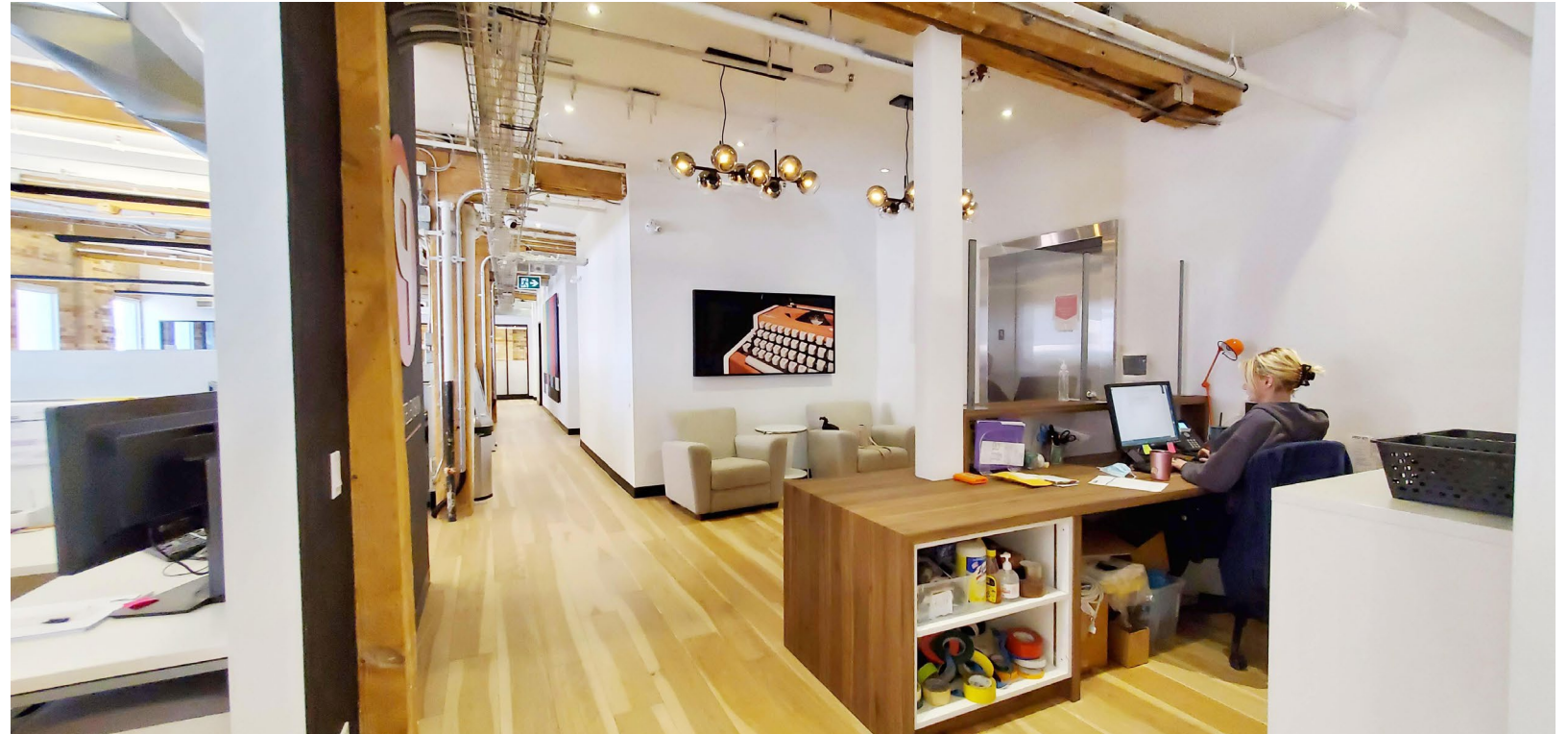
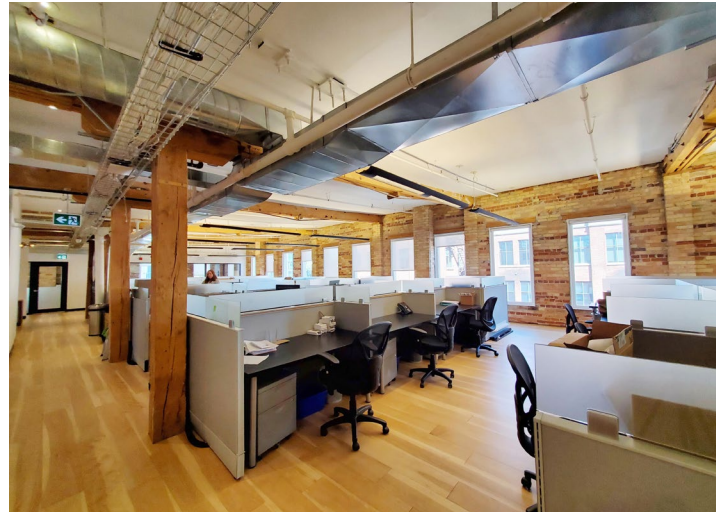
Floor Plan



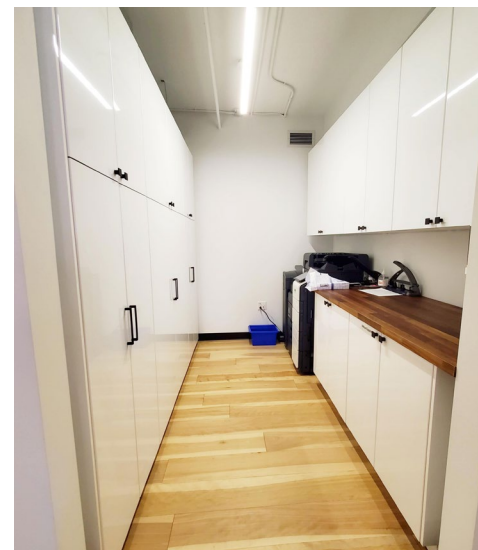
[Click here for Virtual Tour: 3rd Floor](#)



595 Adelaide Street E: 4th Floor



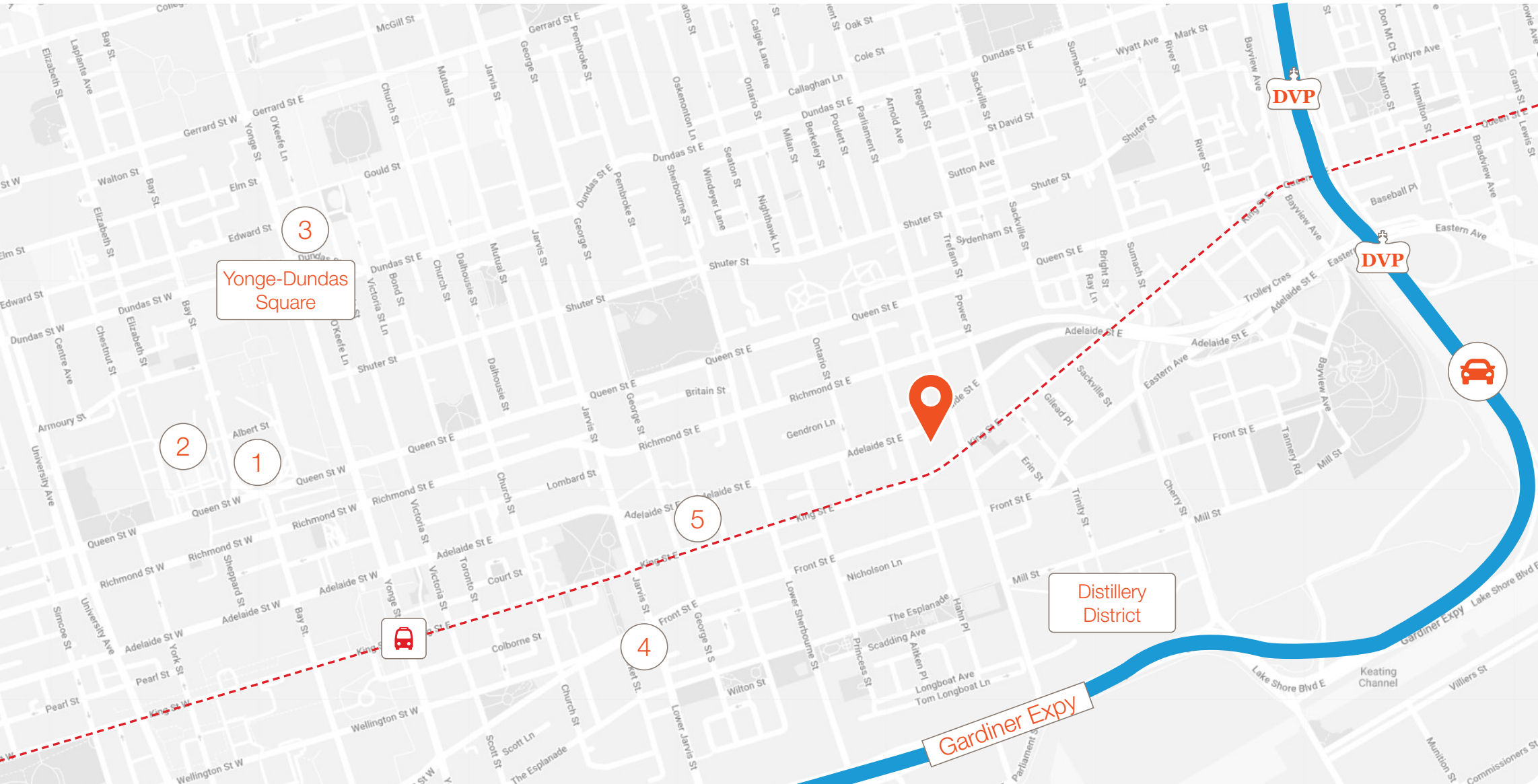
[Click here for Virtual Tour: 4th Floor](#)



Floor Plan



595 Adelaide Street E



 To Don Valley Parkway **2 Mins** • **1.5 km**

Distillery District **3 Mins** • **750 m**

Yonge-Dundas Square **8 Mins** • **1.8 km**

 King Subway Station (TTC Line 1) **7 Mins** • **1.3 km**

----- King Street Car Line (service every 5 minutes)

1 Toronto Old City Hall

2 Nathan Phillips Square

3 Toronto Metropolitan University

4 St. Lawrence Market

5 George Brown College

 595 Adelaide Street E



Lennard:

A modern office space featuring a prominent wall of yellow and orange bricks. A white desk with a black office chair is positioned against the brick wall. A black telephone and a laptop are on the desk. In the foreground, a bright yellow armchair is visible. The ceiling has exposed white pipes and a recessed light fixture.

Lennard:

Joseph Wise*, Senior Vice President
416.649.5909
jwise@lennard.com

200-55 University Avenue, Toronto
416.649.5920
lennard.com

*Sales Representative **Broker

Statements and information contained are based on the information furnished by principals and sources which we deem reliable but for which we can assume no responsibility. Lennard Commercial Realty, Brokerage.