

30 Adelaide St. East



145 King Street West, Suite 1100 | Toronto, ON M5H 1J8 | +1 416 362 2244 | www.cbre.ca

This disclaimer shall apply to CBRE Limited, Real Estate Brokerage, and to all other divisions of the Corporation; to include all employees and independent contractors ("CBRE"). The information set out herein, including, without limitation, any projections, images, opinions, assumptions and estimates obtained from third parties (the "Information") has not been verified by CBRE, and CBRE does not represent, warrant or guarantee the accuracy, correctness and completeness of the Information. CBRE does not accept or assume any responsibility or liability, direct or consequential, for the Information or the recipient's reliance upon the Information. The recipient of the Information should take such steps as the recipient may deem necessary to verify the Information prior to placing any reliance upon the Information. The Information may change and any property described in the Information may be withdrawn from the market at any time without notice or obligation to the recipient from CBRE. CBRE and the CBRE logo are the service marks of CBRE Limited and/or its affiliated or related companies in other countries. All other marks displayed on this document are the property of their respective owners. All Rights Reserved.

Leasing Opportunities

Suite	SF	Availability	Notes
Suite 501	12,879	LEASED	Very nicely finished premises to an open concept with lots of natural light.
Suite 700	26,108	May 1, 2024	Full floor office opportunity - efficient floor, largely open concept with a mix of offices and meeting rooms.
Suite 800-A	13,053	LEASED	Turnkey office opportunity. Fitted with modern furniture that includes sit-stand workstations and chairs. The full floor of 26,200-SF turnkey space can also be made available upon request.

Located on the eastern edge of Toronto's bustling financial core, this Class A building received NAIOP'S Office Project of the Year in 2001 after a complete interior and exterior renovation. The modern architecture beauty stands out among the skyline with blue-tinted paned windows which surrounds a beautifully landscaped courtyard. Easily accessible by transit, walking, bicycle, or car, 30 Adelaide's onsite amenities include 24/7 security, underground parking, a coffee shop, and restaurant with numerous nearby conveniences including the PATH system, restaurants, hotels, gyms, shopping, and cafes.

Sustainability & Certifications



BOMA Best Certified Gold

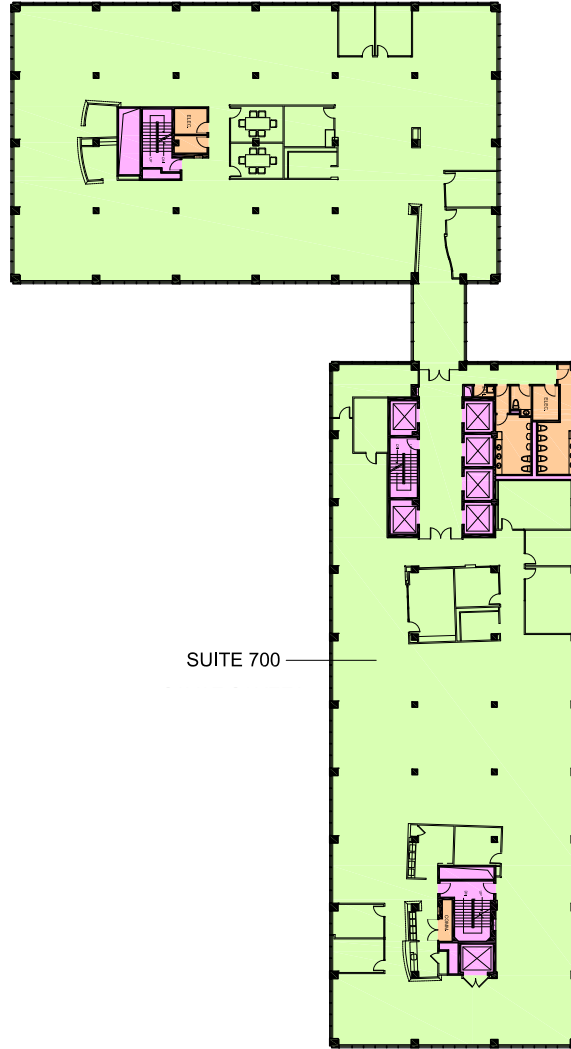


WELL Health and Safety Rated 2021

Building specs

Size	419,286 SF
Year built	1957
Number of floors	18
Operating costs	\$20.17 (PSF/YR)
Realty tax	\$9.06 (PSF/YR)
Total additional rent	\$29.23 (PSF/YR)

Floorplan | Suite 700



Best in class proximity



Nearby

- 1 CF Toronto Eaton Centre
- 2 Fairmont Royal York
- 3 Shangri-La
- 4 Scotiabank
- 5 St. Lawrence Market
- 6 Meridian Hall
- 7 Ryerson University
- 8 City Hall
- 9 The St. Regis
- 10 Dynamic Funds Tower – Closest PATH entrance
- 11 Adelaide Club
- 12 Cambridge Club
- 13 Equinox
- 14 Cosmopolitan Executive Hotel
- 15 St James Park

40 min. Pearson International via UP Express

12 min. Drive to Billy Bishop Airport

3 min. Walk to Queen

98 Walk Score

100 Transit Score

93 Bike Score

Onsite Amenities

- Timothy's Coffee
- Pumpernickel's
- Convenience store
- Sansotei Ramen
- PATH Connected

CBRE

Byron Ahmet

Executive Vice President

416.815.2354

Byron.ahmet@cbre.com

Jeff Friedman

Vice Chairman

416.815.2363

Jeff.friedman@cbre.com

Brian Porter

Senior Vice President

416.847.3242

Brian.porter@cbre.com

Kirk Baylis

Sales Representative

647.923.9243

Kirk.baylis@cbre.com

dream 

Corrine Dorazio

Vice President, Leasing

416.365.4196

CDorazio@dream.ca

Jason Cowie

Director, Leasing

437.237.3454

JCowie@dream.ca

dream.ca/office